

STOCKCAP®

vinyl • rubber • plastic

**ORDER
ONLINE**

WWW.STOCKCAP.COM



vinyl



rubber



plastic

The World Leader In Product Protection

StockCap is the foundation of the Sinclair & Rush Company. We started with a small line of caps and plugs and have grown to become the largest manufacturer of flexible closures in the world. In addition to a large selection of stock products, our fifty plus years of experience in molding offers new and unique solutions to your product protection problems.

The ultimate challenge for StockCap is to provide customers with the most efficient and effective means to protect their products. This can be quite a demanding endeavor when serving such a wide variety of industries, yet StockCap offers multiple manufacturing processes so that the best match can be made for each and every need. Experienced Sales Representatives address each product protection problem individually, and the customer is directed to the most suitable material, size and shape. Product protection is our business and with dip molding, injection molding, and compression molding capabilities, StockCap is your single source for vinyl, rubber and plastic components.



As the largest manufacturer of product protection in the world, StockCap is proud to offer more stock sizes, color choices and material formulations than anyone else in the industry.



Our U.S. manufacturing facility in Arnold, MO, certified ISO 14001 and ISO 9001, utilizes the industry's most innovative, custom designed, high-speed molding machines.

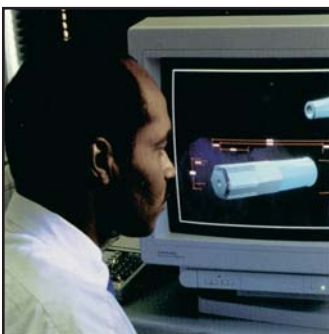




In-house material development lab aids our chemists in creating new materials for the ever-changing needs of our customers.



Prototype lab lowers tooling development costs while giving us greater control over the quality of our molds.



Our experienced engineering staff utilizes Pro-Engineer™ software to create and modify complex parts quickly and cost effectively.

Table of Contents

Caps

- 4 Short Caps
- 6 Long Caps
- 8 Rectangular Caps
- 10 Square Caps
- 11 Anti-roll Caps
- 12 EZ Tab Caps
- 13 Grab Tab Caps
- 14 Hanger Caps & Tips
- 15 Angle Caps
- 16 Vented Caps
- 17 End Caps
- 18 Tear Caps
- 19 Threaded Caps
- 20 Heat Shrink Caps
- 21 Electrical Connector Caps

Plugs

- 22 Electrical Connector Plugs
- 23 Threaded Plugs
- 24 Side Pull Plugs
- 25 Vinyl Plus Plugs
- 26 Tapered Plugs
- 28 Tubing Inserts
- 30 Rubber Seal Plugs with tabs
- 31 Rubber Seal Plugs

Other Protection Products

- 32 Snap Ring Flange Covers
- 34 ASA Flange Covers
- 35 Flange Covers
- 36 Hose Guards
- 37 Net Guard

Hi-Temp Application Products

- 38 About the Finishing Process
- 39 Finishing Materials and Applications
- 40 EPDM Caps
- 41 Silicone Caps
- 42 EPDM Tapered Plugs
- 43 Silicone Tapered Plugs
- 44 EPDM Pull Plugs
- 45 Silicone Pull Plugs
- 46 Silicone Flangeless Plugs
- 47 Silicone Flange Plugs
- 48 Silicone Washer Plugs
- 49 Tapes
- 50 Discs
- 51 Film & Die Cuts
- 52 Silicone Tubing and Sleeves
- 53 Other Tubing
- 54 Other Caps & Plugs

General Information

- 56 Material Formulations
- 58 About the Manufacturing Processes
- 60 Custom & Finishing
- 62 Family of Companies
- 63 Ordering Information

Short Caps

Flexible Short Caps can be applied quickly and easily. No matter the application, they fit snugly without cracking or splitting. Short Caps possess excellent insulation qualities and resist weather, moisture and chemicals. Many sizes are stocked in our standard material, but these caps are also available in high-temperature resistant material withstanding temperatures up to 446° F (230° C) for extended periods without breaking down.



Product Features

- Thousands of sizes
- Large selection of colors

Applications

- Thread protectors
- Finishing masks
- Insulators
- Decorators
- Seals
- Color coding



Short Caps For caps with longer lengths see pages 6 and 7.

Inside Diameter "A"		Maximum Inside Length "B"		Nominal Wall Thickness "C"	
Inches	mm	Inches	mm	Inches	mm
		± .062	± 1.57	± .010	± .25
0.062	1.57	0.750	19.05	0.028	0.71
0.080	2.03	0.750	19.05	0.028	0.71
0.093	2.36	0.750	19.05	0.028	0.71
0.112	2.85	1.000	25.40	0.030	0.76
0.125	3.18	1.500	38.10	0.033	0.84
0.137	3.48	1.500	38.10	0.033	0.84
0.142	3.61	1.500	38.10	0.033	0.84
0.151	3.84	1.500	38.10	0.038	0.97
0.156	3.96	1.500	38.10	0.038	0.97
0.172	4.37	1.500	38.10	0.038	0.97
0.187	4.75	1.500	38.10	0.038	0.97
0.207	5.26	1.500	38.10	0.038	0.97
0.219	5.56	1.500	38.10	0.038	0.97
0.234	5.94	1.500	38.10	0.038	0.97
0.240	6.10	1.500	38.10	0.038	0.97
0.250	6.35	1.500	38.10	0.042	1.07
0.281	7.14	1.500	38.10	0.042	1.07
0.313	7.95	1.500	50.80	0.042	1.07
0.331	8.41	1.500	38.10	0.042	1.07
0.343	8.71	2.500	63.50	0.042	1.07
0.375	9.53	1.500	38.10	0.042	1.07
0.406	10.31	2.500	63.50	0.055	1.40
0.420	10.67	1.500	38.10	0.055	1.40
0.437	11.10	1.500	38.10	0.055	1.40
0.446	11.33	1.500	38.10	0.055	1.40
0.468	11.89	2.500	63.50	0.055	1.40
0.500	12.70	1.500	38.10	0.055	1.40
0.531	13.49	2.500	63.50	0.060	1.52
0.562	14.28	1.500	38.10	0.060	1.52
0.625	15.88	1.500	38.10	0.060	1.52
0.687	17.45	1.500	38.10	0.060	1.52
0.730	18.54	1.500	38.10	0.060	1.52
0.750	19.05	1.500	38.10	0.060	1.52
0.812	20.63	1.500	38.10	0.060	1.52
0.843	21.41	1.500	38.10	0.060	1.52
0.875	22.23	1.500	38.10	0.060	1.52
0.937	23.80	1.500	38.10	0.060	1.52
0.950	24.13	1.500	38.10	0.060	1.52
1.000	25.40	1.500	38.10	0.060	1.52
1.062	26.98	1.500	38.10	0.065	1.65
1.125	28.58	1.500	38.10	0.065	1.65
1.187	30.15	1.500	38.10	0.065	1.65
1.250	31.75	1.500	38.10	0.065	1.65
1.313	33.35	2.000	50.80	0.065	1.65
1.375	34.93	1.500	38.10	0.065	1.65
1.500	38.10	1.500	38.10	0.065	1.65
1.625	41.28	1.500	38.10	0.065	1.65
1.687	42.85	1.500	38.10	0.065	1.65
1.750	44.45	1.500	38.10	0.065	1.65
1.875	47.63	2.000	50.80	0.065	1.65
2.000	50.80	1.500	38.10	0.065	1.65
2.125	53.98	1.750	44.45	0.065	1.65
2.250	57.15	1.500	38.10	0.065	1.65
2.375	60.33	1.500	38.10	0.065	1.65
2.500	63.50	1.500	38.10	0.065	1.65
2.625	66.68	1.750	44.45	0.065	1.65
2.750	69.85	1.500	38.10	0.065	1.65
3.000	76.20	1.500	38.10	0.065	1.65
3.125	79.38	1.750	44.45	0.065	1.65
3.250	82.55	1.500	38.10	0.065	1.65
3.500	88.90	1.500	38.10	0.065	1.65
3.625	92.08	1.750	44.45	0.065	1.65
4.000	101.60	1.750	44.45	0.065	1.65
4.750	120.65	2.000	50.80	0.065	1.65

What you should know about the specs

Inside Diameter or ID (A):

The soft and flexible material of the Short Cap creates a very tight fit when you select a size that is slightly smaller than the diameter of the item you need to cap. For example, if your outside diameter is .500" (12.70 mm), use a .437" (11.10 mm) Short Cap.

Length (B):

The minimum length of any Short Cap is .187" (4.75 mm) with length increments of .062" (1.57mm) to create many sizes.

Inside length is measured along the side wall to the radius of the closed end, not down the center. Inside length tolerance is ± .062" (1.57 mm).

Wall Thickness (C):

"C" is measured .250" (6.35 mm) from the open end, increasing slightly toward the closed end. Wall tolerance is ± .010" (.25 mm).

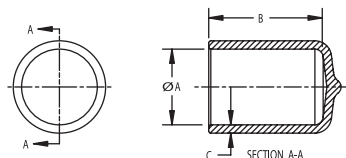
Colors:

Red or black parts are our standard stock colors. In addition, we have other standard colors including white, blue, green, orange, yellow and gray. For standard color options, see our materials chart on page 56. Other colors are available upon request.

Contact us for sizes not listed. For caps with longer lengths, see Long Caps on pages 6 and 7.

Wire Gauge Sizing Chart

Wire Gauge	Wire O.D. In Inches	Vinyl Cap I. D. In Inches
1	0.2830	0.281
2	0.2625	0.250
3	0.2437	0.234
4	0.2253	0.207
5	0.2070	0.187
6	0.1920	0.187
7	0.1770	0.172
8	0.1620	0.156
9	0.1483	0.137
10	0.1350	0.125
11	0.1205	0.112
12	0.1055	0.093
13	0.0915	0.080
14	0.0800	0.062
15	0.0720	0.062





Long Caps

Made of tough and flexible vinyl, Long Caps are available in lengths up to 24" long. These caps are ideal for covering long bolts or providing a clean finish to the end of a tube. Our double-dip process can be utilized to achieve two-color or dual durometer parts.



Product Features

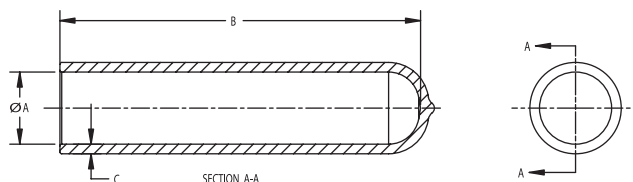
- Thousands of sizes
- Wide variety of color choices
- Available in high-temperature resistant material
- Can be imprinted, punched, or sliced to meet your specifications

Applications

- Thread protectors
- Finishing masks
- Insulators

Long Caps - Round End

Inside Diameter "A"		Maximum Inside Length "B"		Nominal Wall Thickness "C"			
Inches	mm	Inches	mm	At Shorter Length		At Longer Length	
				Inches	mm	Inches	mm
± .062	± 1.57	± .010	± 0.25	± .010	± 0.25	± .010	± 0.25
0.165	4.19	3.500	88.90	0.055	1.40	0.055	1.40
0.187	4.75	3.500	88.90	0.055	1.40	0.055	1.40
0.250	6.35	4.250	107.95	0.060	1.52	0.065	1.65
0.305	7.75	7.000	177.80	0.060	1.52	0.065	1.65
0.313	7.95	6.250	158.75	0.060	1.52	0.065	1.65
0.375	9.53	7.000	177.80	0.065	1.65	0.075	1.91
0.437	11.10	5.250	133.35	0.065	1.65	0.075	1.91
0.500	12.70	5.250	133.35	0.065	1.65	0.075	1.91
0.562	14.27	5.250	133.35	0.065	1.65	0.075	1.91
0.600	15.24	5.000	127.00	0.065	1.65	0.075	1.91
0.625	15.88	11.000	279.40	0.065	1.65	0.075	1.91
0.687	17.45	5.250	133.35	0.065	1.65	0.075	1.91
0.750	19.05	11.000	279.40	0.065	1.65	0.075	1.91
0.812	20.63	8.500	215.90	0.070	1.78	0.080	2.03
0.843	21.41	10.500	266.70	0.070	1.78	0.080	2.03
0.875	22.23	8.500	215.90	0.070	1.78	0.080	2.03
0.937	23.80	11.000	279.40	0.070	1.78	0.080	2.03
1.000	25.40	8.500	215.90	0.070	1.78	0.080	2.03
1.062	26.97	5.250	133.35	0.070	1.78	0.080	2.03
1.125	28.58	5.250	133.35	0.070	1.78	0.080	2.03
1.250	31.75	5.250	133.35	0.070	1.78	0.080	2.03
1.500	38.10	5.250	133.35	0.070	1.78	0.080	2.03
1.625	41.28	5.250	133.35	0.070	1.78	0.080	2.03



Long Caps - Flat End

Inside Diameter "A"		Maximum Inside Length "B"		Nominal Wall Thickness "C"			
				At Shorter Length		At Longer Length	
Inches	mm	Inches	mm	Inches	mm	Inches	mm
		± .062	± 1.57	± .010	± 0.25	± .010	± 0.25
0.207	5.26	3.500	88.90	0.055	1.40	0.055	1.40
0.281	7.14	5.000	127.00	0.060	1.52	0.060	1.52
0.313	7.95	6.000	152.40	0.060	1.52	0.065	1.65
0.375	9.53	6.000	152.40	0.065	1.65	0.075	1.91
0.437	11.10	4.000	101.60	0.065	1.65	0.075	1.91
0.500	12.70	8.500	215.90	0.065	1.65	0.075	1.91
0.562	14.28	6.000	152.40	0.065	1.65	0.075	1.91
0.610	15.50	6.750	171.45	0.065	1.65	0.075	1.91
0.625	15.88	6.000	152.40	0.065	1.65	0.075	1.91
0.687	17.45	6.000	152.40	0.065	1.65	0.075	1.91
0.725	18.42	24.000	609.60	0.065	1.65	0.075	1.91
0.730	18.54	6.000	152.40	0.065	1.65	0.075	1.91
0.750	19.05	6.000	152.40	0.065	1.65	0.075	1.91
0.812	20.63	6.000	152.40	0.070	1.78	0.080	2.03
0.830	21.08	6.000	152.40	0.070	1.78	0.080	2.03
0.843	21.41	6.000	152.40	0.070	1.78	0.080	2.03
0.875	22.23	24.000	609.60	0.070	1.78	0.080	2.03
0.921	23.39	24.000	609.60	0.070	1.78	0.080	2.03
0.937	23.80	24.000	609.60	0.070	1.78	0.080	2.03
0.950	24.13	6.000	152.40	0.070	1.78	0.080	2.03
1.000	25.40	24.000	609.60	0.070	1.78	0.080	2.03
1.062	26.98	6.000	152.40	0.070	1.78	0.080	2.03
1.125	28.58	24.000	609.60	0.070	1.78	0.080	2.03
1.187	30.15	6.000	152.40	0.070	1.78	0.080	2.03
1.220	30.99	10.000	254.00	0.070	1.78	0.080	2.03
1.250	31.75	6.000	152.40	0.070	1.78	0.080	2.03
1.375	34.93	6.000	152.40	0.070	1.78	0.080	2.03
1.500	38.10	6.000	152.40	0.070	1.78	0.080	2.03
1.625	41.28	6.000	152.40	0.070	1.78	0.080	2.03
1.687	42.84	6.000	152.40	0.070	1.78	0.080	2.03
1.750	44.45	6.000	152.40	0.070	1.78	0.080	2.03
2.000	50.80	6.000	152.40	0.070	1.78	0.080	2.03
2.250	57.15	6.000	152.40	0.070	1.78	0.080	2.03
2.500	63.50	6.000	152.40	0.070	1.78	0.080	2.03
2.750	69.85	6.000	152.40	0.070	1.78	0.080	2.03
3.000	76.20	6.000	152.40	0.070	1.78	0.080	2.03
3.250	82.55	6.000	152.40	0.070	1.78	0.080	2.03
3.500	88.90	6.000	152.40	0.070	1.78	0.080	2.03

What you should know about the specs

Inside Diameter or ID (A):

The soft and flexible material creates a very tight fit when you select a cap that is slightly smaller than the diameter of the item you need to cap. For example, if the outside diameter is .500" (12.70 mm), use a .437" (11.10 mm) cap.

This rule may vary for the longer length caps. In some cases the inside diameter of the Long Cap should match the outside diameter of the part. E.g., if the outside diameter is .625" (15.88mm), use a .625" (15.88mm) inside diameter Long Cap. If uncertain which diameter will work best for your part, please call for assistance and/or samples.

Length (B):

Long Caps increment by .062" (1.57mm) and are available in lengths up to the maximum shown on this chart.

The Round End Long Cap inside length is measured to the center of the closed end.

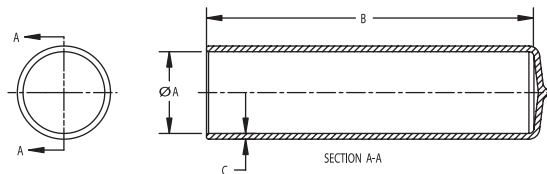
The Flat End Long Cap inside length is measured to the inside radius of the closed end. (See drawing for clarification.)

Inside length tolerance is ± .062" (1.57 mm) for both end styles.

Wall Thickness (C):

"C" is measured .250" (6.35 mm) from the open end, increasing slightly toward the closed end. For these longer caps, the wall thickness tapers slightly heavier to the closed end. Upon request, this can be adjusted to meet your specifications. Wall tolerance is ± .010" (.25 mm).

For color options, see our materials chart on page 56.





Rectangular Caps

StockCap offers a broad selection of hard to find Rectangular Caps in popular sizes and colors. Flexible vinyl makes application quick and easy. Plus, Rectangular Caps possess excellent insulation properties. These caps can be produced with the closed end flat or round as indicated in the drawings.



Product Features

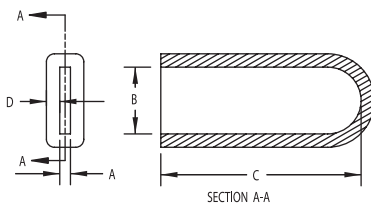
- Thousands of sizes
- Wide variety of color choices
- Available in high-temperature resistant material
- Can be imprinted, punched, or sliced to meet your specifications

Applications

- Tool grips
- Lever and handle covers
- Finishing masks

Rectangular Caps - Round End

Inside Dimension "A"		Inside Dimension "B"		Maximum Inside Length "C"		Nominal Wall Thickness "D"			
Inches	mm	Inches	mm	Inches		At Shorter Length		At Longer Length	
				±.062	±.157	±.010	±.025	±.010	±.025
0.062	1.57	0.312	7.93	4.000	101.60	0.055	1.40	0.065	1.65
		0.343	8.71	3.875	98.43	0.060	1.52	0.065	1.65
		0.375	9.53	4.250	107.95	0.060	1.52	0.065	1.65
		0.406	10.31	1.750	44.45	0.060	1.52	0.060	1.52
		0.437	11.10	4.375	111.13	0.060	1.52	0.065	1.65
		0.468	11.89	1.750	44.45	0.060	1.52	0.060	1.52
		0.625	15.88	4.500	114.30	0.060	1.52	0.065	1.65
		0.750	19.05	4.750	120.65	0.060	1.52	0.065	1.65
		1.150	29.21	2.062	52.39	0.060	1.52	0.060	1.52
0.095	2.41	0.875	22.23	4.750	120.65	0.065	1.65	0.065	1.65
0.125	3.18	0.437	11.10	4.500	114.30	0.060	1.52	0.065	1.65
		0.500	12.70	4.500	114.30	0.060	1.52	0.065	1.65
		0.675	17.15	3.750	95.25	0.065	1.65	0.065	1.65
		0.750	19.05	5.000	127.00	0.060	1.52	0.065	1.65
		1.000	25.40	5.000	127.00	0.060	1.52	0.065	1.65
0.162	4.12	1.250	31.75	6.000	152.40	0.065	1.65	0.065	1.65
0.187	4.75	0.500	12.70	4.250	107.95	0.060	1.52	0.065	1.65
		0.625	15.88	1.500	38.10	0.060	1.52	0.060	1.52
		1.500	38.10	8.000	203.20	0.065	1.65	0.065	1.65
0.250	6.35	0.750	19.05	5.250	133.35	0.065	1.65	0.065	1.65
		1.000	25.40	5.250	133.35	0.060	1.52	0.065	1.65
		1.250	31.75	5.500	139.70	0.065	1.65	0.065	1.65
0.315	8.00	1.772	45.01	5.000	127.00	0.065	1.65	0.065	1.65



Rectangular Caps - Flat End

Inside Dimension "A"		Inside Dimension "B"		Maximum Inside Length "C"		Nominal Wall Thickness "D"			
						At Shorter Length		At Longer Length	
Inches	mm	Inches	mm	Inches	mm	Inches	mm	Inches	mm
				±.062	±1.57	±.010	±0.25	±.010	±0.25
0.035	0.89	0.906	23.01	0.750	19.05	0.050	1.27	0.050	1.27
0.040	1.02	0.250	6.35	0.750	19.05	0.050	1.27	0.050	1.27
0.059	1.50	0.813	20.65	2.250	57.15	0.055	1.40	0.055	1.40
0.062	1.57	0.500	12.70	4.250	107.95	0.060	1.52	0.070	1.78
		1.500	38.10	1.750	44.45	0.060	1.52	0.060	1.52
		1.656	42.06	1.000	25.40	0.060	1.52	0.060	1.52
0.075	1.91	0.300	7.62	1.500	38.10	0.055	1.40	0.055	1.40
0.080	2.03	0.375	9.53	1.375	34.93	0.055	1.40	0.055	1.40
		1.750	44.45	1.250	31.75	0.055	1.40	0.055	1.40
0.090	2.29	0.437	11.10	1.750	44.45	0.055	1.40	0.055	1.40
		1.000	25.40	5.125	130.18	0.055	1.40	0.070	1.78
0.125	3.18	0.500	12.70	4.250	107.95	0.060	1.52	0.065	1.65
		0.562	14.28	4.500	114.30	0.065	1.65	0.065	1.65
		0.750	19.05	4.250	107.95	0.060	1.52	0.065	1.65
		1.125	28.58	2.500	63.50	0.060	1.52	0.060	1.52
		1.187	30.15	1.625	41.28	0.060	1.52	0.060	1.52
		2.250	57.15	4.375	111.13	0.065	1.65	0.065	1.65
		3.313	84.15	1.250	31.75	0.060	1.52	0.060	1.52
0.165	4.19	1.500	38.10	2.000	50.80	0.060	1.52	0.060	1.52
0.187	4.75	0.625	15.88	1.250	31.75	0.060	1.52	0.060	1.52
		0.937	23.80	5.500	139.70	0.065	1.65	0.065	1.65
0.250	6.35	0.625	15.88	1.625	41.28	0.060	1.52	0.060	1.52
		1.000	25.40	1.500	38.10	0.060	1.52	0.060	1.52
		1.250	31.75	2.500	63.50	0.060	1.52	0.060	1.52
		2.000	50.80	6.000	152.40	0.060	1.52	0.065	1.65
0.313	7.95	0.750	19.05	1.500	38.10	0.060	1.52	0.060	1.52
0.368	9.35	0.970	24.64	6.000	152.40	0.065	1.65	0.065	1.65
0.470	11.94	2.125	53.98	1.000	25.40	0.060	1.52	0.060	1.52
0.490	12.45	3.375	85.73	1.250	31.75	0.060	1.52	0.060	1.52
0.500	12.70	4.750	120.65	1.000	25.40	0.060	1.52	0.060	1.52
0.562	14.28	1.375	34.93	1.250	31.75	0.060	1.52	0.060	1.52
0.710	18.03	4.000	101.60	1.000	25.40	0.060	1.52	0.060	1.52
0.750	19.05	1.125	28.58	1.500	38.10	0.060	1.52	0.060	1.52
0.770	19.56	1.594	40.49	1.750	44.45	0.060	1.52	0.060	1.52
1.187	30.15	2.625	66.68	1.250	31.75	0.060	1.52	0.060	1.52

Length (C):

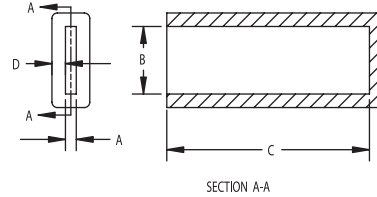
Lengths increment by .062" (1.57mm) and are available up to the maximum shown on this chart.

The inside length is measured to the center of the closed end for the Round End style cap.

The inside length is measured to the inside radius of the closed end for the Flat End style cap.

Inside length tolerance is ± .062" (1.57 mm) for both end styles.

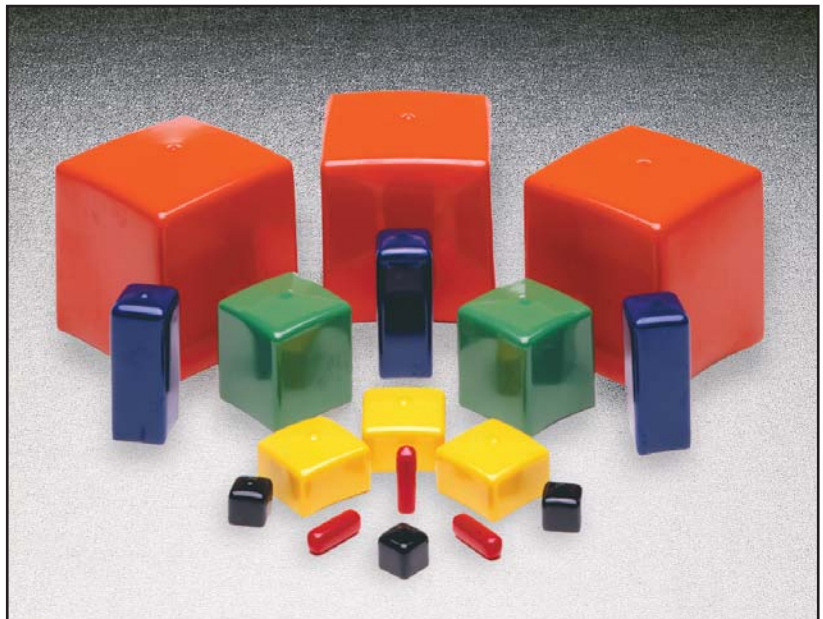
For color options, see our materials chart on page 56.





Square Caps

Vinyl Square Caps are the perfect solution as finishing caps or shipping protection. The durable vinyl material will not split or crack like hard plastic caps, and the flexibility makes installation quick and easy. Vinyl Square Caps are durable and tough enough to handle most industrial needs, yet they provide a great decorative touch to many retail packages. Custom diameters can also be fabricated quickly and inexpensively.



Product Features

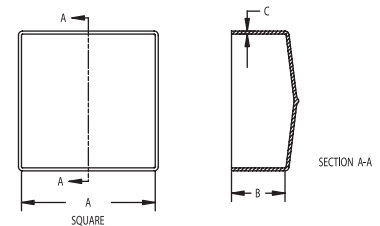
- Wide variety of color choices
- Vibrant high gloss or flat matte finishes
- Available in high-temperature resistant material
- Can be imprinted, punched, or sliced to meet your specifications

Applications

- Decorative end caps
- Finishing masks
- Shipping protectors

Square Caps

Inside Dimension "A"		Maximum Inside Length "B"	
Inches	mm	Inches	mm
		±.062	±1.57
0.250	6.35	4.000	101.60
0.410	10.41	1.500	38.10
0.500	12.70	4.000	101.60
0.532	13.51	1.500	38.10
0.625	15.87	4.000	101.60
0.750	19.05	5.250	133.35
0.793	20.14	1.500	38.10
1.000	25.40	4.000	101.60
1.081	27.46	1.500	38.10
1.250	31.75	4.000	101.60
1.344	34.14	1.500	38.10
1.500	38.10	4.000	101.60
1.750	44.45	4.000	101.60
1.875	47.62	4.000	101.60
1.937	49.20	4.000	101.60
2.000	50.80	4.000	101.60
2.500	63.50	4.000	101.60
3.500	88.90	4.000	101.60
4.000	101.60	4.000	101.60



Wall Thickness: 0.065 inches, +/- .010
1.65 mm, +/- .25



Anti-Roll Caps



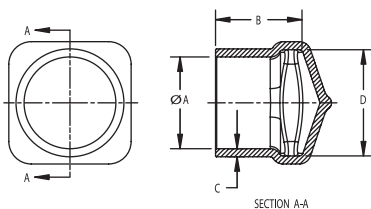
A unique end design makes these easy-to-use vinyl Anti-Roll Caps perfect for many applications. Use to protect threads, tubing and fittings from damage during shipping and processing. Placed on the ends of a round tube, these caps can prevent the tube from rolling, avoiding damage and creating a convenient solution for tube storage.

Product Features

- Large variety of color choices
- Vibrant high gloss or flat matte finishes
- Wide range of diameters with lengths up to 2" (50.80 mm)
- Can be imprinted, punched, or sliced to meet your specifications

Anti-Roll Caps

Inside Diameter "A"		<i>Maximum</i> Inside Length "B"		Nominal Wall Thickness "C"		Square End "D"	
Inches	mm	Inches	mm	Inches	mm	Inches	mm
0.296	7.52	±.062	± 1.57	±.010	± 0.25	0.437	11.10
0.406	10.31	1.250	31.75	0.065	1.65	0.562	14.28
0.531	13.49	1.875	47.63	0.070	1.78	0.687	17.45
0.687	17.45	2.000	50.80	0.070	1.78	0.875	22.23
0.796	20.22	1.500	38.10	0.080	2.03	0.921	23.39
0.921	23.39	2.000	50.80	0.080	2.03	1.062	26.98
1.125	28.58	2.000	50.80	0.080	2.03	1.250	31.75
1.313	33.35	2.000	50.80	0.070	1.78	1.406	35.71
1.656	42.06	2.000	50.80	0.080	2.03	1.750	44.45



Applications

- Decorative end caps
- Tube end caps
- Tubing storage
- Shipping protectors





EZ Tab Caps

Flexible vinyl EZ Tab Caps are easy to remove, thanks to extra long pull tabs. Caps go on snug and remain intact for a superior seal. Custom options are available.

Product Features

- Large variety of color choices
- Wide range of sizes
- High-temperature resistant materials are available
- Can be imprinted, punched, or sliced to meet your specifications

Applications

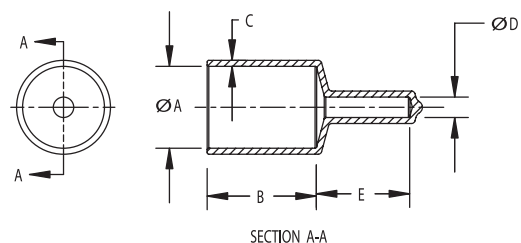
- Finishing masks
- Thread protectors
- Shipping and storage protectors



EZ Tab Caps

Inside Diameter "A"		Maximum Inside Length "B"		Inside Diameter "D"		Inside Length "E"	
Inches	mm	Inches	mm	Inches	mm	Inches	mm
.240	6.10	±.062 1.500	±1.57 38.10	.125	3.18	.625	15.88
.303	7.70	1.500	38.10	.125	3.18	.625	15.88
.365	9.27	1.500	38.10	.125	3.18	.625	15.88
.386	9.80	1.500	38.10	.125	3.18	.625	15.88
.427	10.85	1.750	44.45	.125	3.18	.625	15.88
.490	12.45	1.750	44.45	.125	3.18	.687	17.45
.521	13.23	1.500	38.10	.125	3.18	.687	17.45
.530	13.46	1.500	38.10	.125	3.18	.500	12.70
.552	14.02	1.750	44.45	.125	3.18	.687	17.45
.615	15.62	1.750	44.45	.125	3.18	.687	17.45
.677	17.20	1.750	44.45	.125	3.18	.750	19.05
.735	18.67	1.500	38.10	.125	3.18	.812	20.63
.750	19.05	1.500	38.10	.187	4.75	.855	21.72
.797	20.24	1.500	38.10	.187	4.75	.875	22.23
.835	21.21	1.500	38.10	.187	4.75	.500	12.70
.860	21.84	1.500	38.10	.187	4.75	.843	21.41
.937	23.80	1.500	38.10	.187	4.75	.875	22.23
.985	25.02	1.750	44.45	.187	4.75	.875	22.23
1.060	26.92	1.500	38.10	.187	4.75	.875	22.23
1.125	28.58	1.500	38.10	.187	4.75	.875	22.23
1.250	31.75	1.500	38.10	.187	4.75	.875	22.23

Wall thickness "C" is 0.055 inches (1.40 mm) on all sizes.
Wall tolerances are ±.010 inches (±.025 mm).



Grab Tab Caps



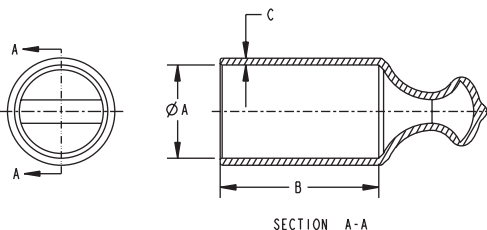
Grab Tabs have an indented tab surface, which reduces the amount of pinching pressure required during installation or removal. This quick and easy method hastens the continuous assembly operations during production. Custom options are available.

Product Features

- Large variety of color choices
- Wide range of sizes
- High-temperature resistant materials are available
- Can be imprinted, punched, or sliced to meet your specifications

Grab Tab Caps

Inside Diameter "A"		Maximum Inside Length "B"	
Inches	mm	Inches	mm
		± .062	± 1.57
0.240	6.10	2.000	50.80
0.302	7.67	2.000	50.80
0.365	9.27	2.000	50.80
0.458	11.63	2.000	50.80
0.490	12.45	2.000	50.80
0.552	14.02	2.000	50.80
0.615	15.62	2.000	50.80
0.677	17.20	2.000	50.80
0.735	18.67	2.000	50.80
0.750	19.05	2.000	50.80



Note:
 Wall thickness "C" is 0.055 inches (1.40 mm) on all sizes.
 Wall tolerances are ±.010 inches (±.025 mm).

Applications

- Finishing masks
- Thread protectors
- Shipping and storage protectors





Hanger Caps and Tips

Colorful Hanger Caps add convenience to hundreds of products. Providing a snug and secure fit, these caps won't slide off even under the toughest conditions. Choose from three styles: Cap, Round Tip or Flat Tip. The Hanger Cap style looks similar to our vinyl Short Cap with a loop on top. The Round Tip is more tubular with the diameter increasing slightly toward the looped end. The Flat Tip style fits rectangular objects.



Product Features

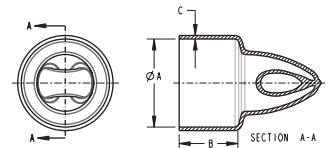
- Closed loop design provides a barrier between the product and the environment
- Large variety of color choices
- Weather resistant
- Won't split or crack

Applications

- Tools
- Tubing
- Brooms

Hanger Caps

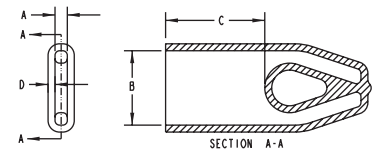
Inside Diameter "A"		Maximum Inside Length "B"	
Inches	mm	Inches	mm
		±.062	± 1.57
0.531	13.49	1.750	44.45
0.800	20.32	1.500	38.10
1.050	26.67	1.500	38.10
1.375	34.93	1.500	38.10
1.640	41.66	1.250	31.75
1.750	44.45	1.500	38.10
1.815	46.10	1.500	38.10
2.000	50.80	1.500	38.10
2.500	63.50	1.500	38.10
3.000	76.20	1.500	38.10



Wall thickness "C" is 0.060 inches (1.52 mm) on all sizes.
Wall tolerances are ±.010 inches (±.25 mm).

Hanger Tips - Flat

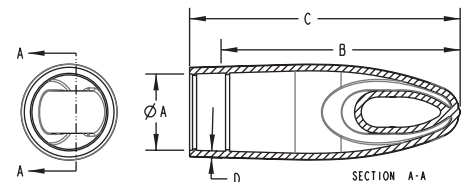
Inside Dimension "A"		Inside Dimension "B"		Maximum Inside Length "C"	
Inches	mm	Inches	mm	Inches	mm
				±.062	± 1.57
0.124	3.15	0.750	19.05	1.625	41.28
0.250	6.35	1.000	25.40	2.250	57.15
0.375	9.53	1.000	25.40	1.750	44.45



Wall thickness "D" is 0.070 inches (1.78 mm) on all sizes.
Wall tolerances are ±.010 inches (±.25 mm).

Hanger Tips - Round

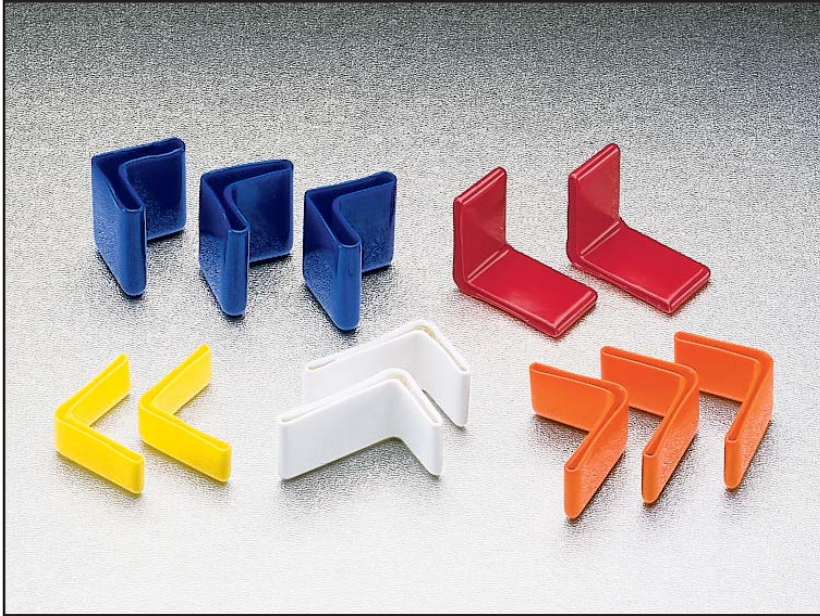
Series Number	Inside Diameter "A"		Outside Length "B"		Outside Length "C"	
	Inches	mm	Inches	mm	Inches	mm
			±.062	± 1.57	±.062	± 1.57
VS-1	0.750	19.05	2.125	53.98	-	-
VL-1	0.875	22.23	-	-	2.750	69.85
VL-2	0.875	22.23	-	-	3.125	79.38



Wall thickness "D" is 0.070 inches (1.78 mm) on all sizes.
Wall tolerances are ±.010 inches (±.25 mm).



Angle Caps



The complete line of Angle Caps is molded from tough vinyl plastisol for easy application and a snug, secure fit. These caps won't slide off and won't split or crack. Custom options are available.

Product Features

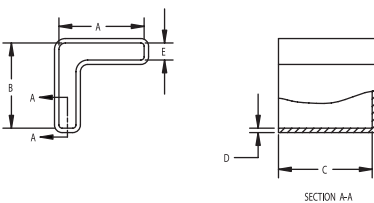
- Large variety of color choices
- Wide range of sizes
- Can be imprinted, punched, or sliced to meet your specifications

Applications

- Bed frames
- Exercise equipment
- Workbenches

Angle Caps

Inside Dimension "E"		Inside Dimension "A"		Inside Dimension "B"		Maximum Inside Length "C"		Nominal Wall Thickness "D"	
Inches	mm	Inches	mm	Inches	mm	Inches	mm	Inches	mm
0.105	2.67	1.500	38.10	1.750	44.45	1.500	38.10	0.060	1.52
0.110	2.79	1.375	34.93	1.750	44.45	1.375	34.93	0.065	1.65
0.110	2.79	1.500	38.10	1.500	38.10	1.000	25.40	0.070	1.78
0.110	2.79	1.750	44.45	1.375	34.93	1.375	34.93	0.060	1.52
0.125	3.18	1.250	31.75	1.250	31.75	1.500	38.10	0.060	1.52
0.250	6.35	1.250	31.75	1.250	31.75	1.500	38.10	0.060	1.52





Vented Caps

Vented Caps allow for the venting of gases that can build up in sealed environments, or to relieve the vacuum caused by a cooling product or component.

Product Features

- Large variety of color choices
- Wide range of sizes
- Can be imprinted, punched, or sliced to meet your specifications

Applications

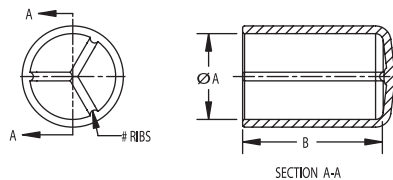
- Fuel tanks
- Condensers
- Tubes



Vented Caps - S-Cap

Inside Diameter "A"		Maximum Inside Length "B"		Number of Ribs
Inches	mm	Inches	mm	
		± .062	± 1.57	
0.614	15.60	1.500	38.10	3
0.700	17.78	1.062	26.97	1
0.835	21.21	0.813	20.65	1
1.240	31.50	1.062	26.97	1
1.375	34.93	1.500	38.10	1
1.420	36.07	1.500	38.10	3
1.625	41.28	2.000	50.80	3

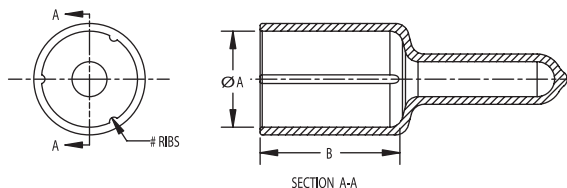
Wall thickness "C" is 0.065 inches (1.65 mm) on all sizes.
Wall tolerances are ±.010 inches (±.25 mm).



Vented Caps - EZ Tab

Inside Diameter "A"		Maximum Inside Length "B"		Number of Ribs
Inches	mm	Inches	mm	
		± .062	± 1.57	
0.687	17.45	1.500	38.10	1
0.825	20.96	1.750	44.45	3
0.937	23.80	1.750	44.45	1

Wall thickness "C" is 0.065 inches (1.65 mm) on all sizes.
Wall tolerances are ±.010 inches (±.25 mm).



End Caps



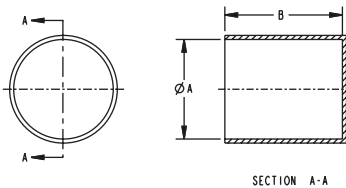
Use C Series End Caps to protect threaded or non-threaded tubing, rods, pipes or shipping tubes. Snug friction fit provides low-cost protection. Standard color is red. Standard color is red, however other colors are available at various order quantities.

Product Features

- Economical
- Effective on parts with or without threads
- Excellent protection
- Conforms to NAS 844

Applications

- Tubing, rods, pipes, bolts & shipping containers



End Caps

Series Number	Inside Diameter "A"		Inside Length "B"	
	Inches	mm	Inches	mm
C-1/8	0.125	3.18	0.590	14.99
C-5/32	0.156	3.96	0.560	14.22
C-3/16	0.187	4.75	0.590	14.99
C-7/32	0.219	5.56	0.750	19.05
C-1/4	0.250	6.35	0.880	22.35
C-9/32	0.281	7.14	0.750	19.05
C-5/16	0.313	7.95	0.880	22.35
C-3/8	0.375	9.53	0.880	22.35
C-7/16	0.438	11.13	0.880	22.35
C-1/2	0.500	12.70	0.880	22.35
C-9/16	0.563	14.30	0.880	22.35
C-5/8	0.625	15.88	0.880	22.35
C-11/16	0.687	17.45	0.880	22.35
C-23/32	0.718	18.24	0.715	18.16
C-3/4	0.750	19.05	0.880	22.35
C-25/32	0.781	19.84	1.000	25.40
C-13/16	0.813	20.65	0.880	22.35
C-7/8	0.875	22.23	0.880	22.35
C-15/16	0.938	23.83	1.000	25.40
C-1	1.000	25.40	1.000	25.40

End Caps Continued

Series Number	Inside Diameter "A"		Inside Length "B"	
	In.	mm.	In.	mm.
C-1-1/16	1.063	27.00	1.000	25.40
C-1-1/8	1.125	28.58	1.000	25.40
C-1-3/16	1.187	30.15	1.000	25.40
C-1-1/4	1.250	31.75	1.000	25.40
C-1-5/16	1.312	33.32	1.000	25.40
C-1-3/8	1.375	34.93	1.000	25.40
C-1-1/2	1.500	38.10	1.000	25.40
C-1-5/8	1.625	41.28	1.000	25.40
C-1-3/4	1.750	44.45	1.000	25.40
C-1-7/8	1.875	47.63	1.000	25.40
C-2	2.000	50.80	0.880	22.35
C-2-1/8	2.125	53.98	1.000	25.40
C-2-1/4	2.250	57.15	0.880	22.35
C-2-3/8	2.375	60.33	0.880	22.35
C-2-1/2	2.500	63.50	0.880	22.35
C-2-3/4	2.750	69.85	1.000	25.40
C-3	3.000	76.20	1.000	25.40
C-3-1/8	3.125	79.38	1.380	35.05
C-3-1/4	3.250	82.55	1.250	31.75
C-3-1/2	3.500	88.90	1.380	35.05





Tear Caps

The unique design of the Tear Cap is the side tab that allows for quick and easy removal of the cap. The side tab tears easily when pulled away from the application. These versatile caps are available for pipe threads and standard threads. Standard color is red. Standard color is red, however other colors are available at various order quantities.

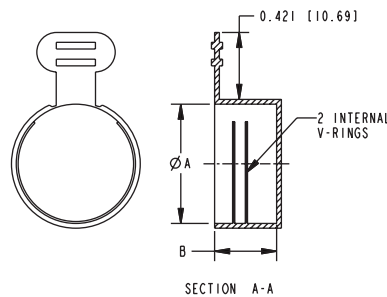


Product Features

- Sizes available to fit both SAE and NPT thread sizes
- Internal rings snap into threads for added retention
- Economical
- Easily removable

Applications

- Rods
- Pipes
- Tubing
- Bolts



Tear Caps - Standard Thread Sizes

Series Number	Thread Size	Inside Diameter "A"		Inside Length "B"	
		Inches	mm	Inches	mm
CZ-5	3/8-24	0.365	9.27	0.440	11.18
CZ-10	7/16-20	0.427	10.85	0.440	11.18
CZ-15	1/2-20	0.490	12.45	0.495	12.57
CZ-20	9/16-18	0.552	14.02	0.475	12.07
CZ-25	5/8-18	0.615	15.62	0.480	12.19
CZ-30	11/16-16	0.677	17.20	0.475	12.07
CZ-35	3/4-16	0.740	18.80	0.560	14.22
CZ-40	13/16-12	0.802	20.37	0.560	14.22
CZ-45	7/8-14	0.865	21.97	0.700	17.78
CZ-50	1-14	0.990	25.15	0.695	17.65
CZ-55	1-1/16	1.052	26.72	0.830	21.08
CZ-60	1-3/16-12	1.177	29.90	0.750	19.05
CZ-65	1-5/16-12	1.302	33.07	0.740	18.80
CZ-70	1-7/16-12	1.427	36.25	0.750	19.05
CZ-75	1-5/8-12	1.615	41.02	0.825	20.96
CZ-80	1-11/16-12	1.677	42.60	0.825	20.96
CZ-85	1-7/8-12	1.865	47.37	0.940	23.88
CZ-90	2-1/2-12	2.490	63.25	1.200	30.48

NPT Sizes

Series Number	Thread Size	Inside Diameter "A"		Inside Length "B"	
		Inches	mm	Inches	mm
CZ-1/8	1/8	0.405	10.29	0.319	8.10
CZ-1/4	1/4	0.540	13.72	0.485	12.32
CZ-3/8	3/8	0.675	17.15	0.491	12.47
CZ-1/2	1/2	0.840	21.34	0.641	16.28
CZ-3/4	3/4	1.050	26.67	0.653	16.59
CZ-1	1	1.315	33.40	0.813	20.65
CZ-1-1/4	1-1/4	1.660	42.16	0.837	21.26
CZ-1-1/2	1-1/2	1.900	48.26	0.854	21.69
CZ-2	2	2.375	60.33	0.887	22.53



Threaded Caps



Our Threaded Caps seal exceptionally well against dirt and moisture, while the knurled exterior allows for an easy on/off application. Threaded Caps provide a positive seal for low pressure requirements, and are suitable for JIC/SAE threaded fittings.

Product Features

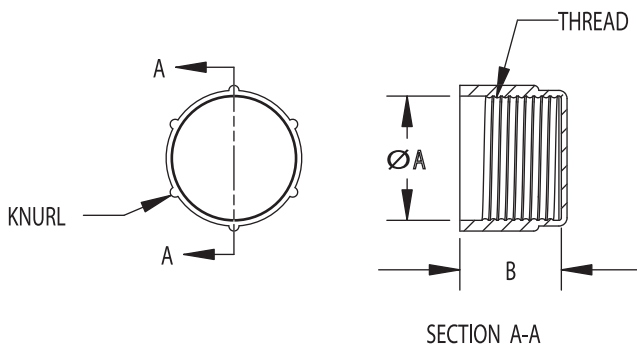
- ASAE Threads 3/8"-24 to 1-1/16"-12
- Protects against moisture, dirt and dust
- Economical
- Parts meet NAS832 spec

Threaded Caps

Series Number	Thread Size	Tubing Size	Inside Diameter "A"		Inside Length "B"	
	Inches	Inches	Inches	mm	Inches	mm
CT-5	3/8-24	3/16	0.380	9.65	0.470	11.94
CT-10	7/16-20	1/4	0.443	11.25	0.470	11.94
CT-15	1/2-20	5/16	0.505	12.83	0.470	11.94
CT-20	5/8-18	3/8	0.630	16.00	0.813	20.65
CT-25	3/4-16	1/2	0.755	19.18	0.570	14.48
CT-30	3/4 NPT		1.038	26.37	0.750	19.05
CT-35	7/8-14	5/8	0.880	22.35	0.680	17.27
CT-40	1-14		1.005	25.53	0.780	19.81
CT-45	1-1/16-12	3/4	1.068	27.13	0.750	19.05

Applications

- Rods
- Pipes
- Tubing





Heat Shrink Caps

Heat Shrink Caps are molded using high-quality cross-linked polyolefin material, and then expanded so that when heat is applied the caps recover to a smaller size. The expanded version allows you to insert an item and then shrink the cap to adhere to the size and shape of the inserted item. An adhesive inside the cap melts forming a permanent bond, preventing moisture from reaching the contents.

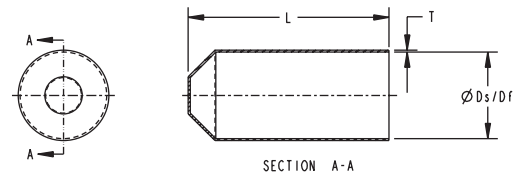


Product Features

- Quick installation using simple tools
- Creates a strong and permanent environmental seal providing excellent resistance to weathering, moisture contamination and adverse environmental conditions
- Special adhesive lining provides seal on irregular cable sheaths

Applications

- Connector ends
- Terminal ends
- Power cables
- Telecom cables
- Compatible with most commonly used cable jackets, i.e. XLPE, PVC or rubber sheathed cable rods



Heat Shrink Caps

Description	Minimum Supplied Inside Diameter "Ds"		Maximum Recovered Inside Diameter "Df"		Recovered Length "L"		Recovered Wall "T"	
	Inches	mm	Inches	mm	+/- 20%		+/- 15%	
					Inches	mm	Inches	mm
10/4	0.394	10.00	0.157	4.00	1.417	36.00	0.079	2.00
15/5	0.591	15.01	0.197	5.00	1.890	48.00	0.087	2.20
22/9	0.866	22.00	0.354	9.00	2.480	63.00	0.091	2.30
35/18	1.378	35.00	0.709	18.00	2.992	76.00	0.118	3.00
55/30	2.165	55.00	1.181	30.00	4.961	126.00	0.130	3.30
75/42	2.953	75.00	1.654	42.00	5.118	130.00	0.130	3.30
100/55	3.937	100.00	2.165	55.00	5.669	144.00	0.150	3.80
120/70	4.724	120.00	2.756	70.00	6.024	153.00	0.157	4.00
160/66	6.299	160.00	2.598	66.00	9.646	245.00	0.197	5.00

Note:

"Ds" = Internal Diameter as supplied "Df" = Internal Diameter after free recovery
Standard Color: Black. Other colors available. Contact us for a quote.

Supplied and recovered diameters

- Supplied is the size of the part when delivered to you.
- Recovered is the size of the part after applying heat and it shrinks to the original molded size.

Electrical Connector Caps



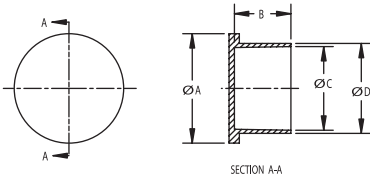
The RC Series Electrical Connector Caps are designed to protect connectors from dust, dents and moisture. Flanged design allows easy application and removal in areas not readily accessible.

Product Features

- Conforms to MIL MS-90376-R
- Low density polyethylene
- Economical

Applications

- Electrical connectors
- Thread protectors
- Tubing end protectors



Electrical Connector Caps

Series Number	Thread Size	Flange Diameter "A"		Inside Length "B"		Inside Diameter "C"		Outside Diameter "D"		MIL Desg.
		Inches	mm	Inches	mm	Inches	mm	Inches	mm	
CE-5	1/2	0.740	18.80	0.500	12.70	0.480	12.19	0.540	13.72	8R
CE-10	9/16	0.780	19.81	0.500	12.70	0.551	14.00	0.611	15.52	
CE-15	5/8	0.840	21.34	0.500	12.70	0.605	15.37	0.665	16.89	10R
CE-20	3/4	0.970	24.64	0.500	12.70	0.720	18.29	0.775	19.69	12R
CE-25	7/8	1.125	28.58	0.500	12.70	0.850	21.59	0.905	22.99	14R
CE-30	1	1.220	30.99	0.500	12.70	0.973	24.71	1.035	26.29	16R
CE-35	1-1/8	1.330	33.78	0.562	14.27	1.093	27.76	1.155	29.34	18R
CE-40	1-1/4	1.465	37.21	0.562	14.27	1.231	31.27	1.301	33.05	20R
CE-45	1-3/8	1.590	40.39	0.562	14.27	1.340	34.04	1.410	35.81	22R
CE-50	1-1/2	1.700	43.18	0.562	14.27	1.463	37.16	1.533	38.94	24R





Electrical Connector Plugs

Electrical Connector Plugs are designed to protect electrical connectors from moisture, dirt and dust. These low-density polyethylene plugs are used for tubing and fittings. Flanged style offers easy removal for a wide variety of applications.

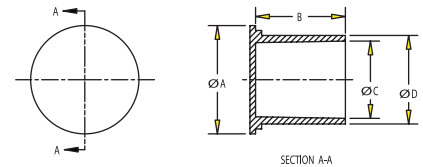


Product Features

- Conforms to MIL MS-90376-Y
- Conforms to NAS-837
- Easy removal
- Seals out contaminants

Applications

- Thread protectors
- Tubing end protectors



Electrical Connector Plugs

Series Number	Thread Size	Flange Diameter "A"		Inside Length "B"		Inside Diameter "C"		Outside Diameter "D"		MIL Desg.
		Inches	mm	Inches	mm	Inches	mm	Inches	mm	
PE-5	1/2	0.670	17.02	0.625	15.88	0.413	10.49	0.483	12.27	8Y
PE-10	5/8	0.750	19.05	0.625	15.88	0.530	13.46	0.595	15.11	10Y
PE-15	3/4	0.860	21.84	0.625	15.88	0.655	16.64	0.715	18.16	12Y
PE-20	7/8	1.031	26.19	0.625	15.88	0.785	19.94	0.845	21.46	14Y
PE-25	1	1.125	28.58	0.625	15.88	0.893	22.68	0.963	24.46	16Y
PE-30	1-1/8	1.250	31.75	0.625	15.88	1.028	26.11	1.088	27.64	18Y
PE-35	1-1/4	1.406	35.71	0.625	15.88	1.150	29.21	1.215	30.86	20Y
PE-40	1-3/8	1.500	38.10	0.625	15.88	1.270	32.26	1.340	34.04	22Y
PE-45	1-1/2	1.640	41.66	0.625	15.88	1.390	35.31	1.460	37.08	24Y



Threaded Plugs



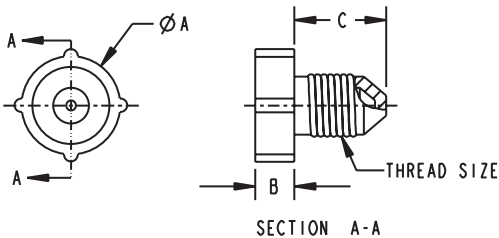
Threaded plugs are designed for use on flared fittings. Parts are knurled to aid with insertion and removal, while creating a positive seal for low pressure requirements.

Product Features

- Knurled for easy on and off motions
- Seals out contaminants
- Suitable for JIC/SAE threaded fittings
- Parts meet NAS833 spec

Applications

- Thread protectors
- Finishing masks
- Shipping protectors



Threaded Plugs

Series Number	Thread Size		Tubing Size		Dash Number	Flange Diameter "A"		Flange Thickness "B"		Plug Length "C"	
	Inches		Inches	mm		Inches	mm	Inches	mm	Inches	mm
PT-5	5/16-24		1/8	3.18	2	0.440	11.18	0.180	4.57	0.440	11.18
PT-10	3/8-24		3/16	4.76	3	0.500	12.70	0.180	4.57	0.460	11.68
PT-15	7/16-20		1/4	6.35	4	0.620	15.75	0.190	4.83	0.530	13.46
PT-20	1/2-20		5/16	7.94	5	0.680	17.27	0.250	6.35	0.530	13.46
PT-25	9/16-18		3/8	9.53	6	0.810	20.57	0.250	6.35	0.500	12.70
PT-30	5/8-18		3/8	9.53	-	0.810	20.57	0.250	6.35	0.593	15.06
PT-35	3/4-16		1/2	12.70	8	0.940	23.88	0.250	6.35	0.750	19.05
PT-40	7/8-14		5/8	15.88	10	1.060	26.92	0.250	6.35	0.870	22.10
PT-45	1-1/16-12		3/4	19.05	12	1.250	31.75	0.250	6.35	0.890	22.61
PT-50	1-1/16-14		3/4	19.05	-	1.310	33.27	0.250	6.35	1.120	28.45
PT-55	1-5/16-12		1	25.40	16	1.500	38.10	0.250	6.35	0.930	23.62



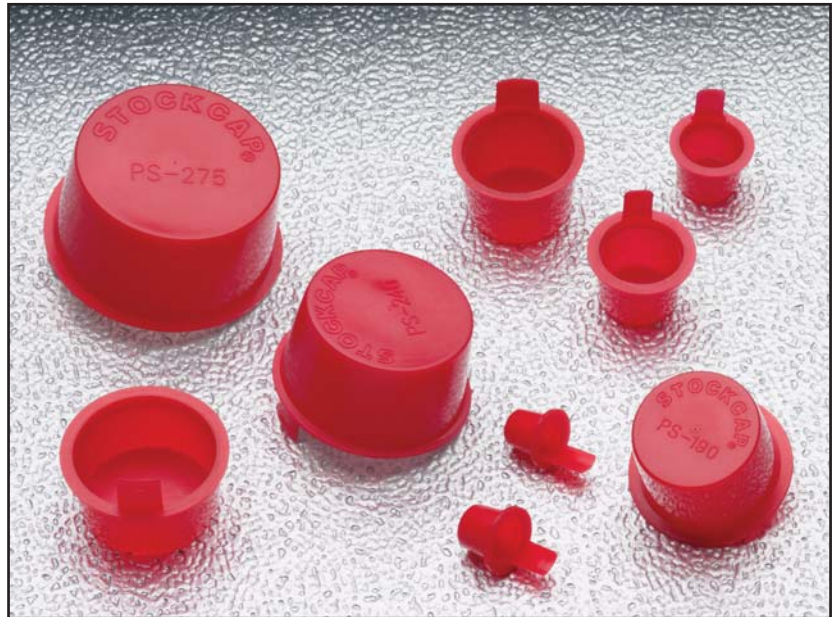


Side Pull Plugs

This series of polyethylene plugs are designed for easy removal in those hard to reach locations.

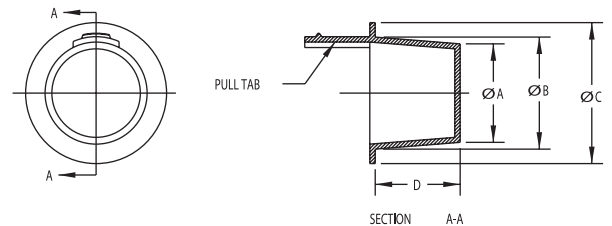
Product Features

- Ideal for NPT and standard threads
- Side pull aids in removal
- Available in sizes from 3/8" to 1-1/2" NPT



Applications

- Thread protectors
- Tubing end protectors
- Hydraulic fittings



Side Pull Plugs

Series Number	Outside Diameter "A"		Outside Diameter "B"		Flange Diameter "C"		Plug Length "D"		Common Plug Application
	Inches	mm	Inches	mm	Inches	mm	Inches	mm	
PS-30	0.299	7.59	0.365	9.27	0.500	12.70	0.380	9.65	3/8 Standard Thread
PS-40	0.330	8.38	0.396	10.06	0.530	13.46	0.380	9.65	1/8 NPT
PS-55	0.390	9.91	0.456	11.58	0.590	14.99	0.380	9.65	-
PS-60	0.419	10.64	0.485	12.32	0.630	16.00	0.380	9.65	1/2 Standard Thread
PS-65	0.447	11.35	0.513	13.03	0.660	16.76	0.380	9.65	1/4 NPT
PS-70	0.471	11.96	0.547	13.89	0.690	17.53	0.440	11.18	9/16 Standard Thread
PS-80	0.532	13.51	0.608	15.44	0.750	19.05	0.440	11.18	5/8 Standard Thread
PS-90	0.550	13.97	0.631	16.03	0.750	19.05	0.470	11.94	-
PS-100	0.580	14.73	0.667	16.94	0.810	20.57	0.500	12.70	3/8 NPT
PS-120	0.675	17.15	0.755	19.18	0.880	22.35	0.500	12.70	-
PS-125	0.690	17.53	0.788	20.02	0.940	23.88	0.560	14.22	1/2 NPT
PS-165	0.866	22.00	0.975	24.77	1.130	28.70	0.630	16.00	3/4 NPT
PS-170	0.915	23.24	1.040	26.42	1.160	29.46	0.690	17.53	1-1/16 Standard Thread
PS-190	1.094	27.79	1.215	30.86	1.410	35.81	0.750	19.05	-
PS-200	1.175	29.85	1.284	32.61	1.440	36.58	0.630	16.00	1 NPT
PS-240	1.447	36.75	1.600	40.64	1.750	44.45	0.880	22.35	1-1/4 NPT
PS-275	1.780	45.21	1.950	49.53	2.130	54.10	1.000	25.40	1-1/2 NPT



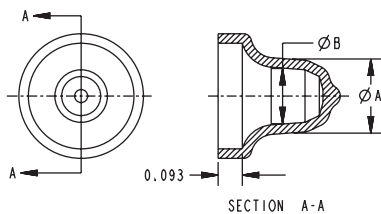


Vinyl Plus Plugs

More flexible than rigid poly plugs, Plus Plugs are easier to insert and remove with our unique 360° pull tab design. Plus Plugs conform to internal threads and won't move during manufacturing and shipping.

Product Features

- One size fits several different ports
- High-temperature resistant material available
- Plugs won't shred, split or crack



Applications

- Finishing masks
- Thread protectors
- Shipping protectors
- Moisture and contamination barriers

Vinyl Plus Plugs

Series Number	Minimum Outside Diameter "A"		Maximum Outside Diameter "A"		Inside Diameter "B"		To Fit N.P.T.				To Fit UN Thread				
	Inches	mm	Inches	mm	Inches	mm	Cap		Plug		Cap		Plug		
SR1	0.280	7.11	0.290	7.37	0.220	5.59									
SR2	0.370	9.40	0.390	9.91	0.288	7.32			1/8	3.18	5/16	7.94	3/8	9.53	
SR25	0.420	10.67	0.440	11.18	0.338	8.59	1/8	3.18			3/8	9.53	7/16	11.11	
SR3	0.485	12.32	0.505	12.83	0.362	9.20			1/4	6.35	3/8	9.53	1/2	12.70	
SR35	0.535	13.59	0.555	14.10	0.443	11.25	1/4	6.35			1/2	12.70	9/16	14.29	
SR4	0.640	16.26	0.660	16.76	0.513	13.03	3/8	9.53	3/8	9.53	9/16	14.29	5/8	15.88	
SR5	0.795	20.19	0.815	20.70	0.679	17.25			1/2	12.70	5/8	15.88	3/4	19.05	
SR55	0.840	21.34	0.860	21.84	0.740	18.80	1/2	12.70			3/4	19.05	7/8	22.23	
SR6	1.010	25.65	1.035	26.29	0.893	22.68			3/4	19.05	1-1/16	26.99	1-1/16	26.99	
SR65	1.083	27.51	1.123	28.52	0.973	24.71	3/4	19.05			1-1/8	28.58	1-1/8	28.58	
SR7	1.260	32.00	1.285	32.64	1.143	29.03	1	25.40	1	25.40	1-3/16	30.16	1-1/4	31.75	
											1-1/4	31.75	1-5/16	33.34	
											1-5/16	33.34			
SR 8	1.658	42.11	1.698	43.13	1.548	39.32	1-1/4	31.75	1-1/4	31.75	1-9/16	39.69	1-5/8	41.28	
											1-5/8	41.28	1-11/16	42.86	



Tapered Plugs

Tapered Plugs (T-Plugs) are an excellent low-cost option. The tapered design goes on easily and stays in place.

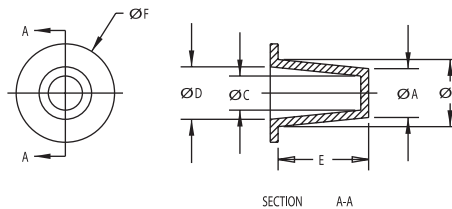
Product Features

- Fits most SAE type fittings, NPT threads and unthreaded standard weight pipe
- Also suitable for JIC/UNF and BSP thread fittings
- Can be used as a cap or a plug



Applications

- Tube ends
- Shipping and storage protection



Tapered Plugs

Series Number	As Plug Outside Diameter				As Cap Inside Diameter				Depth "E"		Flange "F"		Common Applications	
	"A"		"B"		"C"		"D"		Inches	mm	Inches	mm	As Plug	As Cap
T-5	0.116	2.95	0.182	4.62	0.053	1.35	0.120	3.05	0.380	9.65	0.310	7.87		
T-10	0.145	3.68	0.205	5.21	0.079	2.01	0.150	3.81	0.380	9.65	0.410	10.41		
T-15	0.173	4.39	0.240	6.10	0.111	2.82	0.177	4.50	0.380	9.65	0.380	9.65		
T-17	0.187	4.75	0.251	6.38	0.124	3.15	0.196	4.98	0.345	8.76	0.372	9.45		
T-18	0.209	5.31	0.266	6.76	0.148	3.76	0.212	5.38	0.347	8.81	0.435	11.05		
T-20	0.236	5.99	0.302	7.67	0.174	4.42	0.240	6.10	0.380	9.65	0.440	11.18	5/16 standard thread	
T-25	0.267	6.78	0.335	8.51	0.205	5.21	0.273	6.93	0.380	9.65	0.470	11.94		
T-30	0.299	7.59	0.365	9.27	0.235	5.97	0.302	7.67	0.380	9.65	0.500	12.70	3/8 standard thread	1/4 standard thread
T-40	0.330	8.38	0.396	10.06	0.267	6.78	0.333	8.46	0.380	9.65	0.530	13.46	1/8 NPT	
T-45	0.361	9.17	0.427	10.85	0.298	7.57	0.365	9.27	0.380	9.65	0.560	14.22	7/16 standard thread	
T-55	0.390	9.91	0.456	11.58	0.327	8.31	0.394	10.01	0.380	9.65	0.590	14.99	3/8 standard thread	
T-60	0.419	10.64	0.485	12.32	0.356	9.04	0.422	10.72	0.380	9.65	0.630	16.00	1/4 NPT - 1/2 std thread	1/8 NPT
T-65	0.447	11.35	0.513	13.03	0.385	9.78	0.451	11.46	0.380	9.65	0.660	16.76	7/16 standard thread	
T-70	0.471	11.96	0.547	13.89	0.409	10.39	0.485	12.32	0.440	11.18	0.690	17.53	9/16 standard thread	
T-75	0.500	12.70	0.576	14.63	0.440	11.18	0.516	13.11	0.440	11.18	0.720	18.29	1/2 standard thread	
T-80	0.532	13.51	0.608	15.44	0.468	11.89	0.545	13.84	0.440	11.18	0.750	19.05	5/8 standard thread	1/4 NPT
T-85	0.533	13.54	0.562	14.27	0.477	12.12	0.506	12.85	0.220	5.59	0.680	17.27		
T-90	0.550	13.97	0.631	16.03	0.487	12.37	0.568	14.43	0.470	11.94	0.750	19.05	3/8 NPT	9/16 standard thread
T-100	0.580	14.73	0.667	16.94	0.518	13.16	0.605	15.37	0.500	12.70	0.810	20.57		
T-105	0.610	15.49	0.695	17.65	0.549	13.94	0.634	16.10	0.500	12.70	0.840	21.34	5/8 standard thread	
T-110	0.640	16.26	0.727	18.47	0.578	14.68	0.664	16.87	0.500	12.70	0.880	22.35	3/4 standard thread	

Tapered Plugs Continued

Series Number	As Plug Outside Diameter				As Cap Inside Diameter				Depth "E"		Flange "F"		Common Applications	
	"A"		"B"		"C"		"D"						As Plug	As Cap
	Inches	mm	Inches	mm	Inches	mm	Inches	mm	Inches	mm	Inches	mm		
T-120	0.675	17.15	0.755	19.18	0.613	15.57	0.693	17.60	0.500	12.70	0.880	22.35		3/8 NPT
T-125	0.690	17.53	0.788	20.02	0.628	15.95	0.726	18.44	0.560	14.22	0.940	23.88	1/2 NPT	
T-130	0.725	18.42	0.823	20.90	0.663	16.84	0.761	19.33	0.560	14.22	0.970	24.64		3/4 standard thread
T-140	0.750	19.05	0.848	21.54	0.687	17.45	0.785	19.94	0.560	14.22	1.000	25.40	7/8 standard thread	
T-145	0.802	20.37	0.911	23.14	0.740	18.80	0.849	21.56	0.630	16.00	1.060	26.92		1/2 NPT
T-150	0.815	20.70	0.930	23.62	0.753	19.13	0.868	22.05	0.630	16.00	1.090	27.69		
T-163	0.867	22.02	0.971	24.66	0.807	20.50	0.910	23.11	0.715	18.16	1.130	28.70		7/8 standard thread
T-165	0.866	22.00	0.975	24.77	0.803	20.40	0.912	23.16	0.630	16.00	1.130	28.70		
T-170	0.915	23.24	1.040	26.42	0.855	21.72	0.980	24.89	0.690	17.53	1.160	29.46	3/4 NPT, 1-1/16 std thread	
T-180	0.964	24.49	1.090	27.69	0.901	22.89	1.027	26.09	0.750	19.05	1.250	31.75		3/4 NPT
T-183	0.984	24.99	1.054	26.77	0.913	23.19	0.988	25.10	0.468	11.89	1.253	31.83		
T-185	0.995	25.27	1.145	29.08	0.933	23.70	1.083	27.51	0.750	19.05	1.310	33.27		1 standard thread
T-190	1.094	27.79	1.215	30.86	1.031	26.19	1.152	29.26	0.750	19.05	1.410	35.81		1-1/8 standard thread
T-200	1.175	29.85	1.284	32.61	1.113	28.27	1.222	31.04	0.630	16.00	1.440	36.58		1 NPT
T-205	1.224	31.09	1.355	34.42	1.161	29.49	1.292	32.82	0.750	19.05	1.500	38.10	1-5/16 standard thread	
T-210	1.235	31.37	1.360	34.54	1.173	29.79	1.298	32.97	0.810	20.57	1.500	38.10		1 NPT - 1-1/4 standard thread
T-215	1.285	32.64	1.346	34.19	1.227	31.17	1.288	32.72	0.380	9.65	1.470	37.34		
T-220	1.312	33.32	1.465	37.21	1.249	31.72	1.402	35.61	0.880	22.35	1.630	41.40		1-3/8 standard thread
T-225	1.239	31.47	1.507	38.28	1.169	29.69	1.437	36.50	0.750	19.05	1.630	41.40		
T-240	1.447	36.75	1.600	40.64	1.384	35.15	1.537	39.04	0.880	22.35	1.750	44.45		1-1/4 NPT
T-245	1.513	38.43	1.600	40.64	1.451	36.86	1.537	39.04	0.500	12.70	1.750	44.45	1-5/8 standard thread	
T-247	1.516	38.51	1.601	40.67	1.456	36.98	1.541	39.14	0.716	18.19	1.753	44.53		1-1/2 standard thread
T-250	1.560	39.62	1.682	42.72	1.498	38.05	1.620	41.15	0.750	19.05	1.880	47.75	1-3/4 standard thread	
T-255	1.630	41.40	1.750	44.45	1.568	39.83	1.688	42.88	0.750	19.05	1.940	49.28		1-5/8 standard thread
T-265	1.750	44.45	1.880	47.75	1.688	42.88	1.818	46.18	0.750	19.05	2.000	50.80		1-1/2 NPT
T-270	1.781	45.24	1.805	45.85	1.722	43.74	1.746	44.35	0.380	9.65	2.000	50.80	1-1/2 NPT - 1-7/8 std thread	
T-275	1.780	45.21	1.950	49.53	1.718	43.64	1.888	47.96	1.000	25.40	2.130	54.10	1-1/2 NPT	1-3/4 standard thread
T-280	1.844	46.84	2.000	50.80	1.781	45.24	1.938	49.23	1.000	25.40	2.130	54.10		1-7/8 standard thread
T-285	1.900	48.26	2.076	52.73	1.837	46.66	2.013	51.13	1.000	25.40	2.250	57.15		
T-295	1.975	50.17	2.132	54.15	1.913	48.59	2.070	52.58	1.000	25.40	2.250	57.15		2 standard thread
T-300	2.015	51.18	2.147	54.53	1.953	49.61	2.085	52.96	0.750	19.05	2.310	58.67		
T-305	2.067	52.50	2.243	56.97	2.005	50.93	2.181	55.40	1.000	25.40	2.440	61.98	2-1/4 standard thread	
T-310	2.125	53.98	2.406	61.11	2.063	52.40	2.344	59.54	1.000	25.40	2.530	64.26	2 NPT	
T-315	2.136	54.25	2.312	58.72	2.074	52.68	2.250	57.15	1.000	25.40	2.560	65.02		2-1/4 standard thread
T-320	2.230	56.64	2.260	57.40	2.168	55.07	2.198	55.83	0.500	12.70	2.500	63.50		
T-325	2.298	58.37	2.464	62.59	2.235	56.77	2.401	60.99	1.000	25.40	2.630	66.80		2 NPT
T-330	2.307	58.60	2.650	67.31	2.245	57.02	2.588	65.74	1.250	31.75	2.780	70.61		2-1/2 standard thread
T-335	2.395	60.83	2.602	66.09	2.333	59.26	2.540	64.52	1.030	26.16	2.810	71.37		
T-340	2.457	62.41	2.750	69.85	2.395	60.83	2.688	68.28	1.000	25.40	2.880	73.15		
T-345	2.480	62.99	2.644	67.16	2.418	61.42	2.582	65.58	0.630	16.00	2.780	70.61		
T-350	2.555	64.90	2.690	68.33	2.493	63.32	2.628	66.75	0.630	16.00	2.880	73.15		
T-355	2.641	67.08	2.790	70.87	2.579	65.51	2.728	69.29	0.750	19.05	2.940	74.68	2-1/2 NPT	
T-360	2.760	70.10	3.005	76.33	2.685	68.20	2.947	74.85	1.000	25.40	3.150	80.01	3 standard thread	
T-365	2.849	72.36	2.980	75.69	2.787	70.79	2.918	74.12	0.750	19.05	3.250	82.55		2-1/2 NPT
T-370	2.975	75.57	3.103	78.82	2.915	74.04	3.041	77.24	0.750	19.05	3.340	84.84		
T-375	2.982	75.74	3.245	82.42	2.912	73.96	3.175	80.65	1.000	25.40	3.380	85.85		
T-380	3.090	78.49	3.370	85.60	3.020	76.71	3.300	83.82	1.000	25.40	3.500	88.90		
T-385	3.270	83.06	3.562	90.47	3.200	81.28	3.492	88.70	1.130	28.70	3.690	93.73	3 NPT	3 NPT
T-390	3.325	84.46	3.457	87.81	3.245	82.42	3.377	85.78	0.750	19.05	3.630	92.20		
T-395	3.470	88.14	3.600	91.44	3.410	86.61	3.540	89.92	0.750	19.05	3.880	98.55		
T-405	3.680	93.47	3.800	96.52	3.610	91.69	3.730	94.74	0.750	19.05	4.000	101.60		
T-410	3.790	96.27	3.920	99.57	3.710	94.23	3.840	97.54	0.750	19.05	4.120	104.65	3-1/2 NPT	
T-415	3.930	99.82	4.070	103.38	3.860	98.04	4.000	101.60	0.750	19.05	4.380	111.25		3-1/2 NPT
T-420	4.020	102.11	4.140	105.16	3.940	100.08	4.070	103.38	0.750	19.05	4.530	115.06		
T-430	4.270	108.46	4.430	112.52	4.180	106.17	4.340	110.24	0.880	22.35	4.880	123.95	4 NPT	
T-435	4.370	111.00	4.620	117.35	4.290	108.97	4.540	115.32	1.000	25.40	5.000	127.00		4 NPT



Tubing Inserts

Low-density polyethylene Tubing Inserts are an inexpensive way to provide a finished look to tube ends of various shapes and sizes. Square, Round, and Rectangular Tubing Inserts feature a tapered rib design that, when inserted into a tube, performs efficiently to ensure a tight fit. The plastic inserts are tough enough to protect the tube end from grinding and rubbing against hard, rough exteriors, yet smooth enough to glide easily over surfaces preventing damage to the product and flooring. The round edge design of all three styles contributes to this smooth action. Black is offered as the standard color and other colors are available upon request.

Product Features

- Tapered for tight fit
- Weather resistant
- Multiple shapes available

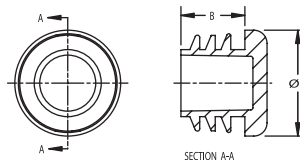
Applications

- Exercise equipment
- Patio furniture
- Metal furniture
- Appliances
- Office machines
- Computer stands
- Tubular display units



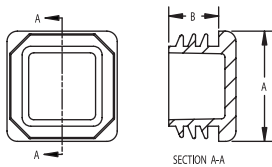
Tubing Inserts - Round

Part Number	Series Number	Tube Size		Head Diameter "A"		Plug Length "B"	
		OD Inches	Gauge	Inches	mm	Inches	mm
094178	TIR-1/2	1/2	16 - 20	0.500	12.70	0.453	11.51
155180	TIR-5/8	5/8	14 - 20	0.625	15.88	0.400	10.16
417382	TIR-3/4	3/4	14 - 20	0.750	19.05	0.453	11.51
304873	TIR-7/8	7/8	14 - 20	0.875	22.23	0.500	12.70
223902	TIR-1	1	10 - 14	1.000	25.40	0.453	11.51
008753	TIR-1	1	14 - 20	1.000	25.40	0.453	11.51
040751	TIR-1-1/8	1 1/8	14 - 20	1.125	28.58	0.510	12.95
040144	TIR-1-1/4	1 1/4	10 - 14	1.250	31.75	0.511	12.98
905438	TIR-1-1/4	1 1/4	14 - 20	1.250	31.75	0.490	12.45
022161	TIR-1-1/2	1 1/2	14 - 20	1.500	38.10	0.511	12.98
071974	TIR-1-5/8	1 5/8	14 - 20	1.625	41.28	0.511	12.98
774323	TIR-1-3/4	1 3/4	14 - 20	1.750	44.45	0.600	15.24
268531	TIR-2	2	10 - 14	2.000	50.80	0.560	14.22
035368	TIR-2	2	14 - 20	2.000	50.80	0.560	14.22
894950	TIR-2-1/4	2 1/4	14 - 20	2.250	57.15	0.560	14.22
004638	TIR-2-3/8	2 3/8	10 - 14	2.375	60.33	0.710	18.03
384883	TIR-2-1/2	2 1/2	8 - 12	2.500	63.50	0.800	20.32
601965	TIR-2-1/2	2 1/2	14 - 18	2.500	63.50	0.800	20.32



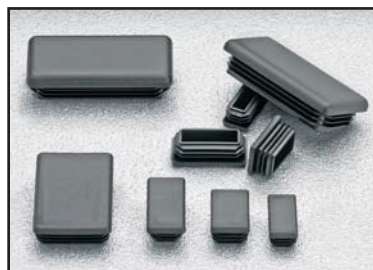
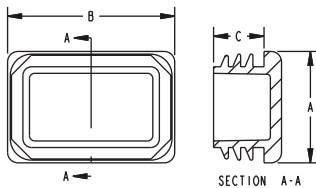
Tubing Inserts - Square

Part Number	Series Number	Tube Size		Head Dimension "A"		Plug Length "B"	
		OD Inches	Gauge	Inches	mm	Inches	mm
078400	TISQ - 1/2	1/2	16 - 18	0.500	12.70	0.480	12.19
012296	TISQ - 5/8	5/8	14 - 20	0.625	15.88	0.480	12.19
046471	TISQ - 3/4	3/4	14 - 20	0.750	19.05	0.453	11.51
073715	TISQ - 7/8	7/8	14 - 20	0.875	22.23	0.500	12.70
147817	TISQ - 1	1	10 - 14	1.000	25.40	0.440	11.18
149731	TISQ - 1	1	14 - 20	1.000	25.40	0.430	10.92
622292	TISQ - 1	1	16 - 18	1.000	25.40	0.480	12.19
094631	TISQ - 1-1/8	1 1/8	14 - 20	1.125	28.58	0.490	12.45
884421	TISQ - 1-1/4	1 1/4	14 - 20	1.250	31.75	0.490	12.45
359629	TISQ - 1-3/8	1 3/8	14 - 20	1.375	34.93	0.470	11.94
745721	TISQ - 1-1/2	1 1/2	10 - 14	1.500	38.10	0.492	12.50
323374	TISQ - 1-3/4	1 3/4	14 - 20	1.750	44.45	0.780	19.81
960380	TISQ - 2	2	10 - 14	2.000	50.80	0.720	18.29
843773	TISQ - 2	2	14 - 20	2.000	50.80	0.720	18.29



Tubing Inserts - Rectangular

Part Number	Series Number	Tube Size		Head Dimension				Plug Length "C"	
		Inches	Gauge	"A"		"B"		Inches	mm
				Inches	mm	Inches	mm	Inches	mm
042211	TIRC	1/2 x 1	16 - 18	0.500	12.70	1.000	25.40	0.438	11.13
982524	TIRC	5/8 x 1-1/4	16 - 18	0.625	15.88	1.250	31.75	0.438	11.13
038298	TIRC	5/8 x 1-3/8	14 - 20	0.625	15.88	1.375	34.93	0.450	11.43
770553	TIRC	3/4 x 1-1/2	14 - 20	0.750	19.05	1.500	38.10	0.438	11.13
036886	TIRC	1 x 1-1/2	14 - 20	1.000	25.40	1.500	38.10	0.438	11.13
130712	TIRC	1 x 2	10 - 14	1.000	25.40	2.000	50.80	0.450	11.43
684284	TIRC	1 x 2	14 - 20	1.000	25.40	2.000	50.80	0.450	11.43
490695	TIRC	1 x 2-1/2	14 - 20	1.000	25.40	2.500	63.50	0.450	11.43
076299	TIRC	1-1/2 x 2-1/2	14 - 20	1.500	38.10	2.500	63.50	0.520	13.21
789707	TIRC	2 x 3	10 - 14	2.000	50.80	3.000	76.20	0.520	13.21





Rubber Seal Plugs with Tabs

Rubber Seal Plugs with a tabbed end are designed for plugging copper tubing and components in the HVAC industry. The standard color is black, but custom colors are available. Application Specialists are available to guide you in making the right selection.



Product Features

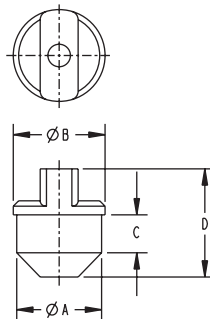
- Tab allows for easy insertion and removal
- Hole in tab allows for plunger when inserting gases
- Special material blend reseals after needle injection of gases
- Non-staining

Applications

- Copper tubing, dryers, filters
- HVAC industry

Rubber Seal Plugs with Tabs

Part Number	Series Number	Plug Diameter "A"		Flange Diameter "B"		Plug Length "C"		Overall Length "D"	
		Inches	mm	Inches	mm	Inches	mm	Inches	mm
211643	RSP-0234WT	0.234	5.94	0.375	9.53	0.375	9.53	0.906	23.01
394869	RSP-0313WT	0.313	7.95	0.413	10.49	0.438	11.13	1.063	27.00
563386	RSP-0335WT	0.335	8.51	0.435	11.05	0.438	11.13	1.063	27.00
285385	RSP-0375WT	0.375	9.53	0.475	12.07	0.438	11.13	1.063	27.00
658610	RSP-0470WT	0.470	11.94	0.570	14.48	0.438	11.13	1.188	30.18
995997	RSP-0610WT	0.610	15.49	0.710	18.03	0.490	12.45	1.261	32.03
054032	RSP-0628WT	0.628	15.94	0.750	19.05	0.688	17.46	1.495	37.97
211586	RSP-0703WT	0.703	17.86	0.783	19.89	0.438	11.13	1.187	30.15
985068	RSP-0828WT	0.828	21.03	0.908	23.06	0.438	11.13	1.187	30.15
031908	RSP-0980WT	0.980	24.89	1.060	26.92	0.438	11.13	1.249	31.72
548428	RSP-1125WT	1.125	28.58	1.375	34.93	0.750	19.05	1.619	41.12



Rubber Seal Plugs



Rubber seal plugs are sized to fit standard copper tube dimensions. They provide a means to protect and seal tubing used in various applications including HVAC components and tubing for medical use. The press fit and self-sealing material allow for the injection of gas to keep the tube clean and dry during shipment and storage.

Product Features

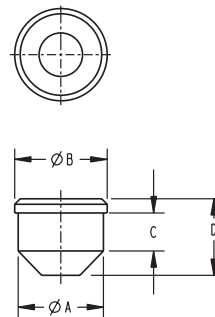
- Tapered end for easy insertion
- Self-sealing
- Non-staining

Applications

- Copper tubing (ACR, Oxy, L, K, M, DWV, Medical)
- Compressors

Rubber Seal Plugs

Part Number	Series Number	Plug Diameter "A"		Flange Diameter "B"		Plug Length "C"		Overall Length "D"	
		Inches	mm	Inches	mm	Inches	mm	Inches	mm
008343	RSP0250	0.250	6.35	0.350	8.89	0.375	9.53	0.618	15.71
390429	RSP0313	0.313	7.95	0.413	10.49	0.438	11.13	0.709	18.00
376331	RSP0365	0.365	9.27	0.465	11.81	0.438	11.13	0.731	18.57
185651	RSP0375	0.375	9.53	0.475	12.07	0.438	11.13	0.736	18.68
056512	RSP0400	0.400	10.16	0.500	12.70	0.438	11.13	0.746	18.96
100949	RSP0438	0.438	11.13	0.538	13.67	0.438	11.13	0.763	19.38
032880	RSP0470	0.470	11.94	0.570	14.48	0.438	11.13	0.777	19.73
875910	RSP0480	0.480	12.19	0.580	14.73	0.438	11.13	0.781	19.84
089148	RSP0500	0.500	12.70	0.600	15.24	0.438	11.13	0.790	20.06
021079	RSP0562	0.562	14.27	0.662	16.81	0.438	11.13	0.817	20.74
129224	RSP0703	0.703	17.86	0.803	20.40	0.500	12.70	0.940	23.86
636191	RSP0750	0.750	19.05	0.850	21.59	0.500	12.70	0.960	24.38
981033	RSP0828	0.828	21.03	0.928	23.57	0.500	12.70	0.994	25.24
030235	RSP0938	0.938	23.83	1.038	26.37	0.625	15.88	1.166	29.62
099833	RSP0980	0.980	24.89	1.080	27.43	0.625	15.88	1.185	30.09
228908	RSP1125	1.125	28.58	1.255	31.88	0.750	19.05	1.146	29.12





Snap Ring Flange Covers

Made from flexible PVC, Snap Ring Flange Covers protect faces and edges of flanges, threads, flared or beaded tubes and ducts. Unique design allows for easy snap-on application without the use of tools, yet provides a snug, conforming fit. Excellent for protecting against the contamination, nicks or abrasion of parts during shipping, handling and storage.



Product Features

- Snap ring design provides labor saving application removal
- Durable material won't crack, split or warp
- Covers are reusable

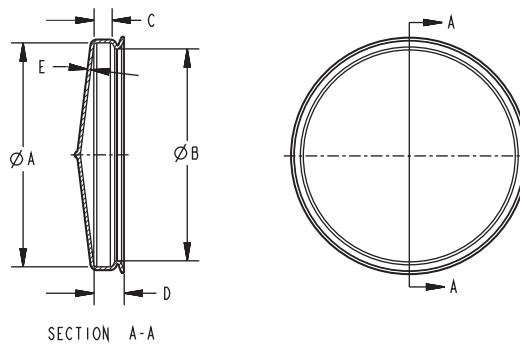
Applications

- Protection during storage
- Finishing masks
- Dust and moisture barriers
- Shipping covers



Snap Ring Flange Cover

Series Number	Inside Diameter "A"		Inside Diameter "B"		Inside Length "C"		Inside Length "D"		Nominal Wall Thickness "E"	
	Inches	mm	Inches	mm	Inches	mm	Inches	mm	Inches	mm
									± .010	± 0.25
SR-0900	0.900	22.86	0.775	19.69	0.375	9.53	0.625	15.88	0.060	1.52
SR-1025	1.025	26.04	0.900	22.86	0.375	9.53	0.625	15.88	0.060	1.52
SR-1150	1.150	29.21	1.025	26.04	0.375	9.53	0.625	15.88	0.060	1.52
SR-1525	1.525	38.74	1.405	35.69	0.375	9.53	0.625	15.88	0.060	1.52
SR-1650	1.650	41.91	1.525	38.74	0.375	9.53	0.625	15.88	0.060	1.52
SR-1900	1.900	48.26	1.650	41.91	0.375	9.53	0.625	15.88	0.060	1.52
SR-2025	2.025	51.44	1.825	46.36	0.375	9.53	0.625	15.88	0.060	1.52
SR-2150	2.150	54.61	1.900	48.26	0.375	9.53	0.625	15.88	0.060	1.52
SR-2400	2.400	60.96	2.150	54.61	0.375	9.53	0.625	15.88	0.060	1.52
SR-2650	2.650	67.31	2.400	60.96	0.375	9.53	0.625	15.88	0.060	1.52
SR-2900	2.900	73.66	2.650	67.31	0.375	9.53	0.625	15.88	0.070	1.78
SR-3125	3.125	79.38	2.900	73.66	0.375	9.53	0.625	15.88	0.070	1.78
SR-3400	3.400	86.36	3.150	80.01	0.375	9.53	0.625	15.88	0.070	1.78
SR-3650	3.650	92.71	3.400	86.36	0.375	9.53	0.625	15.88	0.070	1.78
SR-3900	3.900	99.06	3.650	92.71	0.375	9.53	0.625	15.88	0.070	1.78
SR-4150	4.150	105.41	3.900	99.06	0.375	9.53	0.625	15.88	0.070	1.78
SR-4400	4.400	111.76	4.150	105.41	0.375	9.53	0.625	15.88	0.070	1.78
SR-4650	4.650	118.11	4.400	111.76	0.375	9.53	0.625	15.88	0.070	1.78
SR-4900	4.900	124.46	4.650	118.11	0.375	9.53	0.625	15.88	0.070	1.78
SR-5150	5.150	130.81	4.900	124.46	0.375	9.53	0.625	15.88	0.070	1.78
SR-5400	5.400	137.16	5.150	130.81	0.375	9.53	0.625	15.88	0.070	1.78
SR-5625	5.625	142.88	5.400	137.16	0.375	9.53	0.625	15.88	0.070	1.78
SR-5900	5.900	149.86	5.625	142.88	0.513	13.03	0.781	19.84	0.080	2.03
SR-6150	6.150	156.21	5.900	149.86	0.513	13.03	0.781	19.84	0.080	2.03
SR-6900	6.900	175.26	6.650	168.91	0.513	13.03	0.781	19.84	0.080	2.03
SR-7125	7.125	180.98	6.900	175.26	0.513	13.03	0.781	19.84	0.080	2.03
SR-7400	7.400	187.96	7.125	180.98	0.513	13.03	0.781	19.84	0.080	2.03
SR-7650	7.650	194.31	7.400	187.96	0.513	13.03	0.781	19.84	0.080	2.03
SR-8150	8.150	207.01	7.900	200.66	0.513	13.03	0.781	19.84	0.090	2.29
SR-8400	8.400	213.36	8.150	207.01	0.513	13.03	0.781	19.84	0.090	2.29
SR-8650	8.650	219.71	8.400	213.36	0.513	13.03	0.781	19.84	0.090	2.29
SR-8900	8.900	226.06	8.650	219.71	0.513	13.03	0.890	22.61	0.090	2.29
SR-9400	9.400	238.76	9.150	232.41	0.513	13.03	0.890	22.61	0.090	2.29
SR-9650	9.650	245.11	9.400	238.76	0.513	13.03	0.890	22.61	0.090	2.29
SR-9900	9.900	251.46	9.650	245.11	0.513	13.03	0.890	22.61	0.090	2.29
SR-10150	10.150	257.81	9.900	251.46	0.513	13.03	0.890	22.61	0.090	2.29
SR-10400	10.400	264.16	10.150	257.81	0.513	13.03	0.890	22.61	0.100	2.54
SR-10900	10.900	276.86	10.650	270.51	0.513	13.03	0.890	22.61	0.100	2.54
SR-11900	11.900	302.26	11.650	295.91	0.513	13.03	1.000	25.40	0.100	2.54
SR-12150	12.150	308.61	11.900	302.26	0.513	13.03	1.000	25.40	0.100	2.54



ASA Flange Covers

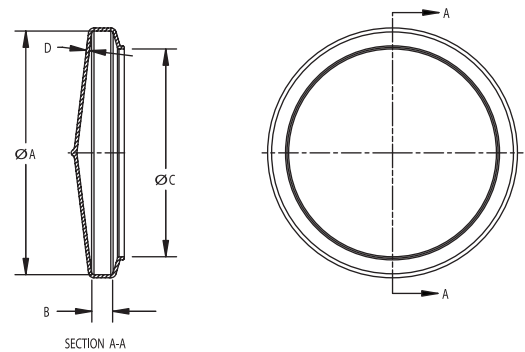
A unique design protects critical flange faces, preventing interior damage and contamination. Covers fit most American Standard Association, Navy and Military sizes. Our flexible vinyl flange covers won't warp, swell, tear or split.

Product Features

- Resists weather, moisture and chemicals
- Cushions against abrasive contacts

Applications

- Flanges and joints
- Valves, vessels, pipes



ASA Flange Covers



Steel Flanges ASA B16.5 1957

Nominal Pipe Size	150 Lb. Flange Cover Number	300 Lb. Flange Cover Number	400 Lb. Flange Cover Number	600 Lb. Flange Cover Number
1/2"	350-6	375-8	375-8	375-8
3/4"	387-8	462-9	462-9	462-9
1"	425-7	487-10	487-10	487-10
1 1/4"	462-9	525-12	525-12	525-12
1 1/2"	500-9	612-13	612-13	612-13
2"	600-10	650-14	650-14	650-14
2 1/2"	700-12	750-14		
3"	750-14	825-19	825-19	825-19
4"	900-15	1000-20	1000-20	1000-20
5"	1000-14			
6"	1100-16	1250-22		
8"	1350-17			

Series Number	Inside Diameter "A"		Inside Length "B"		Inside Diameter "C"		Wall Thickness "D"	
	Inches	mm	Inches	mm	Inches	mm	Inches	mm
350-6	3.480	88.39	0.400	10.16	2.485	63.12	0.060	1.52
375-8	3.750	95.25	0.500	12.70	2.750	69.85	0.060	1.52
387-8	3.870	98.30	0.540	13.72	2.860	72.64	0.060	1.52
425-7	4.250	107.95	0.460	11.68	3.260	82.80	0.065	1.65
462-9	4.660	118.36	0.500	12.70	3.620	91.95	0.065	1.65
487-10	4.870	123.70	0.680	17.27	3.900	99.06	0.065	1.65
500-9	5.000	127.00	0.620	15.75	4.000	101.60	0.065	1.65
525-12	5.250	133.35	0.760	19.30	4.250	107.95	0.065	1.65
600-10	6.000	152.40	0.675	17.15	4.500	114.30	0.065	1.65
612-13	6.120	155.45	0.825	20.96	5.110	129.79	0.065	1.65
650-14	6.500	165.10	0.900	22.86	5.500	139.70	0.065	1.65
700-12	7.000	177.80	0.800	20.32	6.000	152.40	0.065	1.65
750-14	7.500	190.50	0.900	22.86	6.500	165.10	0.065	1.65
825-19	8.250	209.55	1.300	33.02	7.200	182.88	0.065	1.65
900-15	9.000	228.60	1.000	25.40	8.030	203.96	0.065	1.65
1000-14	10.030	254.76	0.875	22.23	9.000	228.60	0.065	1.65
1000-20	10.030	254.76	0.925	23.50	9.000	228.60	0.065	1.65
1075-24	10.750	273.05	1.500	38.10	9.730	247.14	0.065	1.65
1100-16	11.000	279.40	1.000	25.40	10.050	255.27	0.065	1.65
1250-22	12.500	317.50	1.440	36.58	11.500	292.10	0.065	1.65
1350-17	13.500	342.90	1.000	25.40	12.500	317.50	0.065	1.65

Flange Covers



With a snug fit, this flange cover design conforms to a wide variety of flanged and beaded tubes, allowing for a quick and simple application. Flange Covers are reusable and won't crack or split.

Product Features

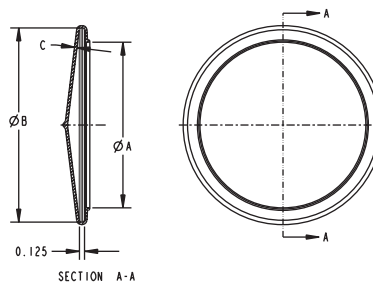
- Fits most standard joints and flared tubing
- Resists weather, moisture and chemicals

Applications

- Shipping and storage caps
- Finishing masks
- Dust and moisture barriers

Flange Covers

Series Number	Inside Diameter "A"		Inside Diameter "B"		Wall Thickness "C"	
	Inches	mm	Inches	mm	Inches	mm
FC-068	0.680	17.27	1.310	33.27	0.040	1.02
FC-093	0.930	23.62	1.550	39.37	0.040	1.02
FC-100	1.000	25.40	1.620	41.15	0.040	1.02
FC-131	1.310	33.27	1.930	49.02	0.040	1.02
FC-150	1.500	38.10	2.195	55.75	0.040	1.02
FC-200	2.000	50.80	2.695	68.45	0.040	1.02
FC-218	2.180	55.37	2.860	72.64	0.040	1.02
FC-250	2.500	63.50	3.180	80.77	0.060	1.52
FC-293	2.930	74.42	3.560	90.42	0.060	1.52
FC-300	3.000	76.20	3.600	91.44	0.060	1.52
FC-350	3.500	88.90	4.155	105.54	0.060	1.52
FC-400	4.000	101.60	4.690	119.13	0.060	1.52
FC-425	4.250	107.95	4.940	125.48	0.060	1.52
FC-450	4.500	114.30	5.190	131.83	0.060	1.52
FC-475	4.750	120.65	5.440	138.18	0.060	1.52
FC-500	5.000	127.00	5.690	144.53	0.060	1.52
FC-525	5.250	133.35	5.940	150.88	0.060	1.52
FC-550	5.500	139.70	6.190	157.23	0.060	1.52
FC-600	6.000	152.40	6.690	169.93	0.060	1.52
FC-650	6.500	165.10	7.190	182.63	0.060	1.52
FC-675	6.750	171.45	7.437	188.90	0.070	1.78
FC-750	7.500	190.50	8.187	207.95	0.070	1.78





Hose Guards (Bend Restrictors)

Bend Restrictors provide stress relief for hoses. The flared end design has a beaded locking feature that provides a secure fit over the coupling, and offers relief from strain. Either style prevents kinks in the hose line at the connection point saving wear and tear caused by the stress from twisting or bending.



Product Features

- Two styles
 - Flared end
 - Straight sleeve
- Large variety of color choices
- Wide range of sizes
- Can be imprinted, punched, or sliced to facilitate branding

Applications

- Garden hoses
- Pneumatic hoses
- Hydraulic hoses
- Pressure washer hoses

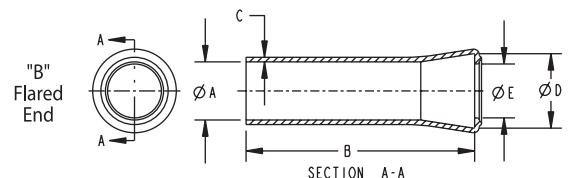
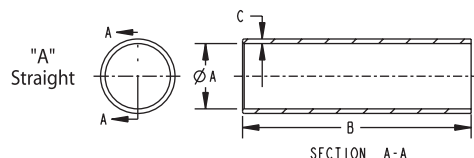
(A) Straight

Inside Diameter "A"		Maximum Inside Length "B"		Nominal Wall Thickness "C"	
Inches	mm	Inches	mm	Inches	mm
		± .062	± 1.57	± .010	± .25
0.562	14.27	5.750	146.05	0.070	1.78
0.640	16.26	5.750	146.05	0.075	1.91
0.687	17.45	5.750	146.05	0.070	1.78
0.750	19.05	5.750	146.05	0.070	1.78
0.937	23.80	23.500	596.90	0.075	1.91
1.062	26.97	5.750	146.05	0.075	1.91

(B) Flared End

Inside Diameter "A"		Inside Length "B"				Inside Diameter "D"		Opening Diameter * "E"		Nominal Wall Thickness "C"	
Inches	mm	Typical		Maximum		Inches	mm	Inches	mm	Inches	mm
		Inches	mm	Inches	mm						
		± .062	± 1.57	± .062	± 1.57			In. ± .040	mm ± 1.02	In. ± .010	mm ± .25
0.700	17.78	3.500	88.90	5.000	127.00	0.935	23.75	0.692	17.58	0.060	1.52
0.750	19.05	3.500	88.90	3.500	88.90	1.117	28.37	0.692	17.58	0.060	1.52
0.775	19.69	3.500	88.90	5.000	127.00	1.010	25.65	0.770	19.56	0.060	1.52
0.812	20.62	3.500	88.90	5.000	127.00	1.140	28.96	0.830	21.08	0.070	1.78
0.890	22.61	3.500	88.90	5.000	127.00	1.140	28.96	0.830	21.08	0.070	1.78
0.952	24.18	3.500	88.90	5.000	127.00	1.220	30.99	0.920	23.37	0.070	1.78
1.125	28.58	3.500	88.90	3.500	88.90	1.325	33.66	1.130	28.70	0.065	1.65

*Opening Diameter is dependent on Inside Length and Wall Thickness. Chart value shown is for a typical 3.500 inside length with nominal wall thickness "C".





Net Guard

Industrial-strength netting is an economical way to reduce the occurrence of damaged parts during shipping, handling and storage. Netting stretches on quickly and easily, while the elastic material hugs against parts preventing nicks, abrasions and breakage. Web thickness, strand spacing, diameter, elasticity, color and length are among your selection options.

Net-Guard I - Standard

Diameter		Length				Color
		Mini Coil		Maxi Coil		
Inches	mm	Feet	Meters	Feet	Meters	
.250 - .500	6.35-12.70	650	198.12	3,000	914.40	Yellow
.500-1.000	12.70-25.40	550	167.64	2,750	838.20	Blue
1.000-1.500	25.40-38.10	340	103.63	1,700	518.16	Red
1.500-2.000	38.10-50.80	180	54.86	900	274.32	Black
2.000 - 2.500	50.80 - 63.50	160	48.77	800	243.84	White
2.500 - 3.000	63.50 - 76.20	120	36.58	600	182.88	Yellow
3.000 - 4.000	76.20-101.60	90	27.43	450	137.16	Green
4.000 - 5.000	101.60-127.00	70	21.34	350	106.68	Orange
5.000 - 6.000	127.00-152.40	60	18.29	300	91.44	Brown
6.000 - 7.000	152.40 -177.80	50	15.24	250	76.20	Blue
7.000 - 9.000	177.80 - 228.60	40	12.19	200	60.96	Natural

Note: Web Thickness is .065" (1.65 mm)

Net-Guard II - Heavy Weight

Diameter		Length		Color
		Mini Coil		
Inches	mm	Feet	Meters	
.500	12.70	500	152.40	White
.750	19.05	285	86.87	Orange
1.000	25.40	235	71.63	Black
1.250	31.75	165	50.29	Green
1.500	38.10	165	50.29	Yellow
1.750	44.45	135	41.15	Gray
2.000	50.80	110	33.53	Blue
2.500	63.50	90	27.43	Red
3.000	76.20	85	25.91	Purple

Note: Web Thickness is .080" (2.03 mm)

Product Features

- Available in two complete lines:
 - Standard
 - Heavy-weight
- More economical than paper, cardboard and Styrofoam packaging
- Lightweight and easy to use
- Material is non-conductive, rustproof and UV resistant
- Net Guard I expands to approximately twice its diameter for added flexibility

Applications

- Protects precision components and parts
- Secures irregular shapes



About Finishing

At StockCap, our goal is to determine the best masking product for your application. In most cases, there will be many choices depending on the circumstances involved in your process.

1. What is the cure temperature of the process and for how long?

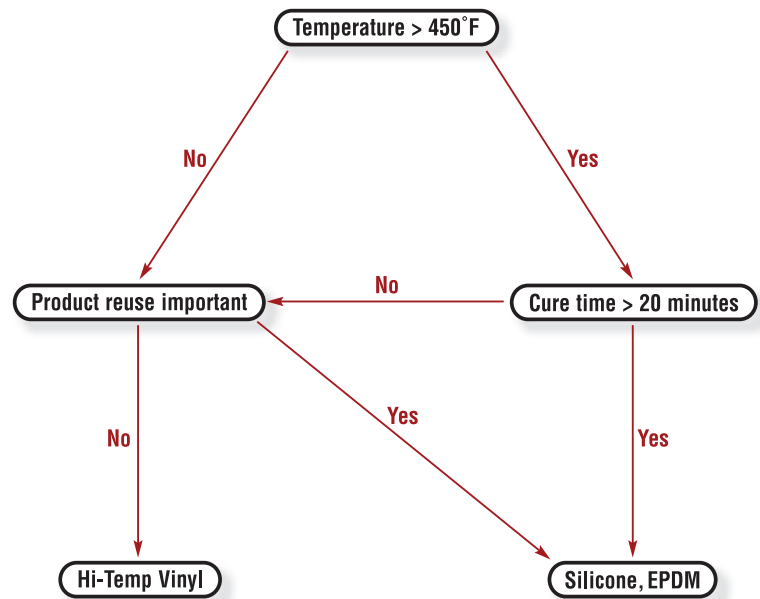
Time and temperature are the primary factors in determining what material to select. We typically recommend testing the lower cost alternatives before moving on to higher-grade products. With molded parts, the vinyl materials are significantly cheaper than their rubber counterparts.

2. Is re-usability important?

The higher costs for silicone and EPDM parts may be offset by the fact that they can be used multiple times in many processes. In contrast, vinyl parts are typically only used once.

3. Are mold release issues a concern?

Silicone rubber is not the same as the lubricant silicone. Silicone caps and plugs have proven to be successful masks in virtually every coating processes. Vinyl caps do typically utilize mold releases that may affect a powder coating or e-coating process. For this reason, we often put vinyl caps through an industrial washing process.





Finishing Materials and Applications

Finishing Masks

Process / Material	Standard Vinyl Pages 4 - 16	Hi-Temp Vinyl Pages 4 - 16	EPDM Pages 40 - 44	Silicone Pages 41 - 48, 52
Maximum Temperature	225°F (107°C)	446°F (230°C)	475°F (246°C)	600°F (316°C)
Painting - Air Dry	Lowest Cost Alternative	Costly Alternative	Costly Alternative	Costly Alternative
Painting with Bake	Will withstand some low-bake processes	Works in most process at significantly less cost than Silicone or EPDM.	Typically only used if HT Vinyl does not perform	Costly Alternative
Powder Coating	Does not work.	Works in some processes especially when using large masks. One time use. Wash caps to remove any mold release.	Works in most processes but will get fewer passes than with silicone products.	Works in nearly every process. Get multiple passes as powder is easily cracked off.
E-Coating	Typically will not withstand bake temperatures.	Low cost alternative if it can withstand the bake. Specify industrial wash to eliminate mold release.	Works in most processes but will get fewer passes than with silicone products.	Works in nearly every process. Multiple passes are possible as the coating is easily removed.
Plating	Lowest Cost Alternative, but some chemicals may break them down.	Not necessary.	Great Chemical Resistance makes these a safe choice for most plating processes, but they are typically 2x the price of vinyl.	Costly alternative.

NOTE: StockCap can also mold products in Nitrile, Natural and Neoprene rubber.

Tapes / Discs / Cutom Die Cuts - Pages 49 - 51

Process	Material		
Painting with Bake up to 325°F	Hi-Temp Crepe 325°F (163°C) for 20 minutes.		
Powder Coating	2 mil. Green Polyester resists up to 400°F (204°C) for 20 minutes. Industry Standard.	1 mil. Polymimide Kapton™ resists up to 500°F (260°C) for 20 minutes.	Non-Adhesive, Self-Fusing Silicone Tape resists up to 500°F (260°C).
E-Coating	2 mil. Green Polyester resists up to 400°F (204°C) for 20 minutes. Industry Standard.		
Plating	Vinyl Platers Tape.		

EPDM Caps

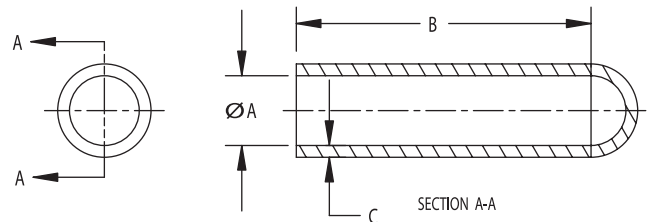
Providing superior chemical resistance, EPDM Caps are the ideal choice for caps that will be exposed to a harsh environment.

Product Features

- Withstands temperatures to 475°F (246°C)
- Custom colors available

Applications

- Ideal for plating applications
- Masking and industrial applications requiring high chemical and heat resistance



EPDM Caps

Part Number	Inside Diameter "A"		Inside Length "B"		Wall Thickness "C"	
	Inches	mm	Inches	mm	Inches	mm
395294	0.062	1.57	0.750	19.05	0.060	1.52
878371	0.070	1.78	1.000	25.40	0.060	1.52
488677	0.093	2.36	0.750	19.05	0.060	1.52
381905	0.100	2.54	0.500	12.70	0.060	1.52
019752	0.109	2.77	0.750	19.05	0.060	1.52
743668	0.125	3.18	0.500	12.70	0.060	1.52
036893	0.125	3.18	1.000	25.40	0.060	1.52
310745	0.140	3.56	0.500	12.70	0.060	1.52
960788	0.140	3.56	1.000	25.40	0.053	1.35
150729	0.148	3.76	1.000	25.40	0.049	1.24
426128	0.156	3.96	0.500	12.70	0.060	1.52
001564	0.156	3.96	1.000	25.40	0.060	1.52
159708	0.172	4.37	0.500	12.70	0.060	1.52
342132	0.172	4.37	1.000	25.40	0.060	1.52
855838	0.187	4.75	0.500	12.70	0.060	1.52
386187	0.187	4.75	1.000	25.40	0.060	1.52
133005	0.218	5.54	1.000	25.40	0.060	1.52
064178	0.223	5.66	1.000	25.40	0.060	1.52
393866	0.234	5.94	1.000	25.40	0.060	1.52
633127	0.234	5.94	1.500	38.10	0.060	1.52
686163	0.250	6.35	1.000	25.40	0.060	1.52
097400	0.281	7.14	1.000	25.40	0.060	1.52
648560	0.295	7.49	1.000	25.40	0.060	1.52
295105	0.295	7.49	1.500	38.10	0.060	1.52
995137	0.313	7.95	1.000	25.40	0.060	1.52
349180	0.340	8.64	1.000	25.40	0.060	1.52
965590	0.355	9.02	1.500	38.10	0.060	1.52

EPDM Caps Continued

Part Number	Inside Diameter "A"		Inside Length "B"		Wall Thickness "C"	
	Inches	mm	Inches	mm	Inches	mm
053949	0.375	9.53	1.000	25.40	0.060	1.52
025310	0.375	9.53	1.500	38.10	0.051	1.30
372904	0.406	10.31	1.000	25.40	0.060	1.52
112359	0.437	11.10	1.000	25.40	0.060	1.52
315110	0.456	11.58	1.500	38.10	0.060	1.52
590420	0.468	11.89	1.000	25.40	0.060	1.52
480150	0.480	12.19	1.500	38.10	0.060	1.52
318896	0.500	12.70	1.500	38.10	0.060	1.52
318897	0.535	13.59	1.500	38.10	0.060	1.52
757703	0.562	14.27	1.500	38.10	0.060	1.52
757704	0.600	15.24	1.500	38.10	0.060	1.52
218089	0.625	15.88	1.500	38.10	0.060	1.52
191065	0.687	17.45	1.500	38.10	0.060	1.52
009033	0.750	19.05	1.500	38.10	0.060	1.52
057831	0.812	20.62	1.500	38.10	0.060	1.52
090370	0.875	22.23	1.500	38.10	0.060	1.52
341501	0.937	23.80	1.500	38.10	0.060	1.52
292837	1.000	25.40	1.500	38.10	0.060	1.52
270542	1.062	26.97	1.500	38.10	0.060	1.52
292840	1.125	28.58	1.500	38.10	0.060	1.52
161976	1.187	30.15	1.500	38.10	0.060	1.52
422425	1.250	31.75	1.500	38.10	0.060	1.52
995754	1.500	38.10	1.500	38.10	0.060	1.52
760051	1.750	44.45	2.000	50.80	0.060	1.52
322048	1.875	47.63	2.000	50.80	0.060	1.52
292845	2.000	50.80	2.000	50.80	0.060	1.52





Silicone Caps

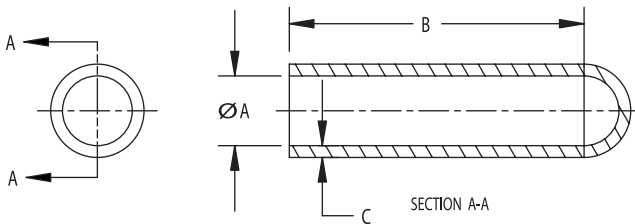
Silicone caps will withstand multiple passes through most coating processes and are reusable, which increases their value over single use materials.

Product Features

- Resists temperatures up to 600°F (316°C)
- No risk of contamination to paint line
- Custom colors available

Applications

- Specifically designed for powder coating and E-coating applications



Silicone Caps

Part Number	Inside Diameter "A"		Inside Length "B"		Wall Thickness "C"	
	Inches	mm	Inches	mm	Inches	mm
494718	0.062	1.57	0.750	19.05	0.060	1.52
477088	0.070	1.78	1.000	25.40	0.060	1.52
394105	0.093	2.36	0.750	19.05	0.060	1.52
485190	0.100	2.54	0.500	12.70	0.060	1.52
668515	0.109	2.77	0.750	19.05	0.060	1.52
423708	0.125	3.18	0.500	12.70	0.060	1.52
646346	0.125	3.18	1.000	25.40	0.060	1.52
536508	0.140	3.56	0.500	12.70	0.060	1.52
478875	0.140	3.56	1.000	25.40	0.053	1.35
128851	0.148	3.76	1.000	25.40	0.060	1.52
613332	0.156	3.96	0.500	12.70	0.060	1.52
053646	0.156	3.96	1.000	25.40	0.060	1.52
671966	0.172	4.37	0.500	12.70	0.060	1.52
405160	0.172	4.37	1.000	25.40	0.060	1.52
701893	0.187	4.75	0.500	12.70	0.060	1.52
656937	0.187	4.75	1.000	25.40	0.060	1.52
447744	0.218	5.54	1.000	25.40	0.060	1.52
799746	0.223	5.66	1.000	25.40	0.060	1.52
151786	0.234	5.94	1.000	25.40	0.060	1.52
991235	0.234	5.94	1.500	38.10	0.060	1.52
836188	0.250	6.35	1.000	25.40	0.060	1.52
661069	0.281	7.14	1.000	25.40	0.060	1.52
956331	0.295	7.49	1.000	25.40	0.060	1.52
359693	0.295	7.49	1.500	38.10	0.060	1.52
968368	0.313	7.95	1.000	25.40	0.060	1.52
374736	0.340	8.64	1.000	25.40	0.060	1.52
628632	0.355	9.02	1.500	38.10	0.060	1.52

Silicone Caps Continued

Part Number	Inside Diameter "A"		Inside Length "B"		Wall Thickness "C"	
	Inches	mm	Inches	mm	Inches	mm
510770	0.375	9.53	1.000	25.40	0.060	1.52
165692	0.375	9.53	1.500	38.10	0.051	1.30
538165	0.406	10.31	1.000	25.40	0.060	1.52
668528	0.437	11.10	1.000	25.40	0.060	1.52
425710	0.456	11.58	1.500	38.10	0.060	1.52
262997	0.468	11.89	1.000	25.40	0.060	1.52
866589	0.480	12.19	1.500	38.10	0.060	1.52
256666	0.500	12.70	1.500	38.10	0.060	1.52
772393	0.535	13.59	1.500	38.10	0.060	1.52
024965	0.562	14.27	1.500	38.10	0.060	1.52
054611	0.600	15.24	1.500	38.10	0.060	1.52
073243	0.625	15.88	1.500	38.10	0.060	1.52
290194	0.687	17.45	1.500	38.10	0.060	1.52
862182	0.750	19.05	1.500	38.10	0.060	1.52
314449	0.812	20.62	1.500	38.10	0.060	1.52
530973	0.875	22.23	1.500	38.10	0.060	1.52
657623	0.937	23.80	1.500	38.10	0.060	1.52
821403	1.000	25.40	1.500	38.10	0.060	1.52
368503	1.062	26.97	1.500	38.10	0.060	1.52
909192	1.125	28.58	1.500	38.10	0.060	1.52
562238	1.187	30.15	1.500	38.10	0.060	1.52
208520	1.250	31.75	1.500	38.10	0.060	1.52
499797	1.500	38.10	1.500	38.10	0.060	1.52
700132	1.750	44.45	2.000	50.80	0.060	1.52
314765	1.875	47.63	2.000	50.80	0.060	1.52
131998	2.000	50.80	2.000	50.80	0.060	1.52



EPDM Tapered Plugs

The tapered design of these plugs allows one size to fit multiple ports. Soft rubber material conforms to provide a tight seal. In some powder coating processes, EPDM Tapered Plugs have been used as a low-cost alternative to silicone plugs.



Product Features

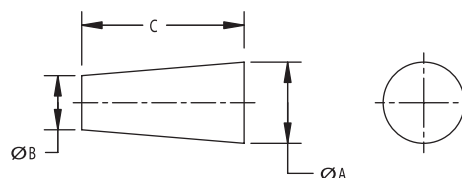
- Superior chemical resistance
- Withstands temperatures up to 475°F (246°C)
- Will not contaminate a paint line
- Custom colors available

Applications

- Ideal for plating and anodizing applications

EPDM Tapered Plugs

Part Number	Major Diameter "A"		Minor Diameter "B"		Plug Length "C"	
	Inches	mm	Inches	mm	Inches	mm
974970	0.100	2.54	0.031	0.79	1.000	25.40
595788	0.125	3.18	0.031	0.79	0.625	15.88
912074	0.125	3.18	0.062	1.57	0.625	15.88
146069	0.187	4.75	0.062	1.57	0.750	19.05
683986	0.200	5.08	0.062	1.57	0.750	19.05
105673	0.250	6.35	0.125	3.18	0.750	19.05
631765	0.250	6.35	0.125	3.18	1.000	25.40
952038	0.344	8.74	0.187	4.75	0.625	15.88
322960	0.344	8.74	0.187	4.75	1.000	25.40
103389	0.375	9.53	0.250	6.35	0.750	19.05
316230	0.375	9.53	0.125	3.18	1.250	31.75
316229	0.437	11.10	0.250	6.35	1.000	25.40
033962	0.472	11.99	0.354	8.99	0.748	19.00
079319	0.500	12.70	0.125	3.18	2.000	50.80
843878	0.500	12.70	0.313	7.95	0.813	20.65
418656	0.594	15.09	0.406	10.31	1.000	25.40
594413	0.656	16.66	0.500	12.70	1.000	25.40
430494	0.750	19.05	0.563	14.30	1.000	25.40
316233	0.812	20.62	0.625	15.88	1.000	25.40
800065	0.938	23.83	0.718	18.24	1.000	25.40
361234	1.024	26.01	0.787	19.99	1.000	25.40
361235	1.063	27.00	0.905	22.99	1.000	25.40
361236	1.260	32.00	1.024	26.01	1.000	25.40
361237	1.338	33.99	1.063	27.00	1.000	25.40



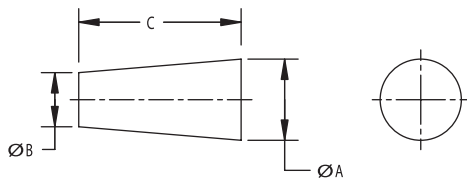


Silicone Tapered Plugs

The tapered design of these plugs allows one size to fit multiple ports. Soft rubber material conforms to provide a tight seal. Silicone Tapered Plugs will withstand multiple passes through most coating processes.

Silicone Tapered Plugs

Part Number	Major Diameter "A"		Minor Diameter "B"		Plug Length "C"	
	Inches	mm	Inches	mm	Inches	mm
729043	0.100	2.54	0.031	0.79	1.000	25.40
001215	0.125	3.18	0.031	0.79	0.625	15.88
098481	0.125	3.18	0.062	1.57	0.625	15.88
573688	0.187	4.75	0.062	1.57	0.750	19.05
190676	0.200	5.08	0.062	1.57	0.750	19.05
632740	0.250	6.35	0.125	3.18	0.750	19.05
505198	0.250	6.35	0.125	3.18	1.000	25.40
826154	0.344	8.74	0.187	4.75	0.625	15.88
600486	0.344	8.74	0.187	4.75	1.000	25.40
390292	0.375	9.53	0.250	6.35	0.750	19.05
649566	0.375	9.53	0.125	3.18	1.250	31.75
337820	0.437	11.10	0.250	6.35	1.000	25.40
443051	0.472	11.99	0.354	8.99	0.748	19.00
046817	0.500	12.70	0.125	3.18	2.000	50.80
734506	0.500	12.70	0.313	7.95	0.812	20.62
602762	0.594	15.09	0.406	10.31	1.000	25.40
853325	0.656	16.66	0.500	12.70	1.000	25.40
440972	0.750	19.05	0.563	14.30	1.000	25.40
255081	0.812	20.62	0.625	15.88	1.000	25.40
498005	0.938	23.83	0.718	18.24	1.000	25.40
833210	1.024	26.01	0.787	19.99	1.000	25.40
259356	1.063	27.00	0.905	22.99	1.000	25.40
903694	1.260	32.00	1.024	26.01	1.000	25.40
578430	1.338	33.99	1.063	27.00	1.000	25.40



Product Features

- Withstands temperatures up to 600°F (316°C)
- Will not contaminate a paint line
- Custom colors available

Applications

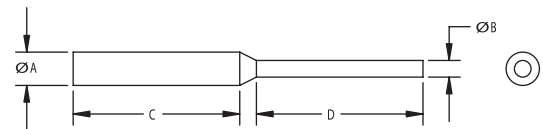
- Specifically designed for powder coating and E-coating applications





EPDM Pull Plugs

These plugs have been designed to provide a tight seal on both ends of threaded and non-threaded through holes. Choose a diameter slightly larger than the hole to mask, allowing the plug to stretch when pulled through the hole by its tab and then relax to provide an air-tight seal.



EPDM Pull Plugs

Product Features

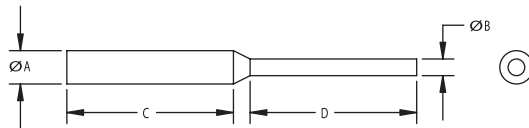
- Superior chemical resistance
- Withstands temperatures up to 475°F (246°C)
- Custom colors available

Applications

- Ideal for plating and anodizing applications

Part Number	Major Diameter Plug "A"		Minor Diameter Tab "B"		Length			
	Inches	mm	Inches	mm	Plug "C"		Tab "D"	
659080	0.067	1.70	0.047	1.19	0.625	15.88	0.625	15.88
409314	0.093	2.36	0.062	1.57	0.625	15.88	0.625	15.88
840719	0.109	2.77	0.062	1.57	0.625	15.88	0.625	15.88
022916	0.118	3.00	0.082	2.08	1.000	25.40	1.000	25.40
566961	0.125	3.18	0.082	2.08	0.625	15.88	0.625	15.88
649516	0.130	3.30	0.082	2.08	0.625	15.88	0.625	15.88
840720	0.140	3.56	0.082	2.08	0.625	15.88	0.625	15.88
074309	0.156	3.96	0.082	2.08	0.625	15.88	0.625	15.88
606654	0.158	4.01	0.093	2.36	1.000	25.40	1.000	25.40
865593	0.162	4.11	0.093	2.36	0.625	15.88	0.625	15.88
210218	0.187	4.75	0.110	2.79	0.625	15.88	0.625	15.88
659449	0.197	5.00	0.110	2.79	1.000	25.40	1.000	25.40
063940	0.218	5.54	0.110	2.79	1.000	25.40	1.000	25.40
020314	0.225	5.72	0.125	3.18	1.000	25.40	1.000	25.40
705663	0.257	6.53	0.130	3.30	1.000	25.40	1.000	25.40
866513	0.275	6.99	0.130	3.30	0.950	24.13	0.950	24.13
847265	0.281	7.14	0.138	3.51	1.000	25.40	1.000	25.40
095171	0.312	7.92	0.130	3.30	1.000	25.40	1.000	25.40
725300	0.335	8.51	0.157	3.99	1.000	25.40	1.000	25.40
843774	0.350	8.89	0.157	3.99	0.900	22.86	0.900	22.86
493482	0.388	9.86	0.157	3.99	1.000	25.40	1.000	25.40
315066	0.400	10.16	0.157	3.99	1.000	25.40	1.000	25.40
341200	0.414	10.52	0.157	3.99	1.000	25.40	1.000	25.40
937005	0.445	11.30	0.157	3.99	1.000	25.40	1.000	25.40
914604	0.468	11.89	0.250	6.35	1.000	25.40	1.000	25.40
858195	0.510	12.95	0.250	6.35	1.000	25.40	1.000	25.40
744765	0.530	13.46	0.250	6.35	1.000	25.40	1.000	25.40
644663	0.612	15.54	0.250	6.35	1.000	25.40	1.000	25.40
703829	0.640	16.26	0.375	9.53	1.000	25.40	1.000	25.40
589333	0.700	17.78	0.375	9.53	1.000	25.40	1.000	25.40
686017	0.729	18.52	0.315	8.00	1.000	25.40	1.000	25.40
589333	0.770	19.56	0.375	9.53	1.000	25.40	1.000	25.40
441029	0.809	20.55	0.315	8.00	1.000	25.40	1.000	25.40
713613	0.896	22.76	0.375	9.53	1.000	25.40	1.000	25.40
772179	1.020	25.91	0.375	9.53	1.000	25.40	1.000	25.40





Silicone Pull Plugs

Part Number	Major Diameter Plug "A"		Minor Diameter Tab "B"		Length			
	Inches	mm	Inches	mm	Plug "C"		Tab "D"	
218100	0.067	1.70	0.047	1.19	0.625	15.88	0.625	15.88
218103	0.093	2.36	0.062	1.57	0.625	15.88	0.625	15.88
218104	0.109	2.77	0.062	1.57	0.625	15.88	0.625	15.88
564030	0.118	3.00	0.082	2.08	1.000	25.40	1.000	25.40
218105	0.125	3.18	0.082	2.08	0.625	15.88	0.625	15.88
218106	0.130	3.30	0.082	2.08	0.625	15.88	0.625	15.88
218107	0.140	3.56	0.082	2.08	0.625	15.88	0.625	15.88
218108	0.156	3.96	0.082	2.08	0.625	15.88	0.625	15.88
673612	0.158	4.01	0.093	2.36	1.000	25.40	1.000	25.40
218109	0.162	4.11	0.093	2.36	0.625	15.88	0.625	15.88
218210	0.187	4.75	0.110	2.79	0.625	15.88	0.625	15.88
415899	0.197	5.00	0.110	2.79	1.000	25.40	1.000	25.40
218110	0.218	5.54	0.110	2.79	1.000	25.40	1.000	25.40
218111	0.225	5.72	0.125	3.18	1.000	25.40	1.000	25.40
218211	0.257	6.53	0.130	3.30	1.000	25.40	1.000	25.40
154946	0.275	6.99	0.130	3.30	0.950	24.13	0.950	24.13
340564	0.281	7.14	0.138	3.51	1.000	25.40	1.000	25.40
218114	0.312	7.92	0.130	3.30	1.000	25.40	1.000	25.40
218116	0.335	8.51	0.157	3.99	1.000	25.40	1.000	25.40
138778	0.350	8.89	0.157	3.99	0.900	22.86	0.900	22.86
218118	0.388	9.86	0.157	3.99	1.000	25.40	1.000	25.40
218119	0.400	10.16	0.157	3.99	1.000	25.40	1.000	25.40
218120	0.414	10.52	0.157	3.99	1.000	25.40	1.000	25.40
218122	0.445	11.30	0.157	3.99	1.000	25.40	1.000	25.40
218123	0.468	11.89	0.250	6.35	1.000	25.40	1.000	25.40
218125	0.510	12.95	0.250	6.35	1.000	25.40	1.000	25.40
218126	0.530	13.46	0.250	6.35	1.000	25.40	1.000	25.40
218127	0.612	15.54	0.250	6.35	1.000	25.40	1.000	25.40
218128	0.640	16.26	0.375	9.53	1.000	25.40	1.000	25.40
218129	0.700	17.78	0.375	9.53	1.000	25.40	1.000	25.40
400237	0.729	18.52	0.315	8.00	1.000	25.40	1.000	25.40
228802	0.770	19.56	0.375	9.53	1.000	25.40	1.000	25.40
356703	0.809	20.55	0.315	8.00	1.000	25.40	1.000	25.40
228224	0.896	22.76	0.375	9.53	1.000	25.40	1.000	25.40
995671	1.020	25.91	0.375	9.53	1.000	25.40	1.000	25.40

Silicone Pull Plugs

These plugs have been designed to provide a tight seal on both ends of threaded and non-threaded through holes. Choose a diameter slightly larger than the hole to mask, allowing the plug to stretch when pulled through the hole by its tab and then relax to provide an air-tight seal.

Product Features

- Withstands temperatures up to 600°F (316°C)
- Will not contaminate a paint line
- Custom colors available

Applications

- Specifically designed for powder coating and E-coating applications



Silicone Flangeless Plugs

The Silicone Flangeless Plugs have been designed with finishing needs in mind. Plugs are color-coded to indicate their diameter, however the tapered shape permits one plug to fit several port sizes. Additionally, this plug can be used on threaded ports, and its sturdy tab provides easy removal. The plugs' durability also allows them to be reused creating a cost-effective product protection solution. Please see the note below regarding other materials for flangeless plugs.*

Product Features

- Withstands temperatures up to 600°F (316°C)
- Color-coded
- Reusable
- Available in kits

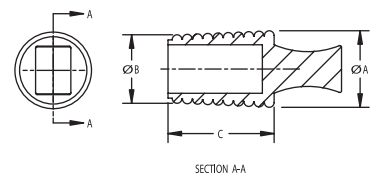
Applications

- Specifically designed for powder coating and E-coating applications



Flangeless Plugs - Silicone

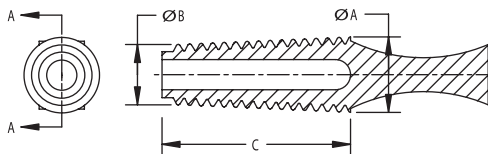
Series Number	Major Diameter "A"		Minor Diameter "B"		Plug Length "C"	
	Inches	mm	Inches	mm	Inches	mm
FLP-60	0.236	6.00	0.157	4.00	1.000	25.40
FLP-80	0.315	8.00	0.236	6.00	1.000	25.40
FLP-100	0.394	10.00	0.315	8.00	1.000	25.40
FLP-120	0.472	12.00	0.394	10.00	1.000	25.40
FLP-140	0.551	14.00	0.472	12.00	1.000	25.40
FLP-160	0.630	16.00	0.551	14.00	1.000	25.40
FLP-180	0.709	18.00	0.630	16.00	1.000	25.40
FLP-200	0.787	20.00	0.709	18.00	1.000	25.40
FLP-225	0.886	22.50	0.787	20.00	1.000	25.40
FLP-240	0.945	24.00	0.886	22.50	1.000	25.40
FLP-260	1.024	26.00	0.945	24.00	1.000	25.40
FLP-280	1.102	28.00	1.024	26.00	1.000	25.40
FLP-286	1.125	28.58	1.000	25.40	1.000	25.40
FLP-318	1.250	31.75	1.125	28.58	1.000	25.40



Flangeless Plugs - PVC

Series Number	Major Diameter "A"		Minor Diameter "B"		Plug Length "C"	
	Inches	mm	Inches	mm	Inches	mm
FLP-10	0.394	10.00	0.315	8.00	0.984	25.00
FLP-18	0.709	18.00	0.630	16.00	0.984	25.00

*Note: Flangeless Plugs can also be manufactured from PVC, but this material is not recommended for applications requiring temperatures greater than 200°F (93°C).



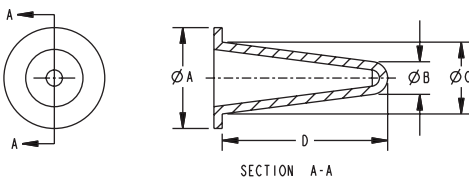


Silicone Flange Plugs

Silicone Flange Plugs are recommended for applications requiring a grounding area mask. The tapered, hollow design allows for easy insertion into threaded or non-threaded holes.

Silicone Flange Plugs

Part Number	Flange Diameter "A"		Minor Outside Diameter "B"		Major Outside Diameter "C"		Plug Length "D"	
	Inches	mm	Inches	mm	Inches	mm	Inches	mm
033535	0.493	12.52	0.099	2.52	0.248	6.30	0.890	22.61
902820	0.489	12.42	0.126	3.20	0.315	8.00	1.020	25.91
552620	0.631	16.03	0.138	3.51	0.335	8.51	0.985	25.02
731321	0.650	16.51	0.178	4.52	0.394	10.01	1.100	27.94
108386	0.631	16.03	0.153	3.89	0.409	10.39	1.100	27.94
272113	0.749	19.03	0.275	6.99	0.550	13.97	1.420	36.07
524540	0.986	25.04	0.394	10.01	0.688	17.48	1.500	38.10
453218	1.000	25.40	0.394	10.01	0.818	20.78	1.930	49.02
429718	1.103	28.02	0.394	10.01	0.768	19.51	2.000	50.80
554048	1.219	30.96	0.394	10.01	0.868	22.05	2.000	50.80



Product Features

- Resists temperatures up to 600°F (316°C)
- Withstands multiple passes through most coating processes
- Will not contaminate a paint line
- Custom colors available

Applications

- Specifically designed for powder coating and E-coating applications



Silicone Washer Plugs

Silicone Washer Plugs are designed for those applications which require a hole to be plugged, and the surrounding surface area to be masked. Typical applications include masking the grounding area around a threaded port and simple powder coating. The opposite side of the plug, the tab, aids for easy removal. This, combined with its reusability feature, makes the Silicone Washer Plug an attractive alternative to discs.

Product Features

- Withstands temperatures up to 600°F (316°C)
- Will not contaminate a paint line
- Custom colors available
- Withstands multiple passes through most coating processes

Applications

- Specifically designed for powder coating and E-coating applications



Silicone Washer Plugs

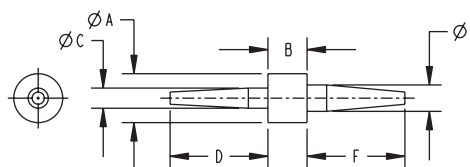
Part Number	Minor Plug Outside Diameter "C"		Major Plug Outside Diameter "E"		Washer Outside Diameter "A"	
	Inches	mm	Inches	mm	Inches	mm
278878	0.103	2.62	0.130	3.30	0.250	6.35
230423	0.103	2.62	0.180	4.57	0.250	6.35
117628	0.103	2.62	0.209	5.31	0.250	6.35
425599	0.103	2.62	0.155	3.94	0.312	7.92
675077	0.103	2.62	0.209	5.31	0.312	7.92
736584	0.103	2.62	0.275	6.99	0.312	7.92
301660	0.130	3.30	0.155	3.94	0.375	9.53
512514	0.130	3.30	0.180	4.57	0.375	9.53
753616	0.130	3.30	0.209	5.31	0.375	9.53
019263	0.130	3.30	0.250	6.35	0.375	9.53
882561	0.130	3.30	0.140	3.56	0.500	12.70
619261	0.130	3.30	0.155	3.94	0.500	12.70
307871	0.130	3.30	0.180	4.57	0.500	12.70
997360	0.130	3.30	0.200	5.08	0.500	12.70
231535	0.130	3.30	0.275	6.99	0.500	12.70
130258	0.130	3.30	0.390	9.91	0.500	12.70
140665	0.130	3.30	0.455	11.56	0.500	12.70
844390	0.180	4.57	0.238	6.05	0.500	12.70
985175	0.218	5.54	0.218	5.54	0.716	18.19
219896	0.275	6.99	0.375	9.53	0.500	12.70
167437	0.375	9.53	0.455	11.56	0.866	22.00
389703	0.375	9.53	0.512	13.00	0.787	19.99
205449	0.551	14.00	0.689	17.50	0.787	19.99

Notes:

Minor Plug Length "D": 0.500 inches (12.70 mm)

Major Plug Length "F": 0.500 inches (12.70 mm)

Washer Length "B": 0.200 inches (5.08 mm)





Ideal for protecting or masking irregular shapes, StockCap tapes come in a variety of materials for almost any process.

Tapes

(A) Hi-Temp Crepe Tape

Recommended for most painting processes, the tape will withstand temperatures up to 325° F (163° C). Additionally, the tape provides precise line definition and is easily removed.

(B) 2 Mil Green Polyester Tape

The industry standard for most powder coating and E-coating applications, this tape has a 1.5 mil silicone adhesive and will withstand temperatures up to 400° F (204° C).

(C) 1 Mil Polyimide Kapton™ Tape

This tape has a 1.5 mil silicone adhesive and can withstand temperatures up to 500° F (260° C). It is recommended for applications requiring extremely high heat resistance including high-temperature powder coating and the masking of printed circuit boards.

(D) Silicone Tape

This non-adhesive self-fusing tape withstands temperatures up to 500° F (260° C). This tape maintains a high tracking resistance because it employs no adhesive coating, offering a non-contaminating surface. Silicone tape is a chemically cross-linked tape that fuses to itself instantly and forms a permanent mass within 24 hours.

(A) Hi-Temp Crepe Tape

Part Number	Width		Length	
	Inches	mm	Yards	Meters
394375	0.236	6.00	60	55.00
422149	0.472	12.00	60	55.00
561756	0.709	18.00	60	55.00
467310	0.945	24.00	60	55.00
851305	1.417	36.00	60	55.00
965762	1.890	48.00	60	55.00

(C) 1 Mil Polyimide Tape - Kapton™

Part Number	Width		Length	
	Inches	mm	Yards	Meters
090037	0.125	3.18	36	32.92
974678	0.250	6.35	36	32.92
845075	0.312	7.92	36	32.92
503013	0.375	9.53	36	32.92
975400	0.500	12.70	36	32.92
804754	0.625	15.88	36	32.92
553310	0.750	19.05	36	32.92
196025	1.000	25.40	36	32.92
329342	1.500	38.10	36	32.92
489592	2.000	50.80	36	32.92
298746	3.000	76.20	36	32.92
535025	4.000	101.60	36	32.92
165556	5.000	127.00	36	32.92
859933	6.000	152.40	36	32.92

(B) 2 Mil Green Polyester Tape

Part Number	Width		Length	
	Inches	mm	Yards	Meters
652964	0.125	3.18	72	65.84
630587	0.250	6.35	72	65.84
692175	0.312	7.92	72	65.84
104564	0.375	9.53	72	65.84
733642	0.500	12.70	72	65.84
217218	0.625	15.88	72	65.84
673795	0.750	19.05	72	65.84
986474	1.000	25.40	72	65.84
225511	1.500	38.10	72	65.84
665420	2.000	50.80	72	65.84
425603	3.000	76.20	72	65.84
021363	4.000	101.60	72	65.84
899244	5.000	127.00	72	65.84
147208	6.000	152.40	72	65.84

(D) Silicone Tape

Part Number	Width		Length		Color
	Inches	mm	Yards	Meters	
036389	1.000	25.40	12	10.97	Red
503576	1.000	25.40	12	10.97	Red
882034	1.000	25.40	12	10.97	Black



Discs

(A) 1 Mil Polyimide Kapton™ Discs

Recommended for applications requiring extremely high heat resistance including high-temperature powder coating and the masking of printed circuit boards. These discs have a 1.5 mil silicone adhesive and can withstand temperatures up to 500° F (260°C).

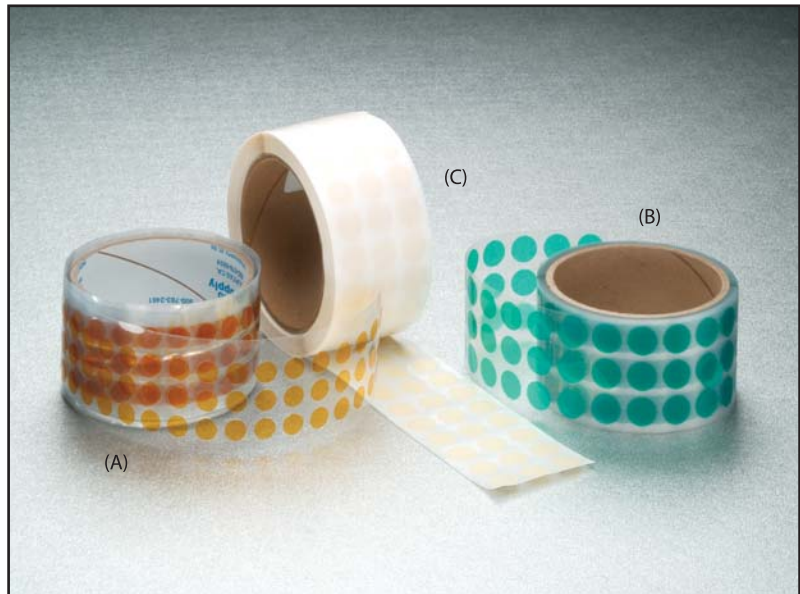
(B) 2 Mil Green Polyester Discs

As the industry standard for most powder coating and E-coating applications, these discs have a 1.5 mil silicone adhesive and will withstand temperatures up to 400° F (204° C).

(C) Hi-Temp Crepe Discs

Recommended for most painting processes, Hi-Temp Crepe Discs will withstand temperatures up to 325° F (163° C). Additionally, the discs provide precise line definition and are easily removed.

Ask about our specialty discs, which include Woven Glass Cloth, Lead Foil, Aluminum Foil, Electroplaters Vinyl Discs, and other Polyester styles.



(A) Kapton™ Discs

Part Number	Diameter		Pieces Per Roll
	Inches	mm	
144906	0.125	3.18	2,000
316656	0.156	3.96	2,000
616122	0.187	4.75	2,000
525567	0.218	5.54	2,000
631801	0.250	6.35	2,000
421855	0.281	7.14	2,000
104553	0.312	7.92	2,000
016073	0.375	9.53	2,000
345875	0.400	10.16	2,000
649369	0.437	11.10	2,000
866041	0.500	12.70	2,000
489266	0.562	14.27	2,000
134310	0.625	15.88	2,000
183120	0.687	17.45	1,000
664557	0.750	19.05	1,000
553661	0.812	20.62	1,000
989918	0.875	22.23	1,000
440741	0.937	23.80	1,000
675462	1.000	25.40	1,000
583490	1.062	26.97	500
257754	1.125	28.58	500
676199	1.187	30.15	500
090576	1.250	31.75	500
559613	1.312	33.32	500
644098	1.375	34.93	500
968268	1.437	36.50	500
854043	1.500	38.10	500
484147	1.625	41.28	500
544373	1.750	44.45	500
395225	1.812	46.02	500
768832	1.875	47.63	500
559785	2.000	50.80	500
208290	3.000	76.20	250
248475	4.000	101.60	250
280956	5.000	127.00	100
967013	6.000	152.40	100

(B) Polyester Discs

Part Number	Diameter		Pieces Per Roll
	Inches	mm	
255374	0.125	3.18	2,000
478999	0.156	3.96	2,000
361921	0.187	4.75	2,000
648053	0.218	5.54	2,000
646381	0.250	6.35	2,000
359504	0.281	7.14	2,000
534418	0.312	7.92	2,000
225242	0.375	9.53	2,000
556790	0.437	11.10	2,000
428234	0.500	12.70	2,000
948998	0.562	14.27	2,000
332045	0.625	15.88	2,000
949828	0.687	17.45	1,000
512873	0.750	19.05	1,000
761920	0.812	20.62	1,000
512875	0.875	22.23	1,000
128753	0.937	23.80	1,000
490504	1.000	25.40	1,000
887392	1.062	26.97	500
583263	1.125	28.58	500
029717	1.187	30.15	500
791197	1.250	31.75	500
950101	1.312	33.32	500
667311	1.375	34.93	500
969564	1.437	36.50	500
852960	1.500	38.10	500
076319	1.625	41.28	500
795162	1.750	44.45	500
043817	1.812	46.02	500
099025	1.875	47.63	500
818088	2.000	50.80	500
511301	3.000	76.20	250
294383	4.000	101.60	250
566528	5.000	127.00	100

Protective Film and Custom Die Cuts

Protect your product's finish from scratching or chipping during shipment, production or assembly by using our Protective Film Tape, a low-cost alternative for protecting large surface areas and minimizing returns. A simple solution for many of those odd-shaped parts, Protective Film Tape is available in discs and squares, or die cut to your specifications. Tabs can be added for easy removal. Contact us for custom shapes.

Product Features

- Low-adhesive tape strips off with no residue
- Colored for easy identification



Available in Crepe, Polyester, Kapton, Lead Foil, Aluminum Foil, Glass Cloth.

(C) Crepe Discs

Part Number	Diameter		Pieces Per Roll
	Inches	mm	
888115	0.125	3.18	5,000
431930	0.156	3.96	5,000
925671	0.187	4.75	5,000
197825	0.218	5.54	5,000
431076	0.250	6.35	5,000
924461	0.281	7.14	5,000
407541	0.312	7.92	5,000
962478	0.375	9.53	5,000
797896	0.437	11.10	5,000
268045	0.500	12.70	5,000
536071	0.562	14.27	5,000
361760	0.625	15.88	5,000
952929	0.687	17.45	4,000
531062	0.750	19.05	4,000
381394	0.812	20.62	4,000
691727	0.875	22.23	4,000
873794	0.937	23.80	4,000
974677	1.000	25.40	2,000
169237	1.062	26.97	2,000
107699	1.125	28.58	2,000
591915	1.187	30.15	2,000
545238	1.250	31.75	2,000
645583	1.312	33.32	2,000
192339	1.375	34.93	2,000
543342	1.437	36.50	2,000
558869	1.500	38.10	2,000
145134	1.562	39.67	2,000
996183	1.625	41.28	1,000
372139	1.687	42.85	1,000
243445	1.750	44.45	1,000
154651	1.812	46.02	1,000
620229	1.875	47.63	1,000
321122	1.937	49.20	1,000
209372	2.000	50.80	500
490772	2.125	53.98	500
535065	2.250	57.15	500
371030	2.375	60.33	500
415520	2.625	66.68	500
402489	2.750	69.85	500
031062	2.875	73.03	500
271964	3.000	76.20	500
570357	3.250	82.55	500
209472	3.500	88.90	500
877470	3.625	92.08	500
626052	3.750	95.25	500
664395	4.000	101.60	250
315596	4.250	107.95	250
209572	4.500	114.30	250
460319	4.750	120.65	250
225186	5.000	127.00	250
673592	5.250	133.35	250
317054	5.500	139.70	250
599398	5.750	146.05	250
958042	6.000	152.40	250
316854	6.500	165.10	250

Film Tape - Discs

Part Number	Diameter		Pieces Per Roll
	Inches	mm	
522138	1	25.4	500
361523	2	50.8	250
325194	3	76.2	150
615035	4	101.6	100
679378	5	127.0	100
769042	6	152.4	50
283996	7	177.8	50
442972	8	203.2	50
999918	9	228.6	50
950581	10	254.0	50
891235	11	279.4	50

Film Tape - Squares

Part Number	Dimension		Pieces Per Roll
	Inches	mm	
704932	1 x 1	25.4 x 25.4	500
381928	2 x 2	50.8 x 50.8	250
989022	3 x 3	76.2 x 76.2	150
593623	4 x 4	101.6 x 101.6	100
486179	5 x 5	127.0 x 127.0	100
464633	6 x 6	152.4 x 152.4	50
978660	7 x 7	177.8 x 177.8	50
589405	8 x 8	203.2 x 203.2	50
342740	9 x 9	228.6 x 228.6	50
735930	10 x 10	254.0 x 254.0	50
635186	11 x 11	279.4 x 279.4	50



Silicone Tubing and Sleeves

Silicone Tubing and Sleeves are ideal for covering long bolts, tubes, or pins where conventional silicone caps are too short. Tubing can be cut to your desired length with no tooling charges. These sleeves often represent an inexpensive alternative to investing in the molds needed to make a traditional cap.



Cut to any desired length to suit your application.



Product Features

- Resists temperatures up to 600°F (316°C)
- Will not contaminate a paint line

Applications

- Powder coating
- E-coating
- Finishing masks

Silicone Tubing and Sleeves

Part Number	Inside Diameter "A"		Inside Length "B"	
	Inches	mm	Feet	Meters
398591	0.040	1.02	100	30.48
754271	0.062	1.57	100	30.48
764763	0.080	2.03	100	30.48
621910	0.093	2.36	100	30.48
246447	0.109	2.77	100	30.48
899888	0.125	3.18	100	30.48
123259	0.140	3.56	100	30.48
603149	0.156	3.96	100	30.48
503390	0.172	4.37	100	30.48
527756	0.187	4.75	100	30.48
044684	0.203	5.16	100	30.48
964624	0.218	5.54	100	30.48
969828	0.234	5.94	100	30.48
402546	0.250	6.35	100	30.48
701478	0.281	7.14	100	30.48
176420	0.312	7.92	100	30.48
912682	0.343	8.71	100	30.48
574941	0.375	9.53	100	30.48
829873	0.406	10.31	100	30.48
331389	0.437	11.10	100	30.48
589474	0.500	12.70	100	30.48
153491	0.625	15.88	50	15.24
566124	0.750	19.05	50	15.24
906823	0.875	22.23	50	15.24
517131	0.937	23.80	50	15.24
547728	1.000	25.40	50	15.24
571353	1.125	28.58	50	15.24
830383	1.250	31.75	50	15.24
683464	1.375	34.93	50	15.24
023542	1.500	38.10	50	15.24
820733	1.625	41.28	50	15.24
613328	1.750	44.45	50	15.24
959592	1.875	47.63	50	15.24
594234	2.000	50.80	50	15.24

Note: Wall Thickness is 0.062 inches (1.57 mm) on all parts.





Other Tubing

Foam Tubing

Manufactured from closed cell foam rubber, these sleeves are ready to use as is, or they can be buffed or sculpted to enhance the look. In addition, each end of the tubing can be radiused for an evenly rounded, finished look.

Product Features

- Two styles:
 - Smooth finish
 - Buffed, no-slip finish
- Tooling available in ¼ - 1-½ inch diameters

Applications

- Rods and pipes
- Insulators



Vinyl Tubing

Extruded from flexible PVC, these sleeves are the economical choice when a long length is required.

Product Features

- Glossy or flat finish
- A variety of color choices

Applications

- Rods and pipes
- Insulators



Other Caps & Plugs

StockCap offers various styles of plugs and caps to fit your needs. Many stock colors are available as well as custom colors designed to your specifications.

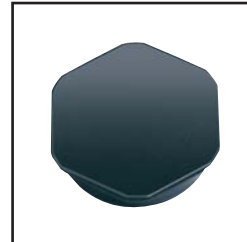
Clear Cap

Originally designed for clear mailing tubes and clear tubes for packaging, Clear Caps can be useful on the end of any tube. These lightweight and economical caps slide on easily, yet hold tight. Numerous sizes are in stock for immediate shipment, and while clear is stocked other tints are available. Should you require a special size or tint, tooling costs are very inexpensive.



Poly Plug

Low-cost Poly Plugs are often used in designing retail packages, but the simplicity of the plug makes them useful in other applications, as well. They are available with hexagonal or round ends, and the flat bottom sits easily on flat surfaces or can be stacked. Hexagonal caps are stocked in black, but custom colors and round styles are readily available.



Hanger Plug

These LDPE plugs are tight fitting and easy to apply. Originally designed for a retail environment, Hanger Plugs are an excellent solution when you want to hang your product, or lack shelf space for storage. The Hanger Plugs are stocked in black, white, and red.





EZ-On Caps

EZ-On Caps are yet another representation of the vinyl Short Cap that includes a special design feature, aiding the user in placing the cap on an object. The beveled style promotes quick and easy assembly, reducing production time. Used often with tubes, the cap's design facilitates upright standing for efficiency in shipping or storage.



Pull Tab Plugs

Pull Tab Plugs are designed with ridges for a secure fit, and feature a special tab design to aid in the removal of the plug. Pull Tab Plugs fit most popular sizes of mailing tubes. Our standard white Pull Tab Plugs are stocked in diameters ranging from 1-1/2 inches up to 5-inches with options for custom colors.



Material Formulations

For over fifty years StockCap has been combining its experience, technology and manufacturing expertise to help customers solve their toughest molding problems. As one of the world's premier plastic and rubber processing companies, we have developed hundreds of material formulas to meet the specific requirements of over 20,000 customers in 40 countries.



Call us with your specific application.

StockCap Material Properties

Formula Number	Hardness	Gloss	Texture	Special Characteristics	Hardness (Shore A)	Tensile (PSI)	Elongation (%)
- VINYL -							
325	S	L	C	textured for good grip properties	65	850	310
509	M	M	S	anti-static	75	1950	410
512	M	H	S	transparent, yellow tint	75	1650	410
524	SR	H	S	transparent, blue-green tint	85	2250	420
601	SR	M	S	high temperature resistant, intermittent use to 500F	86	2100	330
604	M	H	S	high temperature resistant	75	2000	370
607	M	M	M	good weather resistance	80	2300	350
701	M	M	S	standard formula	75	2000	350
709	S	M	S	basic soft formula	65	1485	450
714	M	H	S	dilatable, non-staining on copper	75	1800	440
722	R	L	M	hardest formula available	60 (Shore D)	2970	100
727	M	L	M	slight textured surface	76	1400	340
741	M	L	M	fire retardant, UL qualifiable (UL-94-V0)	80	1770	375
746	M	L	M	slight textured surface	72	1950	400
750	SR	M	S	basic semi-rigid formula	89	2300	320
- RUBBER -							
EPDM	S	L	-	chemical and weather resistant	40 - 70	1800	400
NEOPRENE	S	L	-	good weather resistance, flame retardant	50	1450	300
SBR/NR	S	L	-	good physicals, non-staining on copper	50	3625	450
SILICONE	S	L	-	high and low temperature resistant	50 - 60	1300	330
- PLASTIC -							
LDPE	R	-	-	flexible, economical, good chemical resistance	40 (Shore D)	1450 - 1740	300 - 500
HDPE	R	-	-	good physicals, economical, good chemical resistance	60 (Shore D)	2465 - 4060	10 - 600
PP	R	-	-	good fatigue resistance	80 (Rockwell)	3600	8.5
TPE	M	-	-	good temperature and weather resistance	75	1010	600

Hardness: Soft (0-70), Medium (71-80), Semi-Rigid (81-90), Rigid (>90)

Gloss: Low, Medium, High

Texture: Smooth, Medium, Coarse

We offer many standard formulas, which are available in a large assortment of colors and durometers ready for immediate shipment. Our standard materials also come in textured and high gloss finishes. Special purpose materials including anti-static, high-temperature, flame retardant, and U.V. resistant, are available for custom formulations. Full compounding capabilities allow us to provide timely and cost-effective custom solutions.



Colors are for reference only. Please request a sample of the actual formula color.

Tear Strength (PPI)	Service Temperature		Electrical Properties	Standard Colors									
	Low °F (°C)	High °F (°C)		Black	Red	Blue	Yellow	Green	Orange	Grey	White	Neutral	Clear
- VINYL -													
110	-25 (-32)	250 (121)	fair	X	X	X	X	X			X		
250	-20 (-29)	250 (121)	anti-static	X									
200	-22 (-30)	250 (121)	good									X	
360	-22 (-30)	250 (121)	good									X	
260	0 (-18)	450 (232)	good	X			X						
235	-22 (-30)	350 (176)	good			X							
325	-15 (-26)	250 (121)	good	X						X			
280	-22 (-30)	250 (121)	good	X	X	X	X	X	X	X	X		
164	-50 (-46)	250 (121)	fair	X	X	X	X	X			X		
230	-22 (-30)	250 (121)	good	X	X	X	X	X			X		
605	45 (7)	250 (121)	good	X			X						
245	-22 (-30)	250 (121)	good	X	X	X	X	X			X		
275	-20 (-29)	250 (121)	excellent	X									
240	-22 (-30)	250 (121)	good	X	X	X	X	X			X		
343	14 (-10)	250 (121)	good	X	X	X	X	X			X		
- RUBBER -													
250	-20 (-29)	350 (177)	good	X									
-	-30 (-22)	212 (100)	fair	X									
-	-	175 (80)	excellent	X				X			X		
100	-50 (-46)	450 (232)	good		X							X	
- PLASTIC -													
-	-	180 (82)	-		X							X	
-	-	200 (93)	-		X							X	
-	-	212 (100)	-									X	
-	-71 (-57)	257 (125)	-	X									

What you should know about the specs of vinyl materials.

Inside Diameter or ID:

The soft and flexible material creates a very tight fit when you select a cap that is slightly smaller than the diameter of the item you need to cap. For example, if the outside diameter is .500" (12.70 mm), use a .437" (11.10 mm) cap.

This rule may vary for the longer length caps. In some cases the inside diameter of the Long Cap should match the outside diameter of the part. E.g., if the outside diameter is .625" (15.88mm), use a .625" (15.88mm) inside diameter Long Cap. If uncertain which will work best for your part, please call for assistance and/or samples.

Length:

Caps increment by .062" (1.57mm) and are available in lengths up to the maximum shown on each product chart.

Inside length tolerance is ± .062" (1.57 mm) for all styles.

Wall thickness:

Generally, wall tolerance is ± .010" (.25 mm). As the length of a part increases, the wall thickness tapers slightly heavier to the closed end. Upon request, this can be adjusted to meet your specifications.

About the Manufacturing Processes

Dip Molding

PVC (liquid plastisol) is the most commonly used material in producing caps and plugs. The varieties of material formulations, along with length variations, create the hundreds of possibilities in size, shape and flexibility.

Product Features

- No tooling charges on caps of varying lengths
 - Vinyl material stretches to fit odd shapes
 - Vinyl material will not crack or split
-

Injection Molding

LDPE is the most commonly used material in producing injection molded caps and plugs. Liquid material injected into a mold and left to cool results in a variety of plastic products ranging from housewares to toys. Injection molding is the most prevalent process used to produce plastic parts.

Product Features

- Economical
 - Fast turnaround time
 - Low tooling cost
-

Compression Molding

Silicone, EPDM, Nitrile and natural rubber are just a few of the materials used to produce rubber products often found in finishing operations. Pre-heated material is compressed into a mold then cooled to form a specific shape.

Product Features

- Rubber materials withstand high temperatures without the threat of contaminating a paint line
- Produces more intricate parts with a fair amount of detail
- Especially cost effective on lower volume items

Thermoforming

PVC and PET are the most commonly used materials in producing trays and clamshells. Material thickness ranges from .007 inches to .047 inches.

Product Features

- Low-cost tooling
- In-house design team
- Great design flexibility
- Protects the most precise details
- Secured product for added protection
- Nesting feature lowers costs on shipping and storage



Custom & Finishing

A state-of-the-art tooling fabrication shop allows us to achieve quick delivery at the lowest possible cost. In addition, our experienced engineering staff utilizes Pro-Engineer® software to create and modify complex parts quickly and cost effectively.

We also have extensive material compounding capabilities. Our research and development lab continually develops new materials for the evolving needs of our customers.



The StockCap Custom Dip Molding Advantage:

- Prototype samples and quotes completed quickly and inexpensively
- Variety of material durometers, textures and colors
- Multi-color and multi-texture capabilities



The StockCap Custom Injection and Compression Molding Advantage:

- Low tooling costs
- Wide variety of material durometers and colors
- Inexpensive prototypes
- Plastic and rubber materials

StockCap will design and mold your custom parts in most thermoplastics. We also offer Silicone, EPDM, Neoprene, and Natural Rubber to meet practically any need.



The StockCap Finishing Advantage:

Punching

- Round or rectangular holes
- Clean punches with no shredding
- Allows vinyl parts to be used in applications that require items such as wire to pass through closure

Slicing

- Any part can be made into a sleeve with a simple slicing process
- Slices are clean with no shredding

Imprinting

- Single or multi-color processes
- High-gloss colors fuse into vinyl and won't flake or fade
- Imprint resists oils, solvents and abrasive actions
- Print company name, trademark, or instructions
- Low-cost branding



Family of Companies

Back in 1950, Sinclair & Rush, Inc. began supplying a small line of dip molded products to a handful of customers. Today, we boast of manufacturing and distribution capabilities on a much larger scale; a global scale. With manufacturing and selling operations spanning the globe: North America, Europe, Asia, Latin American and Australia, Sinclair & Rush supplies over 20,000 customers.

By offering products that provide a solution, we've earned the status as a premier supplier to some of the world's leading manufacturers. To that end, Sinclair & Rush is constantly looking for ways to develop new technologies, applications and materials that create value for our customers.

Currently, six companies operate under the Sinclair & Rush name: StockCap, GripWorks, VisiPak, VynaFlex, Castle Bay and Soffware. Each division specializes in its own product category, offering new and unique solutions to product protection problems.

Our ability to provide a full line of complementary processes and products uniquely positions us as one of the world's leading multi-processors of plastic components. Sinclair & Rush is your single source for vinyl, plastic, and rubber product protection needs.



The Arnold, Missouri USA manufacturing plant is ISO 9001 and ISO 14001 certified.



STOCKCAP
The right fit for you business.
www.stockcap.com

GRIPWORKS
The world's grip manufacturer.
www.gripworks.com

Castle Bay
International supplier of retail golf accessories.
www.castlebay.com

VISIPAK
The Clear Choice for Transparent Packaging
www.visipak.com

VynaFlex
Plastisol Compounds
More than an eminent plastisol supplier... a plastisol consultant.
www.vynaflex.com

Soffware
Beverageware With Style!
www.soffware.com





Kirkwood, Missouri USA Manufacturing Plant



United Kingdom Manufacturing Plant



Ordering Information

(U.S. only)

Clarification of Orders

Orders are scheduled when clarification of purchase orders has been completed. Phone orders must be accompanied by a written confirmation. StockCap will not produce orders without a bill to and ship to address.

Minimum Requirements

There are no minimum requirements when shopping online, however conventional ordering requires a \$50 minimum in full box quantities only.

Samples

StockCap recommends approval of samples before ordering, especially on production run parts. Returns will not be accepted if samples were refused.

Cancellations

No cancellations without approval of StockCap. A \$50 cancellation fee may apply.

Credit Terms

Net 30 days subject to credit approval. Mastercard, Visa and American Express are accepted.

Freight

We ship Collect, F.O.B. Our Factory. If a carrier is not specified when the order is placed, StockCap will select a carrier. We are not responsible for the delay of any freight carrier. All goods are shipped at the buyer's risk. We do not insure on-time transit or safe carriage of goods. Goods insured by standard carrier coverage only.

Overruns and Underruns

We reserve the right to ship and bill up to 10% above or below the quantity ordered.

Returns

No returns will be accepted without a Return Authorization number provided by StockCap. Please call for a Return Goods Authorization Number. Stock items must be returned within 30 days from date shipped. Clear products and extruded tubing may only be returned if defective. Stock parts are subject to a restocking charge of \$50.00 or \$20.00 per box whichever is greater.

UNITED STATES

Sinclair & Rush, Inc.
123 Manufacturers Drive
Arnold, MO 63010
Tel: 636-282-6800
Fax: 636-282-6888
E-mail: corporate@sinclair-rush.com



3545 Scarlet Oak Boulevard
St. Louis, MO 63122
Tel: 636-282-6800
Fax: 636-282-6888
E-mail: corporate@sinclair-rush.com

ENGLAND

Sinclair & Rush, Ltd.
Units 11-13 Spectrum West
20/20 Maidstone Business Estate
Maidstone Kent ME 16 0LL
Tel: 44-1622-693200
Fax: 44-1622-693201
E-mail: sales@sinclair-rush.co.uk

**AUSTRALIA**

Sinclair & Rush, Pty. Ltd.
51 Wellington Street
Riverstone 2765 NSW Sydney
Tel: 61-2-9627-3211
Fax: 61-2-9627-5156
Toll Free: 1-800-00-3211
E-mail: info@sinclair-rush.com.au

MEXICO

Sinclair & Rush
Av. Benito Juarez # 1406
Guadalupe, N.L.
México CP 67140
Tel: 52-81-8030-4787
Fax: 52-81-8030-4796
E-mail: ventas@sinclair-rush.com.mx

CHINA

S&R (Changzhou)
Rubber and Plastic Products Co., Ltd.
15B, Jintong Park, No. 8, Xihu Road, Wujin Hi-tech
Changzhou, Jiangsu
China 213164
Tel: 86-519-622-6080
Fax: 86-519-622-6085
E-mail: sales_china@sinclair-rush.com

STOCKCAP
A Sinclair & Rush Company

1-800-827-CAPS (2277)
WWW.STOCKCAP.COM