

2005

# STOCKCAP®

Custom Solutions

## Finishing Edition



Vinyl



Rubber



Plastic

**Ready to Ship** *millions  
millions in stock!  
millions*



For additional products visit:  
[WWW.STOCKCAP.COM](http://WWW.STOCKCAP.COM)

# Short Caps

Flexible Short Caps can be applied quickly and easily. No matter what the application, they fit snugly without cracking or splitting. Short Caps also possess excellent insulation qualities and resist weather, moisture and chemicals. These caps are also available in high temperature resistant material withstanding temperatures up to 446° F (230° C) for extended periods without breaking down.



**Ready to Ship**  
millions  
millions in stock!  
millions

## **Product Features**

- Thousands of sizes
- Large selection of colors
- Hundreds of design possibilities

## **Applications**

- Thread Protectors
- Masks (for painting, plating, coating, shot blasting)
- Insulators
- Decorators
- Seals
- Color Coding



## Short Caps (for longer lengths see pages 6 & 7)

Inside Diameter "A"		Max Inside Length "B"		Nominal Wall Thickness "C"		Ready to Ship
In.	mm	In. ± .062	mm ± 1.57	In. ± .010	mm ± .25	
.062	1.57	.750	19.05	.028	.71	✓
.080	2.03	.750	19.05	.028	.71	✓
.093	2.36	.750	19.05	.028	.71	✓
.112	2.85	1.000	25.40	.030	.76	✓
.125	3.18	1.500	38.10	.033	.84	✓
.137	3.48	1.500	38.10	.033	.84	✓
.142	3.61	1.500	38.10	.033	.84	✓
.151	3.84	1.500	38.10	.038	.97	✓
.156	3.96	1.500	38.10	.038	.97	✓
.172	4.37	1.500	38.10	.038	.97	✓
.187	4.75	1.500	38.10	.038	.97	✓
.207	5.26	1.500	38.10	.038	.97	✓
.219	5.56	1.500	38.10	.038	.97	✓
.234	5.94	1.500	38.10	.038	.97	✓
.240	6.10	1.500	38.10	.038	.97	✓
.250	6.35	1.500	38.10	.043	1.07	✓
.281	7.14	2.500	63.50	.043	1.07	✓
.313	7.95	1.500	38.10	.043	1.07	✓
.331	8.41	1.500	38.10	.043	1.07	✓
.343	8.71	2.500	63.50	.043	1.07	✓
.375	9.53	1.500	38.10	.043	1.07	✓
.406	10.31	2.500	63.50	.055	1.40	✓
.420	10.67	1.500	38.10	.055	1.40	✓
.437	11.10	1.500	38.10	.055	1.40	✓
.446	11.33	1.500	38.10	.055	1.40	✓
.468	11.89	2.500	63.50	.055	1.40	✓
.500	12.70	1.500	38.10	.055	1.40	✓
.531	13.49	2.500	63.50	.060	1.52	✓
.562	14.28	1.500	38.10	.060	1.52	✓
.625	15.88	1.500	38.10	.060	1.52	✓
.687	17.45	1.500	38.10	.060	1.52	✓
.730	18.54	1.500	38.10	.060	1.52	✓
.750	19.05	1.500	38.10	.060	1.52	✓
.812	20.63	1.500	38.10	.060	1.52	✓
.843	21.41	1.500	38.10	.060	1.52	✓
.875	22.23	1.500	38.10	.060	1.52	✓
.937	23.80	1.500	38.10	.060	1.52	✓
.950	24.13	1.500	38.10	.060	1.52	✓
1.000	25.40	1.500	38.10	.060	1.52	✓
1.062	26.98	1.500	38.10	.065	1.65	✓
1.125	28.58	1.500	38.10	.065	1.65	✓
1.187	30.15	1.500	38.10	.065	1.65	✓
1.250	31.75	1.500	38.10	.065	1.65	✓
1.313	33.35	2.000	38.10	.065	1.65	✓
1.375	34.93	1.500	38.10	.065	1.65	✓
1.500	38.10	1.500	38.10	.065	1.65	✓
1.625	41.28	1.500	38.10	.065	1.65	✓
1.687	42.85	1.500	38.10	.065	1.65	✓
1.750	44.45	1.500	38.10	.065	1.65	✓
1.875	47.63	2.000	50.80	.065	1.65	✓
2.000	50.80	1.500	38.10	.065	1.65	✓
2.125	53.98	1.750	44.45	.065	1.65	✓
2.250	57.15	1.500	38.10	.065	1.65	✓
2.375	60.33	1.500	38.10	.065	1.65	✓
2.500	63.50	1.500	38.10	.065	1.65	✓
2.625	66.68	1.750	44.45	.065	1.65	✓
2.750	69.85	1.500	38.10	.065	1.65	✓
3.000	76.20	1.500	38.10	.065	1.65	✓
3.125	79.38	1.750	44.45	.065	1.65	✓
3.250	82.55	1.500	38.10	.065	1.65	✓
3.500	88.90	1.500	38.10	.065	1.65	✓
3.625	92.08	1.750	44.45	.065	1.65	✓
4.000	101.60	1.750	44.45	.065	1.65	✓
4.750	120.65	2.000	50.80	.065	1.65	✓

## ✓ 360 Stock Choices 45 diameters in 4 lengths!

(Your choice of Red or Black in ½", ¾", 1", 1½" lengths)

**Length:** Short Caps are available in any length, in 1/16" (1.59 mm) increments. Minimum length is .187" (4.75 mm). Inside length tolerance is ± .062" (1.57 mm). Inside length is measured along the side wall to the radius of the closed end, not down the center.

**Wall thickness "C"** is measured .250" (6.35 mm) from the open end, increasing slightly toward the closed end. Wall tolerance is ± .010" (.25 mm).

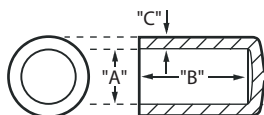
**ID:** Because Short Caps are soft and flexible, we suggest an undersized diameter for a tight fit. For example, if your outside diameter is .500" (12.70 mm), use a .437" (11.10 mm) Short Cap.

Contact us for sizes not listed. For caps with longer lengths, see pages 6 and 7, Long Caps.

**Standard colors:** Black, Red, White, Blue, Green, Orange, Yellow, Gray. Other colors available upon request.

## Wire Gauge Sizing

Wire Gauge	Wire O.D. In Inches	Vinyl Tip I. D. In Inches	
		Snug-fit	Tight-fit
1	.2830	.281	.250
2	.2625	.250	.234
3	.2437	.234	.207
4	.2253	.207	.187
5	.2070	.187	.187
6	.1920	.187	.172
7	.1770	.172	.156
8	.1620	.156	.137
9	.1483	.137	.137
10	.1350	.125	.125
11	.1205	.112	.112
12	.1055	.093	.093
13	.0915	.080	.080
14	.0800	.062	.062
15	.0720	.062	.062



## Long Caps

Made of tough, flexible vinyl, Long Caps are available in lengths up to 24" long. These caps are ideal for covering long bolts or providing a clean finish to the end of a tube. Our double-dip process can be utilized to achieve two-color or dual durometer parts.

### Product Features

- Thousands of sizes
- Wide variety of color choices
- Available in high temperature resistant material
- Can be imprinted, punched, or sliced to meet your specifications
- Hundreds of design possibilities including varying:
  - wall thickness
  - hardness
  - inside length
  - surface texture

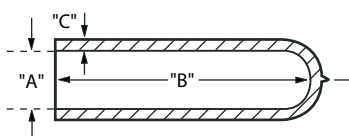
### Applications

- Thread Protectors
- Masks (for painting, plating, coating, shot blasting)
- Insulators



### Long Caps - Round End

Inside Diameter "A"		Max Inside Length "B"		Nominal Wall Thickness "C"			
				(At Min Length)		(At Max Length)	
In.	mm	In ± .062	mm ± 1.57	In ± .010	mm ± 0.25	In ± .010	mm ± 0.25
.165	4.19	3.500	88.90	.055	1.40	.055	1.40
.187	4.75	3.500	88.90	.055	1.40	.055	1.40
.207	5.26	3.500	88.90	.055	1.40	.055	1.40
.250	6.35	4.250	107.95	.060	1.52	.065	1.65
.305	7.75	7.000	177.80	.060	1.52	.065	1.65
.313	7.95	6.250	158.75	.060	1.52	.065	1.65
.375	9.53	7.000	177.80	.065	1.65	.075	1.91
.437	11.10	5.250	133.35	.065	1.65	.075	1.91
.500	12.70	5.250	133.35	.065	1.65	.075	1.91
.562	14.27	5.250	133.35	.065	1.65	.075	1.91
.600	15.24	5.750	146.05	.065	1.65	.075	1.91
.625	15.88	11.000	279.40	.065	1.65	.075	1.91
.687	17.45	5.250	133.35	.065	1.65	.075	1.91
.750	19.05	11.000	279.40	.065	1.65	.075	1.91
.812	20.63	8.500	215.90	.070	1.78	.080	2.03
.843	21.41	10.000	254.00	.070	1.78	.080	2.03
.875	22.23	8.500	215.90	.070	1.78	.080	2.03
.937	23.80	11.000	279.40	.070	1.78	.080	2.03
1.000	25.40	8.500	215.90	.070	1.78	.080	2.03
1.062	26.97	5.250	133.35	.065	1.65	.075	1.91
1.125	28.58	5.250	133.35	.065	1.65	.075	1.91
1.250	31.75	5.250	133.35	.065	1.65	.075	1.91
1.500	38.10	5.250	133.35	.065	1.65	.075	1.91
1.625	41.28	5.250	133.35	.065	1.65	.075	1.91

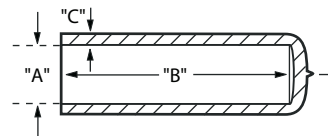


**NOTE:** "B" dimension-Inside length is measured to center of closed end. The length tolerance is ± .062" (1.57 mm).



Long Caps - Flat End

Inside Diameter "A"		Max Inside Length "B"		Nominal Wall Thickness "C"			
				(At Min Length)		(At Max Length)	
In.	mm	In ± .062	mm ± 1.57	In ± .010	mm ± 0.25	In ± .010	mm ± 0.25
.187	4.75	3.500	88.90	.055	1.40	.055	1.40
.207	5.26	3.500	88.90	.055	1.40	.055	1.40
.250	6.35	4.250	107.95	.060	1.52	.065	1.65
.313	7.95	6.000	152.40	.060	1.52	.065	1.65
.375	9.53	6.000	152.40	.065	1.65	.075	1.91
.437	11.10	6.000	152.40	.065	1.65	.075	1.91
.500	12.70	8.500	215.90	.065	1.65	.075	1.91
.562	14.28	6.000	152.40	.065	1.65	.075	1.91
.610	15.50	6.750	171.45	.065	1.65	.075	1.91
.625	15.88	6.000	152.40	.065	1.65	.075	1.91
.687	17.45	6.000	152.40	.065	1.65	.075	1.91
.725	18.42	24.000	609.60	.065	1.65	.075	1.91
.730	18.54	6.000	152.40	.065	1.65	.075	1.91
.750	19.05	6.000	152.40	.065	1.65	.075	1.91
.812	20.63	6.000	152.40	.070	1.78	.080	2.03
.830	21.08	6.000	152.40	.070	1.78	.080	2.03
.843	21.41	6.000	152.40	.070	1.78	.080	2.03
.875	22.23	24.000	609.60	.070	1.78	.080	2.03
.921	23.39	24.000	609.60	.070	1.78	.080	2.03
.937	23.80	24.000	609.60	.070	1.78	.080	2.03
.950	24.13	6.000	152.40	.070	1.78	.080	2.03
1.000	25.40	24.000	609.60	.070	1.78	.080	2.03
1.062	26.98	6.000	152.40	.070	1.78	.080	2.03
1.125	28.58	24.000	609.60	.070	1.78	.080	2.03
1.187	30.15	6.000	152.40	.070	1.78	.080	2.03
1.220	30.99	10.000	254.00	.070	1.78	.080	2.03
1.250	31.75	6.000	152.40	.070	1.78	.080	2.03
1.375	34.93	6.000	152.40	.070	1.78	.080	2.03
1.500	38.10	6.000	152.40	.070	1.78	.080	2.03
1.625	41.28	6.000	152.40	.070	1.78	.080	2.03
1.687	42.84	6.000	152.40	.070	1.78	.080	2.03
1.750	44.45	6.000	152.40	.070	1.78	.080	2.03
2.000	50.80	6.000	152.40	.070	1.78	.080	2.03
2.250	57.15	6.000	152.40	.070	1.78	.080	2.03
2.500	63.50	6.000	152.40	.070	1.78	.080	2.03
2.750	69.85	6.000	152.40	.070	1.78	.080	2.03
3.000	76.20	6.000	152.40	.070	1.78	.080	2.03
3.250	82.55	6.000	152.40	.070	1.78	.080	2.03
3.500	88.90	6.000	152.40	.070	1.78	.080	2.03



**NOTE:** "B" dimension is measured to inside radius on Flat End Caps.

**NOTE:** "C" dimension is measured 1/4" (6.35 mm) from open end. Wall thickness tapers slightly heavier to closed end. Heavier or lighter wall thicknesses are available upon request.

Long Caps should be sized to match the O.D. (outside diameter) of your part. Example: If your O.D. is 5/8" (15.88 mm), use a .625" (15.88 mm) Long Cap.

All Long Caps are available in any length up to the maximum shown, within .062" (1.57 mm) increments.

**Standard colors:** Black, Red, White, Blue, Green, Orange, Yellow, Gray. Other colors available upon request.



## Rectangular Caps

Stockcap offers a broad selection of, hard to find, Rectangular Caps in popular sizes and colors. Flexible vinyl makes application quick and easy. Plus, Rectangular Caps possess excellent insulation properties.



### Product Features

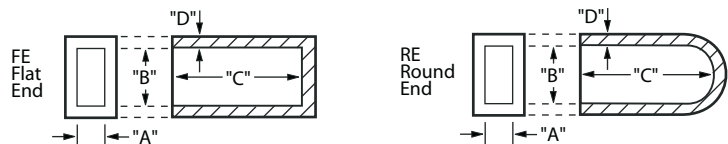
- Thousands of sizes
- Wide variety of color choices
- Available in high temperature resistant material
- Can be imprinted, punched, or sliced to meet your specifications
- Hundreds of design possibilities including varying:
  - wall thickness
  - hardness
  - inside length
  - surface texture

### Applications

- Tool grips
- Lever and handle covers
- Masks (for painting, plating, coating, shot blasting)
- Finishing caps

### Rectangular Caps - Long Sizes

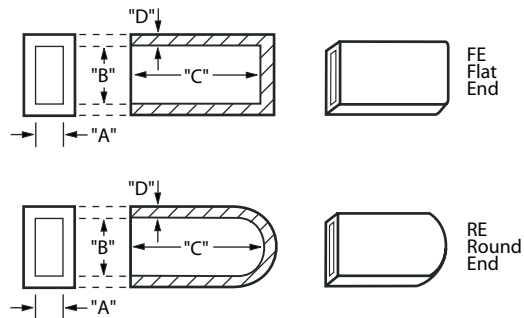
Inside Dimension "A"		Inside Dimension "B"		Max Inside Length "C"		Nominal Wall Thickness "D"			
						(At Min Length)		(At Max Length)	
In.	mm	In.	mm	In. ± .062	mm ± 1.57	In. ± .010	mm ± 0.25	In. ± .010	mm ± 0.25
.062	1.57	.312 RE	7.93 RE	4.000	101.60	.065	1.65	.070	1.78
.062	1.57	.343 RE	8.71 RE	3.875	98.43	.065	1.65	.070	1.78
.062	1.57	.375 RE	9.53 RE	4.250	107.95	.065	1.65	.070	1.78
.062	1.57	.437 RE	11.10 RE	4.375	111.13	.065	1.65	.070	1.78
.062	1.57	.500 FE	12.70 FE	4.250	107.95	.065	1.65	.070	1.78
.062	1.57	.625 RE	15.88 RE	4.500	114.30	.065	1.65	.070	1.78
.062	1.57	.750 RE	19.05 RE	4.750	120.65	.065	1.65	.070	1.78
.090	2.29	1.000 FE	25.40 FE	5.125	130.18	.065	1.65	.070	1.78
.095	2.41	.875 RE	22.23 RE	4.750	120.65	.065	1.65	.070	1.78
.125	3.18	.437 RE	11.10 RE	4.500	114.30	.065	1.65	.070	1.78
.125	3.18	.500 RE	12.70 RE	4.500	114.30	.065	1.65	.070	1.78
.125	3.18	.500 FE	12.70 FE	4.250	107.95	.065	1.65	.070	1.78
.125	3.18	.562 FE	14.28 FE	4.500	114.30	.065	1.65	.070	1.78
.125	3.18	.675 RE	17.15 RE	3.750	95.25	.065	1.65	.070	1.78
.125	3.18	.750 RE	19.05 RE	5.250	133.35	.065	1.65	.070	1.78
.125	3.18	.750 FE	19.05 FE	4.250	107.95	.065	1.65	.070	1.78
.125	3.18	1.000 RE	25.40 RE	5.000	127.00	.065	1.65	.070	1.78
.125	3.18	2.250 FE	57.15 FE	4.375	111.13	.065	1.65	.070	1.78
.162	4.12	1.250 RE	31.75 RE	6.000	152.40	.065	1.65	.070	1.78
.187	4.75	.500 RE	12.70 RE	4.250	107.95	.065	1.65	.070	1.78
.187	4.75	.937 FE	23.80 FE	5.500	139.70	.065	1.65	.070	1.78
.187	4.75	1.500 RE	38.10 RE	8.000	203.20	.065	1.65	.075	1.91
.250	6.35	.750 RE	19.05 RE	5.250	133.35	.065	1.65	.070	1.78
.250	6.35	1.000 RE	25.40 RE	5.250	133.35	.065	1.65	.070	1.78
.250	6.35	1.250 RE	31.75 RE	5.500	139.70	.065	1.65	.070	1.78
.250	6.35	2.000 FE	50.80 FE	6.000	152.40	.065	1.65	.070	1.78
.315	8.00	1.772 RE	45.01 RE	5.000	127.00	.065	1.65	.070	1.78
.368	9.35	.970 FE	24.64 FE	6.000	152.40	.065	1.65	.070	1.78



## Rectangular Caps - *Short sizes*

Inside Dimension "A"		Inside Dimension "B"		Max Inside Length "C"		Nominal Wall Thickness "D"	
In.	mm	In.	mm	In. ± .062	mm ± 1.57	In. ± .010	mm ± 0.25
.035	.89	.906 FE	23.01 FE	.750	19.05	.050	1.27
.040	1.02	.250 FE	6.35 FE	.750	19.05	.050	1.27
.059	1.50	.813 FE	20.65 FE	2.250	57.15	.055	1.40
.062	1.57	.312 RE	7.93 RE	1.500	38.10	.055	1.40
.062	1.57	.343 RE	8.71 RE	1.500	38.10	.060	1.52
.062	1.57	.375 RE	9.53 RE	1.500	38.10	.060	1.52
.062	1.57	.406 RE	10.31 RE	1.750	44.45	.060	1.52
.062	1.57	.437 RE	11.10 RE	1.500	38.10	.060	1.52
.062	1.57	.468 RE	11.89 RE	1.750	44.45	.060	1.52
.062	1.57	.500 FE	12.70 FE	1.500	38.10	.060	1.52
.062	1.57	.625 RE	15.88 RE	1.500	38.10	.060	1.52
.062	1.57	.750 RE	19.05 RE	1.500	38.10	.060	1.52
.062	1.57	1.150 RE	29.21 RE	2.062	52.39	.060	1.52
.062	1.57	1.500 FE	38.10 FE	1.750	44.45	.060	1.52
.062	1.57	1.656 FE	42.06 FE	1.250	31.75	.060	1.52
.062	1.57	12.280 FE	311.91 FE	1.000	25.40	.050	1.27
.075	1.91	.300 FE	7.62 FE	1.500	38.10	.055	1.40
.080	2.03	.375 FE	9.53 FE	1.375	34.93	.055	1.40
.080	2.03	1.750 FE	44.45 FE	1.250	31.75	.055	1.40
.090	2.29	.437 FE	11.10 FE	1.750	44.45	.055	1.40
.090	2.29	1.000 FE	25.40 FE	1.500	38.10	.055	1.40
.125	3.18	.437 RE	11.10 RE	1.500	38.10	.060	1.52
.125	3.18	.500 RE	12.70 RE	1.500	38.10	.060	1.52
.125	3.18	.500 FE	12.70 FE	1.500	38.10	.060	1.52
.125	3.18	.750 RE	19.05 RE	1.500	38.10	.060	1.52
.125	3.18	.750 FE	19.05 FE	1.625	41.28	.060	1.52
.125	3.18	1.000 RE	25.40 RE	2.500	63.50	.060	1.52
.125	3.18	1.125 FE	28.58 FE	2.500	63.50	.060	1.52
.125	3.18	1.187 FE	30.15 FE	1.625	41.28	.060	1.52
.125	3.18	3.312 FE	84.12 FE	1.250	31.75	.060	1.52
.165	4.19	1.500 FE	38.10 FE	2.000	50.80	.060	1.52
.187	4.75	.500 RE	12.70 RE	1.500	38.10	.060	1.52
.187	4.75	.625 RE	15.88 RE	1.500	38.10	.060	1.52
.187	4.75	.625 FE	15.88 FE	1.250	31.75	.060	1.52
.250	6.35	.625 FE	15.88 FE	1.625	41.28	.060	1.52
.250	6.35	1.000 RE	25.40 RE	1.500	38.10	.060	1.52
.250	6.35	1.000 FE	25.40 FE	1.500	38.10	.060	1.52
.250	6.35	1.250 FE	31.75 FE	2.500	63.50	.060	1.52
.250	6.35	2.000 FE	50.80 FE	2.000	50.80	.060	1.52
.313	7.95	.750 FE	19.05 FE	1.500	38.10	.060	1.52
.470	11.94	2.125 FE	53.98 FE	1.500	38.10	.060	1.52
.490	12.45	3.375 FE	85.73 FE	1.250	31.75	.060	1.52
.500	12.70	4.750 FE	120.65 FE	1.000	25.40	.060	1.52
.562	14.28	1.375 FE	34.93 FE	1.250	31.75	.060	1.52
.710	18.03	4.000 FE	101.60 FE	1.000	25.40	.060	1.52
.750	19.05	1.125 FE	28.58 FE	1.500	38.10	.060	1.52
.770	19.56	1.594 FE	40.49 FE	1.750	44.45	.060	1.52
1.062	26.98	2.500 FE	63.50 FE	1.500	38.10	.060	1.52
1.187	30.15	2.625 FE	66.68 FE	1.250	31.75	.060	1.52

RE = Round End  
FE = Flat End



**Inside length tolerance:** ± .062" (1.57 mm)

**Inside lengths** are available in .062" (1.57 mm) increments.

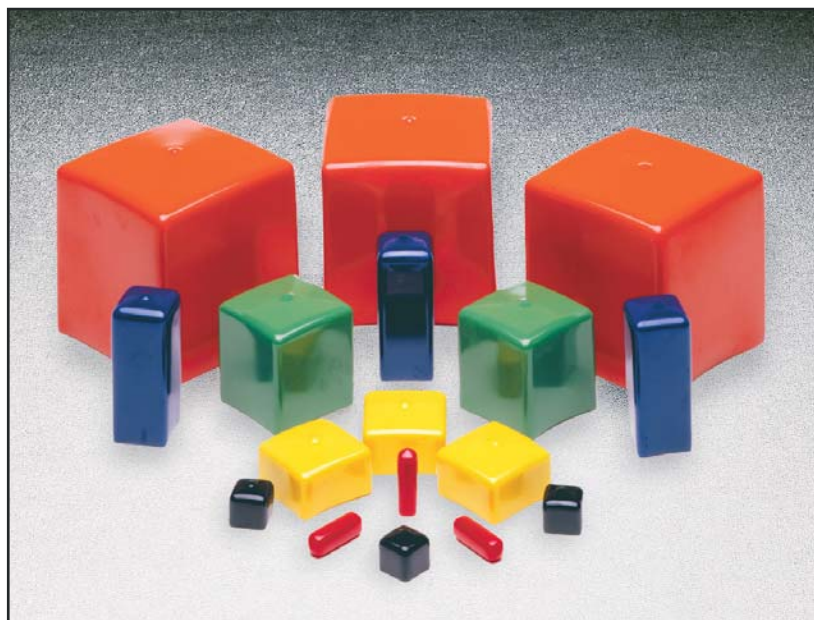
**Wall thickness tolerance:** ± .010" (.25 mm)

**Wall thicknesses** are heavier as length increases.

**Standard colors:** Black, Red, White, Blue, Green, Orange, Yellow, Gray. Other colors available upon request.

## Square Caps

Vinyl Square Caps are the perfect solution for finishing caps or shipping protection. The durable vinyl materials will not split or crack like hard plastic caps, and the flexibility makes installation quick and easy. Vinyl Square Caps are durable and tough enough to handle most industrial needs, yet they provide a great decorative touch to many retail packages. Custom diameters can be fabricated quickly and inexpensively.



### Product Features

- Wide variety of color choices
- Vibrant high gloss or flat matte finishes
- Available in high temperature resistant material
- Can be imprinted, punched, or sliced to meet your specifications
- Hundreds of design possibilities

### Applications

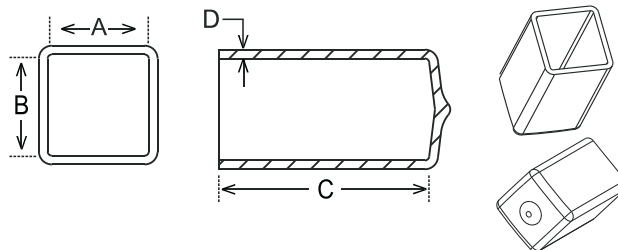
- Decorative end caps
- Painting masks
- Shipping protectors

### Square Caps

Inside Diameter "A & B"		Maximum Inside Length "C"		Wall Thickness "D"		Ready to Ship
In.	mm	In. ± .062	mm ± 1.57	In. ± .010	mm ± 0.25	
0.250	6.350	4.000	101.600	.065	1.65	
0.410	10.410	1.500	38.100	.065	1.65	✓
0.500	12.700	4.000	101.600	.065	1.65	
0.532	13.510	1.500	38.100	.065	1.65	✓
0.625	15.875	4.000	101.600	.065	1.65	
0.750	19.050	5.250	101.600	.065	1.65	
0.793	20.140	1.500	38.100	.065	1.65	✓
1.000	25.400	6.000	101.600	.065	1.65	
1.081	27.460	1.500	38.100	.065	1.65	✓
1.250	31.750	4.000	101.600	.065	1.65	
1.344	34.140	1.500	38.100	.065	1.65	✓
1.500	38.100	4.000	101.600	.065	1.65	
1.750	44.450	4.000	101.600	.065	1.65	
1.875	47.625	4.000	101.600	.065	1.65	
1.937	49.200	1.500	38.100	.065	1.65	
2.000	50.800	4.000	101.600	.065	1.65	
2.500	63.500	1.500	38.100	.065	1.65	
3.500	88.900	4.000	101.600	.065	1.65	
4.000	101.600	4.000	101.600	.065	1.65	

**NOTE:** "C" length is available in .062" (1.57mm) increments. Length tolerance is ± .062" (1.57 mm). Wall thickness "D" is measured approximately .250" (6.35 mm) from open end.

**Standard colors:** Black, Red, White, Blue, Green, Orange, Yellow, Gray. Other colors available upon request.





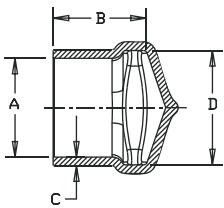
# Square End Caps



A unique end design makes these easy-to-use vinyl Square End Caps perfect for many applications. Use to protect threads, tubing and fittings from damage during shipping and processing. Placed on the ends of a round tube, these caps prevent the tube from rolling, avoiding damage and creating a convenient advantage for the storage of tubes.

## SE Series (Square End Caps)

Inside Diameter "A"		Max Inside Length "B"		Nominal Wall Thickness "C"		Square End "D"		Ready to Ship
In.	mm	In. ± .062	mm ± 1.57	In. ± .010	mm ± 0.25	In.	mm	
.296	7.52	1.250	31.75	.065	1.65	.437	11.10	✓
.406	10.31	1.250	31.75	.065	1.65	.562	14.28	✓
.531	13.49	2.000	50.80	.070	1.78	.687	17.45	✓
.687	17.45	2.000	50.80	.070	1.78	.875	22.23	✓
.796	20.22	2.000	50.80	.080	2.03	.921	23.39	✓
.921	23.39	2.000	50.80	.080	2.03	1.062	26.98	✓
1.125	28.58	2.000	50.80	.080	2.03	1.250	31.75	✓
1.313	33.35	2.000	50.80	.080	2.03	1.406	35.71	✓
1.656	42.06	2.000	50.80	.080	2.03	1.750	44.45	✓



**NOTE:** "B" length is available in .062" (1.57mm) increments. Length tolerance is ± .062" (1.57 mm). Wall thickness "C" is measured approximately .250" (6.35 mm) from open end.

**Standard colors:** Black, Red, White, Blue, Green, Orange, Yellow, Gray. Other colors available upon request.

### Product Features

- Large variety of color choices
- Vibrant high gloss or flat matte finishes
- Wide range of diameters with lengths up to 2" (50.80 mm)
- Can be imprinted, punched, or sliced to meet your specifications
- Hundreds of design possibilities

### Applications

- Decorative end caps
- Tube end caps
- Storage of tubing
- Shipping protectors



## EZ Tab Caps

Flexible vinyl E-Z Tabs are easy to remove, thanks to extra long pull tabs. Caps go on snug and stay put for a superior seal. Custom options available.

### Product Features

- Large variety of color choices
- Wide range of sizes
- High temperature resistant materials are available
- Can be imprinted, punched, or sliced to meet your specifications
- Hundreds of design possibilities including varying:
  - wall thickness
  - hardness
  - inside length
  - surface texture

### Applications

- Paint masks
- Thread protectors
- Shipping and storage protectors

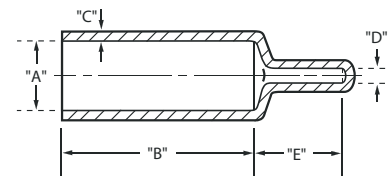


E-Z Tab Caps

Inside Diameter "A"		Max Inside Length "B"		Nominal Wall Thickness "C"		Inside Diameter "D"		Inside Length "E"		Ready to Ship
In.	mm	In. ± .062	mm ± 1.57	In. ± .010	mm ± 0.25	In.	mm	In.	mm	
.240	6.10	1.500	38.10	.055	1.40	.125	3.18	.625	15.88	✓
.303	7.70	1.500	38.10	.055	1.40	.125	3.18	.625	15.88	✓
.365	9.27	1.500	38.10	.055	1.40	.125	3.18	.625	15.88	✓
.386	9.80	1.500	38.10	.055	1.40	.125	3.18	.625	15.88	✓
.427	10.85	1.750	44.45	.055	1.40	.125	3.18	.625	15.88	✓
.490	12.45	1.750	44.45	.055	1.40	.125	3.18	.687	17.45	✓
.521	13.23	1.500	38.10	.055	1.40	.125	3.18	.687	17.45	✓
.530	13.46	1.500	38.10	.055	1.40	.125	3.18	.500	12.70	✓
.552	14.02	1.750	44.45	.055	1.40	.125	3.18	.687	17.45	✓
.615	15.62	1.750	44.45	.055	1.40	.125	3.18	.687	17.45	✓
.677	17.20	1.750	44.45	.055	1.40	.125	3.18	.812	20.63	✓
.735	18.67	1.500	38.10	.055	1.40	.125	3.18	.812	20.63	✓
.750	19.05	1.500	38.10	.055	1.40	.187	4.75	.855	21.72	✓
.797	20.24	1.500	38.10	.055	1.40	.187	4.75	.875	22.23	✓
.835	21.21	1.500	38.10	.055	1.40	.187	4.75	.500	12.70	✓
.860	21.84	1.500	38.10	.055	1.40	.187	4.75	.843	21.41	✓
.937	23.80	1.500	38.10	.055	1.40	.187	4.75	.875	22.23	✓
.985	25.02	1.750	44.45	.055	1.40	.187	4.75	.875	22.23	✓
1.060	26.92	1.500	38.10	.055	1.40	.187	4.75	.875	22.23	✓
1.125	28.58	1.500	38.10	.055	1.40	.187	4.75	.875	22.23	✓
1.250	31.75	1.500	38.10	.055	1.40	.187	4.75	.875	22.23	✓

**NOTE:** "B" length is available in .062" (1.57mm) increments. Length tolerance is ± .062" (1.57 mm). Wall thickness "C" is measured approximately .250" (6.35 mm) from open end.

**Standard colors:** Black, Red, White, Blue, Green, Orange, Yellow, Gray. Other colors available upon request.



# Grab Tab Caps



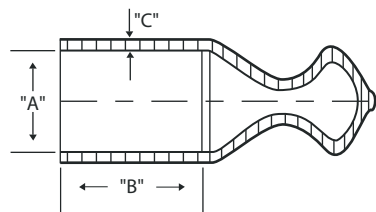
Grab Tabs have an indented tab surface, which reduces the amount of pinching pressure required during installation or removal. This quick and easy method hastens the continuous assembly operations during production. Custom options are available.

### Product Features

- Large variety of color choices
- Wide range of sizes
- High temperature resistant materials are available
- Can be imprinted, punched, or sliced to meet your specifications
- Hundreds of design possibilities including varying:
  - wall thickness
  - hardness
  - inside length
  - surface texture

## Grab Tab Caps

Inside Dimension "A"		Maximum Inside Length "B"		Wall Thickness "C"	
In.	mm	In. ± .062	mm ± 1.57	In. ± .010	mm ± 0.25
0.240	6.100	2.000	50.800	.055	1.40
0.302	7.670	2.000	50.800	.055	1.40
0.365	9.270	2.000	50.800	.055	1.40
0.458	11.630	2.000	50.800	.055	1.40
0.490	12.450	2.000	50.800	.055	1.40
0.552	14.020	2.000	50.800	.055	1.40
0.615	15.620	2.000	50.800	.055	1.40
0.677	17.200	2.000	50.800	.055	1.40
0.735	18.670	2.000	50.800	.055	1.40
0.750	19.050	2.000	50.800	.055	1.40



**NOTE:** "B" length is available in .062" (1.57mm) increments. Length tolerance is ± .062" (1.57 mm). Wall thickness "C" is measured approximately .250" (6.35 mm) from open end.

**Standard colors:** Black, Red, White, Blue, Green, Orange, Yellow, Gray. Other colors available upon request.

### Applications

- Paint masks - wet paint, e-coat and powder coating
- Thread protectors
- Shipping and storage protectors



## Hanger Caps

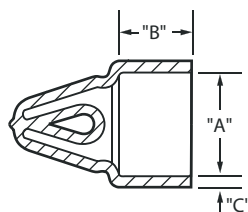
Colorful Hanger Caps add convenience to hundreds of products. Providing a snug, secure fit, these caps won't slide off even under the toughest conditions.

### Product Features

- Large variety of color choices
- Weather resistant
- Won't split or crack

### Applications

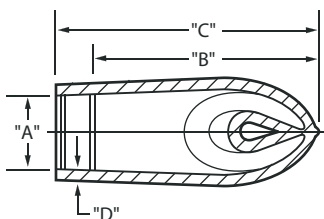
- Tools
- Toys
- Kitchen utensils



### Hanger Caps

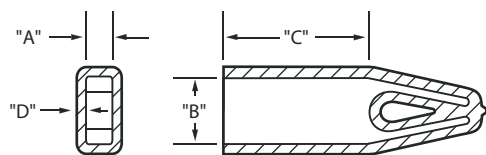
Inside Diameter "A"		Max Inside Length "B"		Nominal Wall Thickness "C"		Ready to Ship
In.	mm	In. ± .062	mm ± 1.57	In. ± .010	mm ± 0.25	
.531	13.49	1.750	44.45	.060	1.52	✓
.800	20.32	1.500	38.10	.060	1.52	✓
1.050	26.67	1.500	38.10	.060	1.52	✓
1.375	34.93	1.500	38.10	.060	1.52	✓
1.640	41.66	1.250	31.75	.060	1.52	✓
2.000	50.80	1.500	38.10	.060	1.52	✓
2.500	63.50	1.500	38.10	.060	1.52	✓
3.000	76.20	1.500	38.10	.060	1.52	✓

NOTE: Inside diameter tapers smaller with longer length.



### Hanger Tips - Round

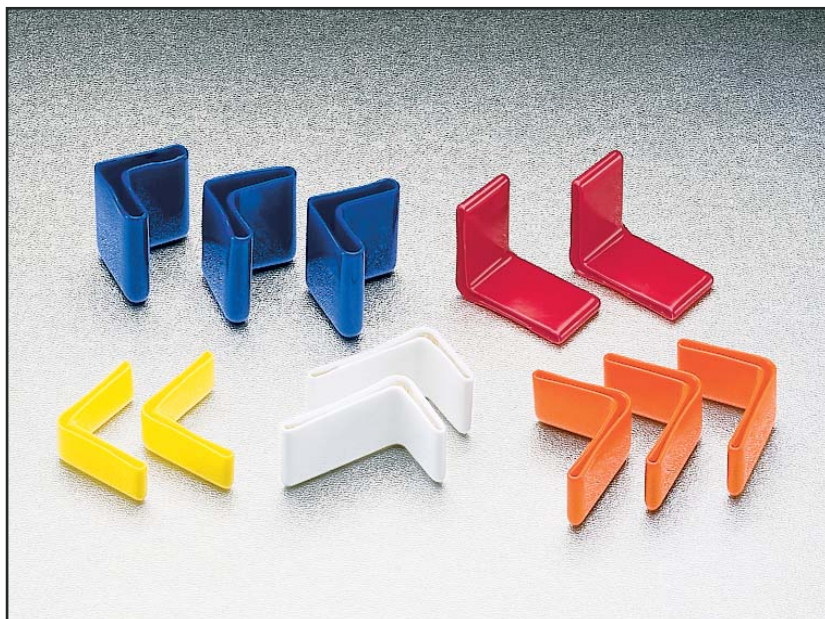
Item	Inside Diameter "A"		Max Outside Length "B"		Max Outside Length "C"		Nominal Wall Thickness "D"	
	In.	mm	In. ± .062	mm ± 1.57	In. ± .062	mm ± 1.57	In. ± .010	mm ± 0.25
VS-1	.750	19.05	2.125	53.98	-	-	.070	1.78
VL-1	.875	22.23	-	-	2.750	69.85	.070	1.78
VL-2	.875	22.23	-	-	3.125	79.38	.070	1.78



### Hanger Tips - Flat

Inside Dimension "A"		Inside Dimension "B"		Max Inside Length "C"		Nominal Wall Thickness "D"	
In.	mm	In.	mm	In. ± .062	mm ± 1.57	In. ± .010	mm ± 0.25
.124	3.15	.750	19.05	1.625	41.28	.070	1.78
.250	6.35	1.000	25.40	2.250	57.15	.070	1.78
.375	9.53	1.000	25.40	1.750	44.45	.070	1.78

# Angle Caps



The complete line of Angle Caps is molded from tough vinyl plastisol for easy application and a snug, secure fit. These caps won't slide off and won't split or crack. Using fast and inexpensive tooling options, Angle Caps can be made in a variety of special sizes.

### Product Features

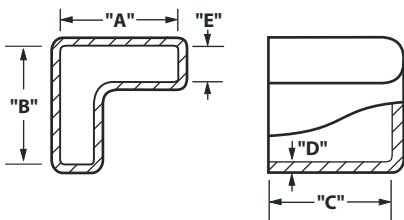
- Large variety of color choices
- Wide range of sizes
- Can be imprinted, punched, or sliced to meet your specifications
- Hundreds of design possibilities including varying:
  - wall thickness
  - hardness
  - inside length
  - surface texture

### Angle Caps

Inside Dimension "A"		Inside Dimension "B"		Max Inside Length "C"		Nominal Wall Thickness "D"		Inside Dimension "E"	
In.	mm	In.	mm	In. ± .062	mm ± 1.57	In. ± .010	mm ± 0.25	In.	mm
1.500	38.10	1.750	44.45	1.500	38.10	.060	1.52	.105	2.67
1.500	38.10	1.500	38.10	1.000	25.40	.060	1.52	.110	2.79
1.375	34.93	1.750	44.45	1.500	38.10	.060	1.52	.110	2.79
1.125	28.58	1.875	47.63	1.000	25.40	.060	1.52	.125	3.18
1.250	31.75	1.250	31.75	1.500	38.10	.060	1.52	.125	3.18
1.250	31.75	1.250	31.75	1.500	38.10	.070	1.78	.250	6.35

### Applications

- Bed frames
- Exercise equipment
- Workbenches



## Vented Caps

Vented Caps provide for the venting of gases that can build up in sealed environments or to relieve the vacuum caused by a cooling product or component.

### Product Features

- Large variety of color choices
- Wide range of sizes
- Can be imprinted, punched, or sliced to meet your specifications
- Hundreds of design possibilities including varying:
  - wall thickness
  - hardness
  - inside length
  - surface texture

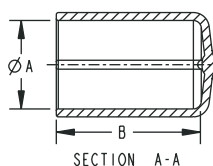
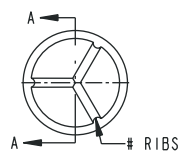
### Applications

- E-Coating
- Powder Coating

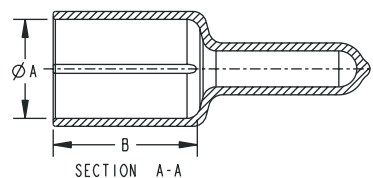
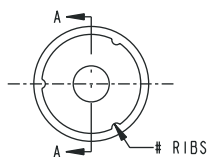


### Vented Caps

Inside Dimension "A"		Maximum Inside Length "B"		Number of Ribs	Cap Style
In.	mm	In. ± .062	mm ± 1.57		
0.614	15.60	1.500	38.10	3	S-Cap
0.687	17.45	1.500	38.10	1	EZ Tab
0.700	17.78	1.062	26.97	1	S-Cap
0.825	20.96	1.750	44.45	3	EZ Tab
0.835	21.21	0.813	20.65	1	S-Cap
0.937	23.80	1.750	44.45	1	EZ Tab
1.240	31.50	1.062	26.97	1	S-Cap
1.375	34.93	1.500	38.10	1	S-Cap
1.420	36.07	1.500	38.10	3	S-Cap
1.625	41.28	2.000	50.80	3	S-Cap



S-Cap Style



E-Z Tab Style



# End Caps



Use C Series End Caps to protect threaded or non-threaded tubing, rods, pipe or shipping tubes. Snug friction grip provides low cost protection.

### Product Features

- Low cost
- Use on parts with or without threads
- Excellent protection

### Applications

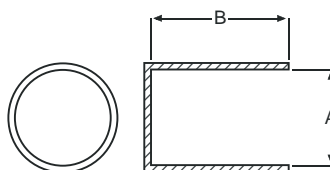
- Tubing, rods, pipes and shipping containers

## End Caps

Part Number	"A"		"B"		Ready to Ship
	In.	mm.	In.	mm.	
C-1/8	0.125	3.18	0.590	14.99	✓
C-5/32	0.156	3.96	0.560	14.22	✓
C-3/16	0.187	4.75	0.590	14.99	✓
C-7/32	0.219	5.56	0.750	19.05	✓
C-1/4	0.250	6.35	0.880	22.35	✓
C-9/32	0.281	7.14	0.750	19.05	✓
C-5/16	0.313	7.95	0.880	22.35	✓
C-3/8	0.375	9.53	0.880	22.35	✓
C-7/16	0.438	11.13	0.880	22.35	✓
C-1/2	0.500	12.70	0.880	22.35	✓
C-9/16	0.563	14.30	0.880	22.35	✓
C-5/8	0.625	15.88	0.880	22.35	✓
C-11/16	0.687	17.45	0.880	22.35	✓
C-23/32	0.718	18.24	0.715	18.16	✓
C-3/4	0.750	19.05	0.880	22.35	✓
C-25/32	0.781	19.84	1.000	25.40	✓
C-13/16	0.813	20.65	0.880	22.35	✓
C-7/8	0.875	22.23	0.880	22.35	✓
C-15/16	0.938	23.83	1.000	25.40	✓
C-1	1.000	25.40	1.000	25.40	✓

## End Caps Continued

Part Number	"A"		"B"		Ready to Ship
	In.	mm.	In.	mm.	
C-1-1/16	1.063	27.00	1.000	25.40	✓
C-1-1/8	1.125	28.58	1.000	25.40	✓
C-1-3/16	1.187	30.15	1.000	25.40	✓
C-1-1/4	1.250	31.75	1.000	25.40	✓
C-1-5/16	1.312	33.32	1.000	25.40	✓
C-1-3/8	1.375	34.93	1.000	25.40	✓
C-1-1/2	1.500	38.10	1.000	25.40	✓
C-1-5/8	1.625	41.28	1.000	25.40	✓
C-1-3/4	1.750	44.45	1.000	25.40	✓
C-1-7/8	1.875	47.63	1.000	25.40	✓
C-2	2.000	50.80	0.880	22.35	✓
C-2-1/8	2.125	53.98	1.000	25.40	✓
C-2-1/4	2.250	57.15	0.880	22.35	✓
C-2-3/8	2.375	60.33	0.880	22.35	✓
C-2-1/2	2.500	63.50	0.880	22.35	✓
C-2-3/4	2.750	69.85	1.000	25.40	✓
C-3	3.000	76.20	1.000	25.40	✓
C-3-1/8	3.125	79.38	1.380	35.05	✓
C-3-1/4	3.250	82.55	1.250	31.75	✓
C-3-1/2	3.500	88.90	1.380	35.05	✓



## Tear Caps

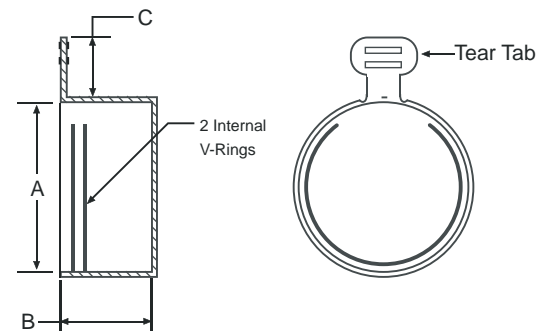
Versatile, polyethylene Tear Caps are available for pipe threads and standard threads. Caps have a side tab that tears away when pulled down.

### Product Features

- Available in over 20 sizes.
- Sizes available to fit both SAE and NPT thread sizes.
- Economical
- Easily removable

### Applications

- Rods
- Pipes
- Tubing



### NPT Sizes

Part Number	Thread Size	"B"	Ready to Ship
		In.	
CZ-1/8	1/8	0.320	✓
CZ-1/4	1/4	0.490	✓
CZ-3/8	3/8	0.490	✓
CZ-1/2	1/2	0.645	✓
CZ-3/4	3/4	0.650	✓
CZ-1	1	0.820	✓
CZ-1-1/4	1-1/4	0.820	✓
CZ-1-1/2	1-1/2	0.830	✓
CZ-2	2	0.820	✓

### Tear Caps

Part Number	Thread Size	"A"		"B"		"C"		Ready to Ship
		In.	mm	In.	mm	In.	mm	
CZ-5	3/8-24	0.365	9.27	0.440	11.18	0.421	10.69	✓
CZ-10	7/16-20	0.427	10.85	0.440	11.18	0.421	10.69	✓
CZ-15	1/2-20	0.490	12.45	0.495	12.57	0.421	10.69	✓
CZ-20	9/16-18	0.552	14.02	0.475	12.07	0.421	10.69	✓
CZ-25	5/8-18	0.615	15.62	0.480	12.19	0.421	10.69	✓
CZ-30	11/16-16	0.677	17.20	0.475	12.07	0.421	10.69	✓
CZ-35	3/4-16	0.740	18.80	0.560	14.22	0.421	10.69	✓
CZ-40	13/16-12	0.802	20.37	0.560	14.22	0.421	10.69	✓
CZ-45	7/8-14	0.865	21.97	0.700	17.78	0.421	10.69	✓
CZ-50	1-14	0.990	25.15	0.695	17.65	0.421	10.69	✓
CZ-55	1-1/16	1.052	26.72	0.830	21.08	0.421	10.69	✓
CZ-60	1-3/16-12	1.177	29.90	0.750	19.05	0.421	10.69	✓
CZ-65	1-5/16-12	1.302	33.07	0.740	18.80	0.421	10.69	✓
CZ-70	1-7/16-12	1.427	36.25	0.750	19.05	0.421	10.69	✓
CZ-75	1-5/8-12	1.615	41.02	0.825	20.96	0.421	10.69	✓
CZ-80	1-11/16-12	1.677	42.60	0.825	20.96	0.421	10.69	✓
CZ-85	1-7/8-12	1.865	47.37	0.940	23.88	0.421	10.69	✓
CZ-90	2-1/2-12	2.490	63.25	1.200	30.48	0.421	10.69	✓



# Threaded Caps



Our Threaded Caps seal exceptionally well against dirt and moisture. The knurled exterior allows for an easy on/off application. Threaded Caps provide a positive seal for low pressure requirements, and are suitable for JIC/UNF threaded fittings.

### Product Features

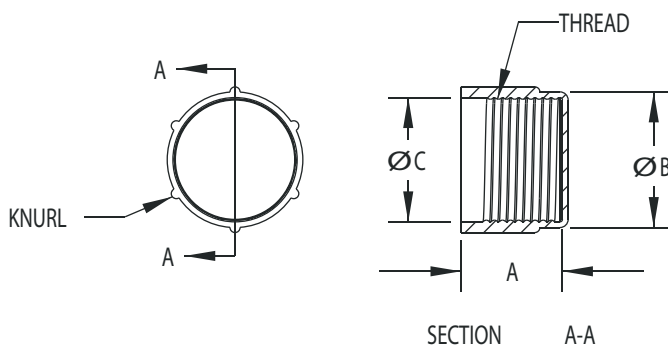
- ASAE Threads 3/8"-24 to 1-1/16"-12
- Protects against moisture, dirt and dust
- Economical

### Applications

- Rods
- Pipes
- Tubing

### Threaded Caps

Part Number	Standard Thread Size	Tubing O.D. Size	"A"	"B"	"C"	Knurls	Ready to Ship
		In.	In.	In.	In.		
CT-5	3/8-24	3/16	0.470	0.440	0.380	4	✓
CT-10	7/16-20	1/4	0.470	0.500	0.443	4	✓
CT-15	1/2-20	5/16	0.470	0.560	0.505	6	✓
CT-20	5/8-18	3/8	0.813	0.690	0.630	6	✓
CT-25	3/4-16	1/2	0.570	0.810	0.755	6	✓
CT-30	3/4 NPT	-	0.750	1.098	1.038	8	✓
CT-35	7/8-14	5/8	0.680	0.940	0.880	6	✓
CT-40	1-14	-	0.780	1.060	1.005	6	✓
CT-45	1-1/16-12	3/4	0.750	1.120	1.068	8	✓



## Electrical Connector Caps

The RC Series Electrical Connector Caps are designed to protect connectors from dust, dents and moisture. Flanged design allows easy application and removal in areas not readily accessible.



### Product Features

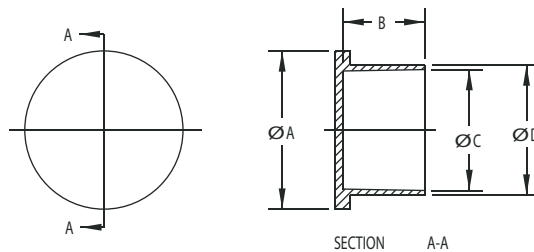
- Conforms to MIL Standard Spec MS 90376
- Low density polyethylene
- Economical

### Applications

- Thread Protectors
- Tubing End Protectors

### Electrical Connector Caps

Part Number	Thread Size	"A"	"B"	"C"	"D"	Ready to Ship	
		In.	In.	In.	In.		
CE-5	1/2	8R	0.740	0.500	0.480	0.540	✓
CE-10	9/16		0.780	0.500	0.551	0.611	✓
CE-15	5/8	10R	0.840	0.500	0.605	0.665	✓
CE-20	3/4	12R	0.970	0.500	0.720	0.775	✓
CE-25	7/8	14R	1.125	0.500	0.850	0.905	✓
CE-30	1	16R	1.220	0.500	0.973	1.035	✓
CE-35	1-1/8	18R	1.330	0.562	1.093	1.155	✓
CE-40	1-1/4	20R	1.465	0.562	1.231	1.301	✓
CE-45	1-3/8	22R	1.590	0.562	1.340	1.410	✓
CE-50	1-1/2	24R	1.700	0.562	1.463	1.533	✓





# Vinyl Plus Plugs

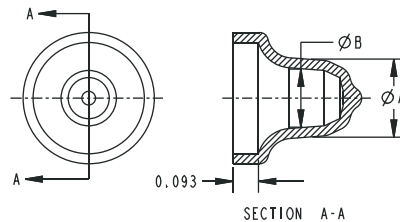
More flexible than rigid poly plugs, Plus Plugs are easier to insert and remove with our unique 360° pull tab design. Plus Plugs conform to internal threads and won't move during manufacturing and shipping.

### Product Features

- One size fits several different ports
- High temperature resistant material available
- Plugs won't shred, split or crack

### Applications

- Masks (for painting, plating, coating, shot blasting)
- Thread protectors
- Shipping protectors
- Moisture and contamination barriers



## Vinyl Plus Plugs

Item	"A" Min		"A" Max		"B"		To Fit N.P.T.				To Fit UN Thread				Ready to Ship
	In.	mm	In.	mm	In.	mm	Cap		Plug		Cap		Plug		
							In.	mm	In.	mm	In.	mm	In.	mm	
SR1	.280	7.11	.290	7.37	.220	5.59	-	-	-	-	-	-	5/16	7.94	
SR2	.370	9.40	.390	9.91	.288	7.32	-	-	1/8	3.18	5/16	7.94	3/8	9.53	✓
SR25	.420	10.67	.440	11.18	.338	8.59	1/8	3.18	-	-	3/8	9.53	7/16	11.11	✓
SR3	.485	12.32	.505	12.83	.362	9.20	-	-	1/4	6.35	3/8	9.53	1/2	12.70	✓
SR35	.535	13.59	.555	14.10	.443	11.25	1/4	6.35	-	-	1/2	12.70	9/16	14.29	✓
SR4	.640	16.26	.660	16.76	.513	13.03	3/8	9.53	3/8	9.53	9/16	14.29	5/8	15.88	✓
SR5	.795	20.19	.815	20.70	.679	17.25	-	-	1/2	12.70	5/8	15.88	3/4	19.05	✓
SR55	.840	21.34	.860	21.84	.740	18.80	1/2	12.70	-	-	3/4	19.05	7/8	22.23	✓
SR6	1.010	25.65	1.035	26.29	.893	22.68	3/4	19.05	3/4	19.05	1 1/16	26.99	1 1/16	26.99	✓
SR65	1.083	27.51	1.123	28.52	.973	24.21	-	-	-	-	-	-	-	-	
SR7	1.260	32.00	1.285	32.64	1.143	29.03	1	25.40	1	25.40	1 3/16	30.16	1 3/16	30.16	✓
											1 1/4	31.75	1 1/4	31.75	
											1 5/16	33.34	1 5/16	33.34	
SR 8	1.658	42.11	1.698	43.13	1.548	39.32	1 1/4	31.75	1 1/4	31.75	1 9/16	39.69	1 9/16	39.69	
											1 5/8	41.28	1 5/8	41.28	
											1 11/16	42.86	1 11/16	42.86	

# Rubber Seal Plugs

Rubber Seal Plugs are designed for plugging copper tubing and components in the A/C and refrigeration industry. Standard color is black, but custom colors are available. Application Specialists are available to guide you in making the right selection.



## Product Features

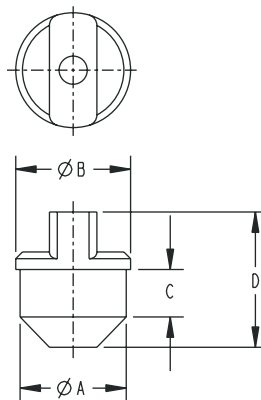
- Hole in tab allows for use of plunger for insertion of gases
- Special material blend reseals after needle insertion of gases
- Tab allows for ease of removal

## Applications

- Copper tubing, dryers, filters
- Air Conditioning industry
- Refrigeration industry

## Rubber Seal Plugs

"A" Plug O.D.		"B" Flange O.D.		"C" Side Height		"D" Overall Length	
In.	mm	In.	mm	In.	mm	In.	mm
0.234	5.944	0.375	9.525	0.375	9.525	0.906	23.012
0.313	7.950	0.413	10.490	0.438	11.125	1.063	27.000
0.335	8.509	0.435	11.049	0.438	11.125	1.063	27.000
0.375	9.525	0.475	12.065	0.438	11.125	1.063	27.000
0.470	11.938	0.570	14.478	0.438	11.125	1.188	30.175
0.610	15.494	0.710	18.034	0.490	12.446	1.261	32.029
0.628	15.951	0.750	19.050	0.688	17.475	1.495	37.973
0.703	17.856	0.783	19.888	0.438	11.125	1.187	30.150
0.828	21.031	0.908	23.063	0.438	11.125	1.187	30.150
0.980	24.892	1.060	26.924	0.438	11.125	1.249	31.725
1.125	28.575	1.375	34.925	0.750	19.050	1.619	41.123



# Side Pull Plugs



This series of polyethylene plugs are designed for easy removal in those hard to reach locations.

### Product Features

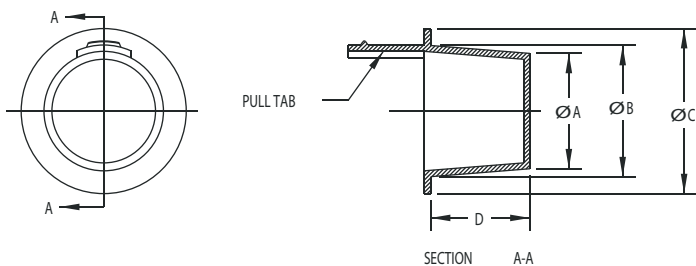
- Ideal for NPT and standard threads
- Side pull aids in removal
- Available in sizes from 3/8" to 2" diameter

### Applications

- Thread Protectors
- Tubing End Protectors
- Hydraulic Fittings

## Side Pull Plugs

Part Number	Common Plug Application	"A"		"B"		"C"		"D"		Ready to Ship
		In.	mm	In.	mm	In.	mm	In.	mm	
PS-30	3/8 Std. Thread	0.299	7.59	0.365	9.27	0.500	12.70	0.380	9.65	✓
PS-40	1/8 NPT	0.330	8.38	0.396	10.06	0.530	13.46	0.380	9.65	✓
PS-55	-	0.390	9.91	0.456	11.58	0.590	14.99	0.380	9.65	✓
PS-60	1/4 NPT, 1/2 Std. Thread	0.419	10.64	0.485	12.32	0.630	16.00	0.380	9.65	✓
PS-65	-	0.447	11.35	0.513	13.03	0.660	16.76	0.380	9.65	✓
PS-70	9/16 Std. Thead	0.471	11.96	0.547	13.89	0.690	17.53	0.440	11.18	✓
PS-80	5/8 Std. Thread	0.532	13.51	0.608	15.44	0.750	19.05	0.440	11.18	✓
PS-90	3/8 NPT	0.550	13.97	0.631	16.03	0.750	19.05	0.470	11.94	✓
PS-100	-	0.580	14.73	0.667	16.94	0.810	20.57	0.500	12.70	✓
PS-120	-	0.675	17.15	0.755	19.18	0.880	22.35	0.500	12.70	✓
PS-125	1/2 NPT	0.690	17.53	0.788	20.02	0.940	23.88	0.560	14.22	✓
PS-165	3/4 NPT	0.866	22.00	0.975	24.77	1.130	28.70	0.630	16.00	✓
PS-170	-	0.915	23.24	1.040	26.42	1.160	29.46	0.690	17.53	✓
PS-190	1 NPT	1.094	27.79	1.215	30.86	1.410	35.81	0.750	19.05	✓
PS-200	-	1.175	29.85	1.284	32.61	1.440	36.58	0.630	16.00	✓
PS-240	1-1/4 NPT	1.447	36.75	1.600	40.64	1.750	44.45	0.880	22.35	✓
PS-275	1-1/2 NPT	1.780	45.21	1.950	49.53	2.130	54.10	1.000	25.40	✓



## T-Plugs

T-Plugs are an excellent option when you need a low-cost, effective product to protect tubing ends, threads and ports during shipping and storage. The tapered design goes on easily and stays put.

### Product Features

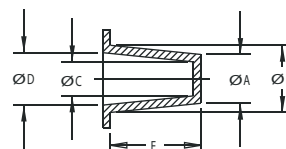
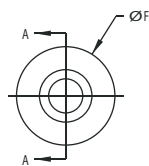
- Fits most SAE type fittings, NPT threads and unthreaded standard weight pipe
- Also suitable for JIC/UNF and BSP thread fittings
- Can be used as a cap or a plug

### Applications

- Tube ends
- Shipping and storage protection



**Ready to Ship** millions in stock!



SECTION A-A

T-Plugs

Part Number	As Plug				As Cap				Depth "E"		Flange "F"		Common Applications		Ready to Ship
	"A"		"B"		"C"		"D"						As Plug	As Cap	
	In.	mm	In.	mm	In.	mm	In.	mm	In.	mm	In.	mm			
T-5	0.116	2.95	0.182	4.62	0.053	1.35	0.120	3.05	0.380	9.65	0.310	7.87			✓
T-10	0.145	3.68	0.205	5.21	0.079	2.01	0.150	3.81	0.380	9.65	0.410	10.41			✓
T-15	0.173	4.39	0.240	6.10	0.111	2.82	0.177	4.50	0.380	9.65	0.380	9.65			✓
T-17	0.187	4.75	0.251	6.38	0.124	3.15	0.196	4.98	0.345	8.76	0.372	9.45			✓
T-18	0.209	5.31	0.266	6.76	0.148	3.76	0.212	5.38	0.347	8.81	0.435	11.05			✓
T-20	0.236	5.99	0.302	7.67	0.174	4.42	0.240	6.10	0.380	9.65	0.440	11.18	5/16 std thrd		✓
T-25	0.267	6.78	0.335	8.51	0.205	5.21	0.273	6.93	0.380	9.65	0.470	11.94			✓
T-30	0.299	7.59	0.365	9.27	0.235	5.97	0.302	7.67	0.380	9.65	0.500	12.70	3/8 std thrd	15/64 std thrd	✓
T-40	0.330	8.38	0.396	10.06	0.267	6.78	0.333	8.46	0.380	9.65	0.530	13.46	1/8 NPT		✓
T-45	0.361	9.17	0.427	10.85	0.298	7.57	0.365	9.27	0.380	9.65	0.560	14.22	7/16 std thrd		✓
T-55	0.390	9.91	0.456	11.58	0.327	8.31	0.394	10.01	0.380	9.65	0.590	14.99		3/8 std thrd	✓
T-60	0.419	10.64	0.485	12.32	0.356	9.04	0.422	10.72	0.380	9.65	0.630	16.00	1/4 NPT- 1/2 std thrd	1/8 NPT	✓
T-65	0.447	11.35	0.513	13.03	0.385	9.78	0.451	11.46	0.380	9.65	0.660	16.76		7/16 std thrd	✓
T-70	0.471	11.96	0.547	13.89	0.409	10.39	0.485	12.32	0.440	11.18	0.690	17.53	9/16 std thrd	1/2 std thrd	✓
T-75	0.500	12.70	0.576	14.63	0.440	11.18	0.516	13.11	0.440	11.18	0.720	18.29			✓
T-80	0.532	13.51	0.608	15.44	0.468	11.89	0.545	13.84	0.440	11.18	0.750	19.05	5/8 std thrd	1/4 NPT	✓
T-90	0.550	13.97	0.631	16.03	0.487	12.37	0.568	14.43	0.470	11.94	0.750	19.05	3/8 NPT	9/16 std thrd	✓
T-100	0.580	14.73	0.667	16.94	0.518	13.16	0.605	15.37	0.500	12.70	0.810	20.57		5/8 std thrd	✓
T-105	0.610	15.49	0.695	17.65	0.549	13.94	0.634	16.10	0.500	12.70	0.840	21.34			✓
T-110	0.640	16.26	0.727	18.47	0.578	14.68	0.664	16.87	0.500	12.70	0.880	22.35	3/4 std thrd		✓

T-Plugs Continued

Part Number	As Plug				As Cap				Depth "E"		Flange "F"		Common Applications		Ready to Ship
	"A"		"B"		"C"		"D"						As Plug	As Cap	
	In.	mm	In.	mm	In.	mm	In.	mm	In.	mm	In.	mm			
T-120	0.675	17.15	0.755	19.18	0.613	15.57	0.693	17.60	0.500	12.70	0.880	22.35		3/8 NPT	✓
T-125	0.690	17.53	0.788	20.02	0.628	15.95	0.726	18.44	0.560	14.22	0.940	23.88	1/2 NPT		✓
T-130	0.725	18.42	0.823	20.90	0.663	16.84	0.761	19.33	0.560	14.22	0.970	24.64		3/4 std thrd	✓
T-140	0.750	19.05	0.848	21.54	0.687	17.45	0.785	19.94	0.560	14.22	1.000	25.40	7/8 std thrd		✓
T-145	0.802	20.37	0.911	23.14	0.740	18.80	0.849	21.56	0.630	16.00	1.060	26.92		1/2 NPT	✓
T-150	0.815	20.70	0.930	23.62	0.753	19.13	0.868	22.05	0.630	16.00	1.090	27.69		7/8 std thrd	✓
T-163	0.867	22.02	0.971	24.66	0.807	20.50	0.910	23.11	0.715	18.16	1.130	28.70	3/4 NPT		✓
T-165	0.866	22.00	0.975	24.77	0.803	20.40	0.912	23.16	0.630	16.00	1.130	28.70	3/4 NPT		✓
T-170	0.915	23.24	1.040	26.42	0.855	21.72	0.980	24.89	0.690	17.53	1.160	29.46	1-1/16 std thrd		✓
T-180	0.964	24.49	1.090	27.69	0.901	22.89	1.027	26.09	0.750	19.05	1.250	31.75			✓
T-183	0.984	24.99	1.054	26.77	0.913	23.19	0.988	25.10	0.468	11.89	1.253	31.83		3/4 NPT	✓
T-185	0.995	25.27	1.145	29.08	0.933	23.70	1.083	27.51	0.750	19.05	1.310	33.27		1-1/16 std thrd	✓
T-190	1.094	27.79	1.215	30.86	1.031	26.19	1.152	29.26	0.750	19.05	1.410	35.81	1 NPT		✓
T-200	1.175	29.85	1.284	32.61	1.113	28.27	1.222	31.04	0.630	16.00	1.440	36.58			✓
T-205	1.224	31.09	1.355	34.42	1.161	29.49	1.292	32.82	0.750	19.05	1.500	38.10	1-5/16 std thrd		✓
T-210	1.235	31.37	1.360	34.54	1.173	29.79	1.298	32.97	0.810	20.57	1.500	38.10		1 NPT - 1-5/16 std thrd	✓
T-215	1.285	32.64	1.346	34.19	1.227	31.17	1.288	32.72	0.380	9.65	1.470	37.34			✓
T-220	1.312	33.32	1.465	37.21	1.249	31.72	1.402	35.61	0.880	22.35	1.630	41.40			✓
T-225	1.239	31.47	1.507	38.28	1.169	29.69	1.437	36.50	0.750	19.05	1.630	41.40			✓
T-240	1.447	36.75	1.600	40.64	1.384	35.15	1.537	39.04	0.880	22.35	1.750	44.45	1-1/4 NPT		✓
T-245	1.513	38.43	1.600	40.64	1.451	36.86	1.537	39.04	0.500	12.70	1.750	44.45	1-5/8 std thrd		✓
T-247	1.516	38.51	1.601	40.67	1.456	36.98	1.541	39.14	0.716	18.19	1.753	44.53			✓
T-250	1.560	39.62	1.682	42.72	1.498	38.05	1.620	41.15	0.750	19.05	1.880	47.75	1-3/4 std thrd	1-1/4 NPT - 1-5/8 std thrd	✓
T-255	1.630	41.40	1.750	44.45	1.568	39.83	1.688	42.88	0.750	19.05	1.940	49.28			✓
T-265	1.750	44.45	1.880	47.75	1.688	42.88	1.818	46.18	0.750	19.05	2.000	50.80			✓
T-270	1.781	45.24	1.805	45.85	1.722	43.74	1.746	44.35	0.380	9.65	2.000	50.80	1-1/2 NPT-1-7/8 std thrd		✓
T-275	1.780	45.21	1.950	49.53	1.718	43.64	1.888	47.96	1.000	25.40	2.130	54.10		1-1/2 NPT - 1-7/8 std thrd	✓
T-280	1.844	46.84	2.000	50.80	1.781	45.24	1.938	49.23	1.000	25.40	2.130	54.10			✓
T-285	1.900	48.26	2.076	52.73	1.837	46.66	2.013	51.13	1.000	25.40	2.250	57.15			✓
T-295	1.975	50.17	2.132	54.15	1.913	48.59	2.070	52.58	1.000	25.40	2.250	57.15			✓
T-300	2.015	51.18	2.147	54.53	1.953	49.61	2.085	52.96	0.750	19.05	2.310	58.67			✓
T-305	2.067	52.50	2.243	56.97	2.005	50.93	2.181	55.40	1.000	25.40	2.440	61.98	2-1/4 std thrd		✓
T-310	2.125	53.98	2.406	61.11	2.063	52.40	2.344	59.54	1.000	25.40	2.530	64.26	2 NPT		✓
T-315	2.136	54.25	2.312	58.72	2.074	52.68	2.250	57.15	1.000	25.40	2.560	65.02		2-1/4 std thrd	✓
T-320	2.230	56.64	2.260	57.40	2.168	55.07	2.198	55.83	0.500	12.70	2.500	63.50			✓
T-325	2.298	58.37	2.464	62.59	2.235	56.77	2.401	60.99	1.000	25.40	2.630	66.80		2 NPT	✓
T-330	2.307	58.60	2.650	67.31	2.245	57.02	2.588	65.74	1.250	31.75	2.780	70.61		2-1/2 std thrd	✓
T-335	2.395	60.83	2.602	66.09	2.333	59.26	2.540	64.52	1.030	26.16	2.810	71.37			✓
T-340	2.457	62.41	2.750	69.85	2.395	60.83	2.688	68.28	1.000	25.40	2.880	73.15			✓
T-345	2.480	62.99	2.644	67.16	2.418	61.42	2.582	65.58	0.630	16.00	2.780	70.61			✓
T-350	2.555	64.90	2.690	68.33	2.493	63.32	2.628	66.75	0.630	16.00	2.880	73.15			✓
T-355	2.641	67.08	2.790	70.87	2.579	65.51	2.728	69.29	0.750	19.05	2.940	74.68	2-1/2 NPT.		✓
T-360	2.760	70.10	3.005	76.33	2.685	68.20	2.947	74.85	1.000	25.40	3.150	80.01	3 std thrd		✓
T-365	2.849	72.36	2.980	75.69	2.787	70.79	2.918	74.12	0.750	19.05	3.250	82.55		2-1/2 NPT	✓
T-370	2.975	75.57	3.103	78.82	2.915	74.04	3.041	77.24	0.750	19.05	3.340	84.84			✓
T-375	2.982	75.74	3.245	82.42	2.912	73.96	3.175	80.65	1.000	25.40	3.380	85.85			✓
T-380	3.090	78.49	3.370	85.60	3.020	76.71	3.300	83.82	1.000	25.40	3.500	88.90			✓
T-385	3.270	83.06	3.562	90.47	3.200	81.28	3.492	88.70	1.130	28.70	3.690	93.73	3 NPT		✓
T-390	3.325	84.46	3.457	87.81	3.245	82.42	3.377	85.78	0.750	19.05	3.630	92.20		3 NPT	✓
T-395	3.470	88.14	3.600	91.44	3.410	86.61	3.540	89.92	0.750	19.05	3.880	98.55			✓
T-405	3.680	93.47	3.800	96.52	3.610	91.69	3.730	94.74	0.750	19.05	4.000	101.60			✓
T-410	3.790	96.27	3.920	99.57	3.710	94.23	3.840	97.54	0.750	19.05	4.120	104.65	3-1/2 NPT	3-1/2 NPT	✓
T-415	3.930	99.82	4.070	103.38	3.860	98.04	4.000	101.60	0.750	19.05	4.380	111.25			✓
T-420	4.020	102.11	4.140	105.16	3.940	100.08	4.070	103.38	0.750	19.05	4.530	115.06			✓
T-430	4.270	108.46	4.430	112.52	4.180	106.17	4.340	110.24	0.880	22.35	4.880	123.95	4 NPT		✓
T-435	4.370	111.00	4.620	117.35	4.290	108.97	4.540	115.32	1.000	25.40	5.000	127.00		4 NPT	✓

# Electrical Connector Plugs

Electrical Connector Plugs are designed to protect electrical connectors from moisture, dirt and dust. These low density polyethylene plugs are used for tubing and fittings. Flanged style offers easy removal for a wide variety of applications.

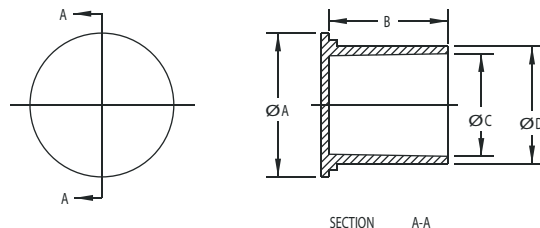


## Product Features

- Easy removal
- Seals out contaminants

## Applications

- Thread Protectors
- Tubing End Protectors



Electrical Connector Plugs

Part Number	Thread Size		"A"		"B"		"C"		"D"		Ready to Ship
			In.	mm	In.	mm	In.	mm	In.	mm	
PE-5	1/2	8Y	0.670	17.02	0.625	15.88	0.413	10.49	0.483	12.27	✓
PE-10	5/8	10Y	0.750	19.05	0.625	15.88	0.530	13.46	0.595	15.11	✓
PE-15	3/4	12Y	0.860	21.84	0.625	15.88	0.655	16.64	0.715	18.16	✓
PE-20	7/8	14Y	1.031	26.19	0.625	15.88	0.785	19.94	0.845	21.46	✓
PE-25	1	16Y	1.125	28.58	0.625	15.88	0.893	22.68	0.963	24.46	✓
PE-30	1-1/8	18Y	1.250	31.75	0.625	15.88	1.028	26.11	1.088	27.64	✓
PE-35	1-1/4	20Y	1.406	35.71	0.625	15.88	1.150	29.21	1.215	30.86	✓
PE-40	1-3/8	22Y	1.500	38.10	0.625	15.88	1.270	32.26	1.340	34.04	✓
PE-45	1-1/2	24Y	1.640	41.66	0.625	15.88	1.390	35.31	1.460	37.08	✓



# Threaded Plugs



Threaded plugs are designed for use on flared fittings. Parts are knurled to aid the insertion and removal. Threaded Plugs create a positive seal for low pressure requirements.

### Product Features

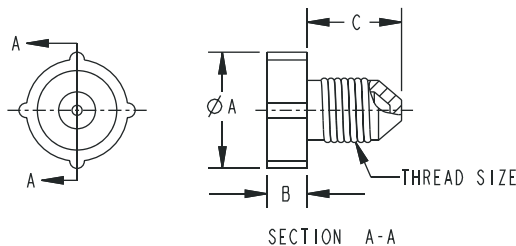
- Knurled for easy on and off motions
- Seals out contaminants
- Suitable for JIC/UNF threaded fittings

### Applications

- Thread Protectors
- Painting Masks
- Shipping Protectors

### Threaded Plugs

Part Number	Thread Size	Tubing Size		"A"	"B"	"C"	Ready to Ship
		In.	mm	In.	In.	In.	
PT-5	5/16-24	1/8	3.18	0.440	0.180	0.440	✓
PT-10	3/8-24	3/16	4.76	0.500	0.180	0.460	✓
PT-15	7/16-20	1/4	6.35	0.620	0.190	0.530	✓
PT-20	1/2-20	5/16	7.94	0.680	0.250	0.530	✓
PT-25	9/16-18	3/8	9.53	0.810	0.250	0.500	✓
PT-30	5/8-18	3/8	9.53	0.810	0.250	0.593	✓
PT-35	3/4-16	1/2	12.70	0.940	0.250	0.750	✓
PT-40	7/8-14	5/8	15.88	1.060	0.250	0.870	✓
PT-45	1-1/16-12	3/4	19.05	1.250	0.250	0.890	✓
PT-50	1-1/16-14	3/4	19.05	1.310	0.250	1.120	✓
PT-55	1-5/16-12	1	25.40	1.500	0.250	0.930	✓



# FC Flange Covers



This design allows for a quick and simple application. The fit is snug and conforms to a wide variety of flanged and beaded tubes. FC Flange Covers are reusable and won't crack or split.

### Product Features

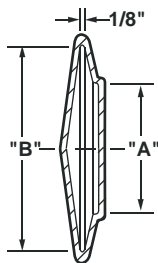
- Fits most standard joints and flared tubing
- Resists weather, moisture and chemicals

### Applications

- Shipping and storage caps
- Paint masks
- Dust and moisture barriers

## FC Flange Covers

Item	Inside Diameter "A"		Inside Diameter "B"		Ready to Ship
	In.	mm	In.	mm	
FC-068	.680	17.27	1.310	33.27	✓
FC-093	.930	23.62	1.550	39.37	✓
FC-100	1.000	25.40	1.620	41.15	✓
FC-131	1.310	33.27	1.930	49.02	✓
FC-150	1.500	38.10	2.195	55.75	✓
FC-200	2.000	50.80	2.695	68.45	✓
FC-218	2.180	55.37	2.860	72.64	✓
FC-250	2.500	63.50	3.180	80.77	✓
FC-293	2.930	74.42	3.560	90.42	✓
FC-300	3.000	76.20	3.600	91.44	✓
FC-350	3.500	88.90	4.155	105.54	✓
FC-400	4.000	101.60	4.690	119.13	✓
FC-425	4.250	107.95	4.940	125.48	✓
FC-450	4.500	114.30	5.190	131.83	✓
FC-475	4.750	120.65	5.440	138.18	✓
FC-500	5.000	127.00	5.690	144.53	✓
FC-525	5.250	133.35	5.940	150.88	✓
FC-550	5.500	139.70	6.190	157.23	✓
FC-600	6.000	152.40	6.690	169.93	✓
FC-650	6.500	165.10	7.190	182.63	✓



**Ready to Ship** millions in stock!  
millions

# SR Flange Covers

Made from flexible PVC, SR Flange Covers protect faces and edges of flanges, threads, flared or beaded tubes and ducts. Unique design allows for easy snap-on application without the use of tools, yet provides a snug, conforming fit. Excellent for protecting against contamination, nicks or abrasion of parts during shipping, handling and storage.



## ***Product Features***

- Snap ring design provides labor saving application removal
- Durable material won't crack, split or warp
- Covers are reusable

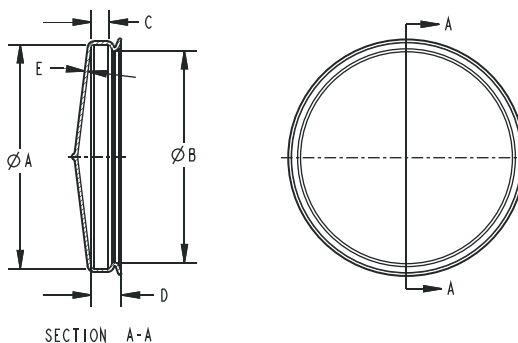
## ***Applications***

- Protection during storage
- Paint masks
- Dust and moisture barriers
- Shipping covers



SR Flange Covers

Item	Inside Diameter "A"		Inside Diameter "B"		Inside Length "C"		Inside Length "D"		Wall Thickness "E"		Ready to Ship
	In.	mm	In.	mm	In.	mm	In.	mm	In. ± .010	mm ± 0.25	
SR-0900	.900	22.86	.775	19.69	.375	9.53	.625	15.88	.060	1.53	
SR-1025	1.025	26.04	.900	22.86	.375	9.53	.625	15.88	.060	1.53	✓
SR-1150	1.150	29.21	1.025	26.04	.375	9.53	.625	15.88	.060	1.53	
SR-1525	1.525	38.74	1.405	35.69	.375	9.53	.625	15.88	.060	1.53	✓
SR-1650	1.650	41.91	1.525	38.74	.375	9.53	.625	15.88	.060	1.53	✓
SR-1900	1.900	48.26	1.650	41.91	.375	9.53	.625	15.88	.060	1.53	✓
SR-2025	2.025	51.44	1.825	46.36	.375	9.53	.625	15.88	.060	1.53	
SR-2150	2.150	54.61	1.900	48.26	.375	9.53	.625	15.88	.060	1.53	✓
SR-2400	2.400	60.96	2.150	54.61	.375	9.53	.625	15.88	.060	1.53	✓
SR-2650	2.650	67.31	2.400	60.96	.375	9.53	.625	15.88	.060	1.53	✓
SR-2900	2.900	73.66	2.650	67.31	.375	9.53	.625	15.88	.070	1.78	✓
SR-3125	3.125	79.38	2.900	73.66	.375	9.53	.625	15.88	.070	1.78	✓
SR-3400	3.400	86.36	3.150	80.01	.375	9.53	.625	15.88	.070	1.78	✓
SR-3650	3.650	92.71	3.400	86.36	.375	9.53	.625	15.88	.070	1.78	
SR-3900	3.900	99.06	3.650	92.71	.375	9.53	.625	15.88	.070	1.78	
SR-4150	4.150	105.41	3.900	99.06	.375	9.53	.625	15.88	.070	1.78	
SR-4400	4.400	111.76	4.150	105.41	.375	9.53	.625	15.88	.070	1.78	✓
SR-4650	4.650	118.11	4.400	111.76	.375	9.53	.625	15.88	.070	1.78	
SR-4900	4.900	124.46	4.650	118.11	.375	9.53	.625	15.88	.070	1.78	
SR-5150	5.150	130.81	4.900	124.46	.375	9.53	.625	15.88	.070	1.78	✓
SR-5400	5.400	137.16	5.150	130.81	.375	9.53	.625	15.88	.070	1.78	✓
SR-5625	5.625	142.88	5.400	137.16	.375	9.53	.625	15.88	.070	1.78	
SR-5900	5.900	149.86	5.625	142.88	.513	13.03	.781	19.84	.080	2.03	
SR-6150	6.150	156.21	5.900	149.86	.513	13.03	.781	19.84	.080	2.03	
SR-6900	6.900	175.26	6.650	168.91	.513	13.03	.781	19.84	.080	2.03	
SR-7125	7.125	180.98	6.900	175.26	.513	13.03	.781	19.84	.080	2.03	
SR-7400	7.400	187.96	7.125	180.98	.513	13.03	.781	19.84	.080	2.03	
SR-7650	7.650	194.31	7.400	187.96	.513	13.03	.781	19.84	.080	2.03	
SR-8150	8.150	207.01	7.900	200.66	.513	13.03	.781	19.84	.090	2.29	
SR-8400	8.400	213.36	8.150	207.01	.513	13.03	.781	19.84	.090	2.29	
SR-8650	8.650	219.71	8.400	213.36	.513	13.03	.781	19.84	.090	2.29	
SR-8900	8.900	226.06	8.650	219.71	.513	13.03	.890	22.61	.090	2.29	
SR-9400	9.400	238.76	9.150	232.41	.513	13.03	.890	22.61	.090	2.29	
SR-9650	9.650	245.11	9.400	238.76	.513	13.03	.890	22.61	.090	2.29	
SR-9900	9.900	251.46	9.650	245.11	.513	13.03	.890	22.61	.090	2.29	
SR-10150	10.150	257.81	9.900	251.46	.513	13.03	.890	22.61	.090	2.29	
SR-10400	10.400	264.16	10.150	257.81	.513	13.03	.890	22.61	.100	2.54	
SR-10900	10.900	276.86	10.650	270.51	.513	13.03	.890	22.61	.100	2.54	
SR-11900	11.900	302.26	11.650	295.91	.513	13.03	1.000	25.40	.100	2.54	
SR-12150	12.150	308.61	11.900	302.26	.513	13.03	1.000	25.40	.100	2.54	



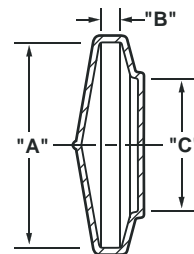
## ASA Flange Covers

Unique design protects critical flange faces, preventing interior damage and contamination. Covers fit most American Standard Association, Navy and Military sizes. Our flexible vinyl flange covers won't warp, swell, tear or split.



### Product Features

- Resists weather, moisture and chemicals
- Cushions against abrasive contacts



### Applications

- Flanges and joints
- Valves
- Vessels
- Pipes

### ASA Flange Covers

Item	Inside Diameter "A"		Inside Length "B"		Inside Diameter "C"		Ready to Ship
	In.	mm	In.	mm	In.	mm	
350-6	3.480	88.39	.400	10.16	2.485	63.12	
375-8	3.750	95.25	.500	12.70	2.750	69.85	
387-8	3.870	98.30	.540	13.72	2.860	72.64	
425-7	4.250	107.95	.460	11.68	3.260	82.80	
462-9	4.660	118.36	.500	12.70	3.620	91.95	
487-10	4.870	123.70	.680	17.27	3.900	99.06	✓
500-9	5.000	127.00	.620	15.75	4.000	101.60	✓
525-12	5.250	133.35	.760	19.30	4.250	107.95	✓
600-10	6.000	152.40	.675	17.15	4.500	114.30	✓
612-13	6.120	155.45	.825	20.96	5.110	129.79	✓
650-14	6.500	165.10	.900	22.86	5.500	139.70	✓
700-12	7.000	177.80	.800	20.32	6.000	152.40	✓
750-14	7.500	190.50	.900	22.86	6.500	165.10	✓
825-19	8.250	209.55	1.300	33.02	7.200	182.88	✓
900-15	9.000	228.60	1.000	25.40	8.030	203.96	✓
1000-14	10.030	254.76	.875	22.23	9.000	228.60	✓
1000-20	10.030	254.76	.925	23.50	9.000	228.60	
1075-24	10.750	273.05	1.500	38.10	9.730	247.14	✓
1100-16	11.000	279.40	1.000	25.40	10.050	255.27	✓
1250-22	12.500	317.50	1.440	36.58	11.500	292.10	✓
1350-17	13.500	342.90	1.000	25.40	12.500	317.50	

### Steel Flanges ASA B16.5 1957

Nominal Pipe Size	150 Lb. Flange Cover Number	300 Lb. Flange Cover Number	400 Lb. Flange Cover Number	600 Lb. Flange Cover Number
1/2"	350-6	375-8	375-8	375-8
3/4"	387-8	462-9	462-9	462-9
1"	425-7	487-10	487-10	487-10
1 1/4"	462-9	525-12	525-12	525-12
1 1/2"	500-9	612-13	612-13	612-13
2"	600-10	650-14	650-14	650-14
2 1/2"	700-12	750-14		
3"	750-14	825-19	825-19	825-19
4"	900-15	1000-20	1000-20	1000-20
5"	1000-14			
6"	1100-16	1250-22		
8"	1350-17			

## About Masking

At Stockcap, our goal is to determine the best masking product for your application. In most cases, there will be many choices depending on the circumstances involved in your process.

### 1. What is the cure temperature of the process and for how long?

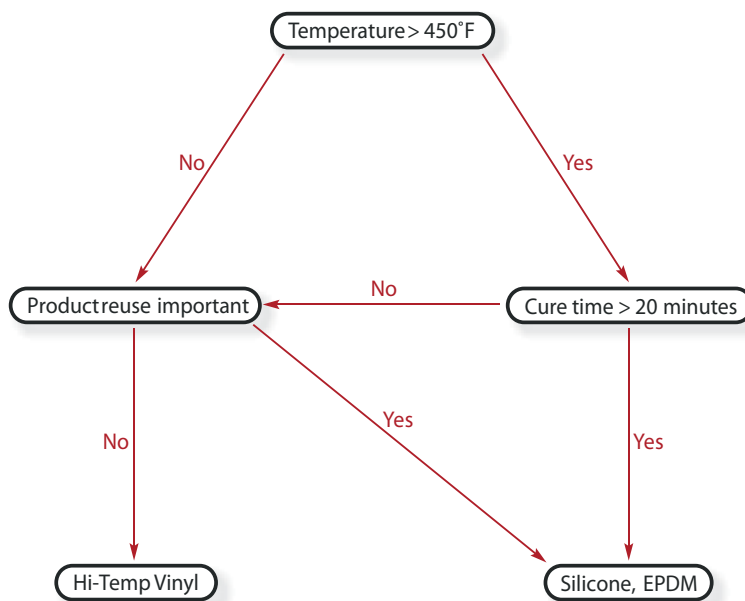
Time and temperature are the primary factors in determining what material to select. We typically recommend testing the lower cost alternatives before moving on to higher grade products. In molded parts, the vinyl materials are significantly cheaper than their rubber counterparts.

### 2. Is reusability important?

The higher costs of silicone or EPDM parts may be offset by the fact that they can be used multiple times in many processes. In contrast, vinyl parts are typically only used one time.

### 3. Are mold release issues a concern?

Silicone rubber is not the same as the lubricant silicone. Silicone caps and plugs have proven to be successful masks in virtually every coating process. Vinyl caps do typically utilize mold releases that may affect a powder coating or e-coating process. For this reason, we often put vinyl caps through an industrial washing process.





# Materials and Their Applications

## Caps / Plugs / Custom Molded Masks

Process / Material	Standard Vinyl Pages 4 - 36	Hi-Temp Vinyl Pages 4 - 36	EPDM Pages 38 - 45	Silicone Pages 38 - 45, 49
Maximum Temperature	225°F (107°C)	446°F (230°C)	475°F (246°C)	600°F (316°C)
Painting – Air Dry	Lowest cost alternative.	Functions well. Higher cost alternative.	Functions well. Costly alternative.	Functions well. Costly alternative.
Painting with Bake up to 350°F	Will withstand some low-cure processes.	Works in most processes at significantly less cost than Silicone or EPDM.	Typically only used if Hi-Temp vinyl does not perform.	Functions well. Costly alternative.
Powder Coating	Less effective than Hi-Temp vinyl.	Works in some processes especially when using large masks. One time use. Wash caps to remove any mold release.	Works in most processes. Fewer passes than Silicone products.	Works in nearly every process. Get multiple passes as powder is easily cracked off.
E-Coating	Typically will not withstand bake temperatures.	Low cost alternative. Specify industrial wash to eliminate mold release.	Works in most processes. Fewer passes than Silicone products.	Works in nearly every process. Get multiple passes as powder is easily cracked off.
Plating	Lowest cost alternative, but some chemicals may break them down.	N/A	Great chemical resistance makes these a safe choice for most plating processes.	Costly alternative.

**NOTE:** Stockcap can also mold products in Nitrile, Natural and Neoprene rubber.

## Tapes / Discs / Cutom Die Cuts - Pages 46 - 48

Process	Material		
Temperature Painting with Bake up to 325°F	Hi-Temp Crepe 325°F (163°C) for 20 minutes.		
Powder Coating	2 mil. Green Polyester resists up to 400°F (204°C) for 20 minutes. Industry Standard.	1 mil. Polymimide Kapton™ resists up to 500°F (260°C) for 20 minutes.	Non-Adhesive, Self-Fusing Silicone Tape resists up to 500°F (260°C).
E-Coating	2 mil. Green Polyester resists up to 400°F (204°C) for 20 minutes. Industry Standard.		
Plating	Vinyl Platers Tape.		

## EPDM Caps

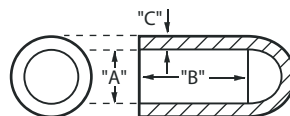
Providing superior chemical resistance, EPDM Caps are the ideal choice for caps that will be exposed to a harsh environment.

### Product Features

- Withstands temperatures to 475°F (246°C)
- Custom sizes available

### Applications

- Ideal for plating applications
- Masking and industrial applications requiring high chemical and heat resistance



### EPDM Caps

Part Number	Inside Diameter "A"		Inside Length "B"		Wall Thickness "C"		Ready to Ship
	In.	mm	In.	mm	In.	mm	
395294	0.062	1.57	0.750	19.05	0.060	1.52	
878371	0.070	1.78	1.000	25.40	0.060	1.52	
488677	0.093	2.36	0.750	19.05	0.060	1.52	
381905	0.100	2.54	0.500	12.70	0.060	1.52	✓
019752	0.109	2.77	0.750	19.05	0.060	1.52	✓
743668	0.125	3.18	0.500	12.70	0.060	1.52	
036893	0.125	3.18	1.000	25.40	0.060	1.52	✓
310745	0.140	3.56	1.000	25.40	0.043	1.09	✓
960788	0.140	3.56	0.500	12.70	0.060	1.52	✓
150729	0.148	3.76	1.000	25.40	0.060	1.02	
426128	0.156	3.96	1.000	25.40	0.060	1.52	✓
001564	0.156	3.96	0.500	12.70	0.060	1.52	✓
159708	0.172	4.37	0.500	12.70	0.060	1.52	✓
342132	0.172	4.37	1.000	25.40	0.060	1.52	✓
855838	0.187	4.75	0.500	12.70	0.060	1.52	✓
386187	0.187	4.75	1.000	25.40	0.060	1.52	✓
133005	0.218	5.54	1.000	25.40	0.060	1.52	
064178	0.223	5.66	1.000	25.40	0.060	1.52	✓
393866	0.234	5.94	1.000	25.40	0.060	1.52	✓
633127	0.234	5.94	1.500	38.10	0.060	1.52	
686163	0.250	6.35	1.000	25.40	0.060	1.52	✓
097400	0.281	7.14	1.000	25.40	0.060	1.52	✓
648560	0.295	7.49	1.000	25.40	0.057	1.45	
295105	0.295	7.49	1.500	38.10	0.057	1.45	
995137	0.313	7.95	1.000	25.40	0.060	1.52	✓
349180	0.340	8.64	1.000	25.40	0.060	1.52	
965590	0.355	9.02	1.500	38.10	0.060	1.52	✓

### EPDM Caps Continued

Part Number	Inside Diameter "A"		Inside Length "B"		Wall Thickness "C"		Ready to Ship
	In.	mm	In.	mm	In.	mm	
053949	0.375	9.53	1.000	25.40	0.060	1.52	✓
025310	0.375	9.53	1.500	38.10	0.060	1.27	✓
372904	0.406	10.31	1.000	25.40	0.060	1.52	✓
112359	0.437	11.10	1.000	25.40	0.060	1.52	✓
315110	0.456	11.58	1.500	38.10	0.060	1.52	✓
590420	0.468	11.89	1.000	25.40	0.060	1.52	✓
480150	0.480	12.19	1.500	38.10	0.060	1.52	
318896	0.500	12.70	1.500	38.10	0.060	1.52	✓
318897	0.535	13.59	1.500	38.10	0.060	1.52	✓
757703	0.562	14.27	1.500	38.10	0.060	1.52	✓
757704	0.600	15.24	1.500	38.10	0.060	1.52	
218089	0.625	15.88	1.500	38.10	0.060	1.52	
191065	0.687	17.45	1.500	38.10	0.060	1.52	✓
009033	0.750	19.05	1.500	38.10	0.060	1.52	✓
057831	0.812	20.62	1.500	38.10	0.060	1.52	✓
090370	0.875	22.23	1.500	38.10	0.060	1.52	✓
341501	0.937	23.80	1.500	38.10	0.060	1.52	✓
292837	1.000	25.40	1.500	38.10	0.060	1.52	✓
270542	1.062	26.97	1.500	38.10	0.060	1.52	✓
292840	1.125	28.58	1.500	38.10	0.060	1.52	✓
161976	1.187	30.15	1.500	38.10	0.060	1.52	✓
422425	1.250	31.75	1.500	38.10	0.060	1.52	✓
995754	1.500	38.10	1.500	38.10	0.060	1.52	
760051	1.750	44.45	2.000	50.80	0.060	1.52	✓
322048	1.875	47.63	2.000	50.80	0.060	1.52	✓
292845	2.000	50.80	2.000	50.80	0.060	1.52	





# Silicone Caps

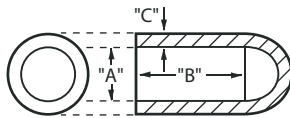
Silicone caps will withstand multiple passes through most coating processes and are reusable, which increases their value over one-time use only materials.

### Product Features

- Resists temperatures up to 600°F (316°C)
- No risk of contamination to paint line
- Custom sizes and colors available
- Red is stocked

### Applications

- Specifically designed for powder coating and E-coating applications



## Silicone Caps

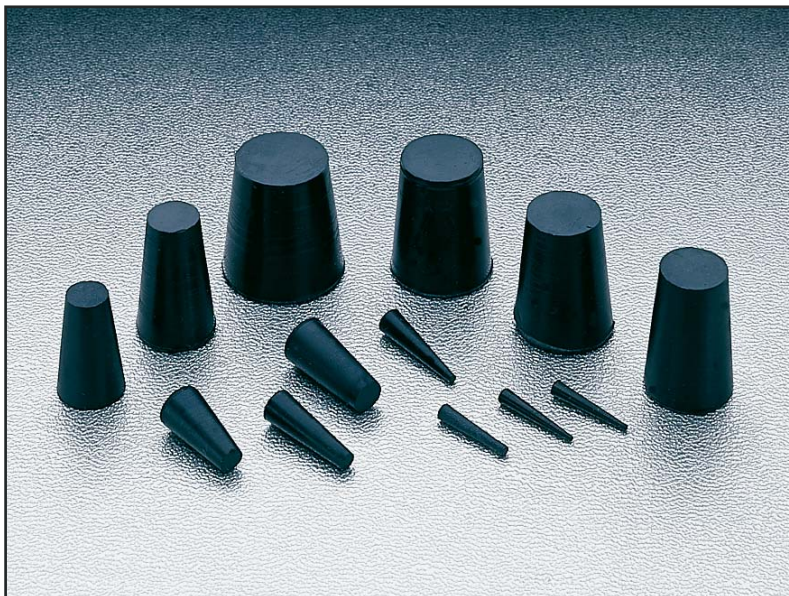
Part Number	Inside Diameter "A"		Inside Length "B"		Wall Thickness "C"		Ready to Ship
	In.	mm	In.	mm	In.	mm	
494718	0.062	1.57	0.750	19.05	0.060	1.52	
477088	0.070	1.78	1.000	25.40	0.060	1.52	
394105	0.093	2.36	0.750	19.05	0.060	1.52	
485190	0.100	2.54	0.500	12.70	0.060	1.52	✓
668515	0.109	2.77	0.750	19.05	0.060	1.52	✓
423708	0.125	3.18	0.500	12.70	0.060	1.52	✓
646346	0.125	3.18	1.000	25.40	0.060	1.52	✓
536508	0.140	3.56	1.000	25.40	0.043	1.09	✓
478875	0.140	3.56	0.500	12.70	0.060	1.52	✓
128851	0.148	3.76	1.000	25.40	0.060	1.52	
613332	0.156	3.96	1.000	25.40	0.060	1.52	
053646	0.156	3.96	0.500	12.70	0.060	1.52	✓
671966	0.172	4.37	0.500	12.70	0.060	1.52	
405160	0.172	4.37	1.000	25.40	0.060	1.52	✓
701893	0.187	4.75	0.500	12.70	0.060	1.52	
656937	0.187	4.75	1.000	25.40	0.060	1.52	✓
447744	0.218	5.54	1.000	25.40	0.060	1.52	✓
799746	0.223	5.66	1.000	25.40	0.060	1.52	✓
151786	0.234	5.94	1.000	25.40	0.060	1.52	✓
991235	0.234	5.94	1.500	38.10	0.060	1.52	
836188	0.250	6.35	1.000	25.40	0.060	1.52	✓
661069	0.281	7.14	1.000	25.40	0.060	1.52	✓
956331	0.295	7.49	1.000	25.40	0.057	1.45	✓
359693	0.295	7.49	1.500	38.10	0.057	1.45	
968368	0.313	7.95	1.000	25.40	0.060	1.52	
374736	0.340	8.64	1.000	25.40	0.060	1.52	✓
628632	0.355	9.02	1.500	38.10	0.060	1.52	✓

## Silicone Caps Continued

Part Number	Inside Diameter "A"		Inside Length "B"		Wall Thickness "C"		Ready to Ship
	In.	mm	In.	mm	In.	mm	
510770	0.375	9.53	1.000	25.40	0.060	1.52	
165692	0.375	9.53	1.500	38.10	0.060	1.27	
538165	0.406	10.31	1.000	25.40	0.060	1.52	✓
668528	0.437	11.10	1.000	25.40	0.060	1.52	✓
425710	0.456	11.58	1.500	38.10	0.060	1.52	✓
262997	0.468	11.89	1.000	25.40	0.060	1.52	✓
866589	0.480	12.19	1.500	38.10	0.060	1.52	✓
256666	0.500	12.70	1.500	38.10	0.060	1.52	✓
772393	0.535	13.59	1.500	38.10	0.060	1.52	✓
024965	0.562	14.27	1.500	38.10	0.060	1.52	✓
054611	0.600	15.24	1.500	38.10	0.060	1.52	✓
073243	0.625	15.88	1.500	38.10	0.060	1.52	✓
290194	0.687	17.45	1.500	38.10	0.060	1.52	✓
862182	0.750	19.05	1.500	38.10	0.060	1.52	✓
314449	0.812	20.62	1.500	38.10	0.060	1.52	
530973	0.875	22.23	1.500	38.10	0.060	1.52	✓
657623	0.937	23.80	1.500	38.10	0.060	1.52	✓
821403	1.000	25.40	1.500	38.10	0.060	1.52	✓
368503	1.062	26.97	1.500	38.10	0.060	1.52	✓
909192	1.125	28.58	1.500	38.10	0.060	1.52	✓
562238	1.187	30.15	1.500	38.10	0.060	1.52	✓
208520	1.250	31.75	1.500	38.10	0.060	1.52	
499797	1.500	38.10	1.500	38.10	0.060	1.52	✓
700132	1.750	44.45	2.000	50.80	0.060	1.52	✓
314765	1.875	47.63	2.000	50.80	0.060	1.52	✓
131998	2.000	50.80	2.000	50.80	0.060	1.52	✓

## EPDM Tapered Plugs

The tapered design of these plugs allows one size to fit multiple ports. Soft rubber materials conform to provide a tight seal. In some powder coating processes, EPDM Tapered Plugs have been used as a low cost alternative to silicone plugs.



### Product Features

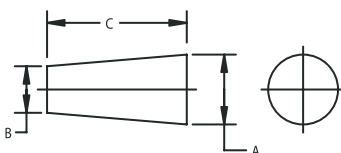
- Superior chemical resistance
- Withstands temperatures up to 475°F (246°C)
- Will not contaminate a paint line
- Custom sizes and colors available
- Black is stocked

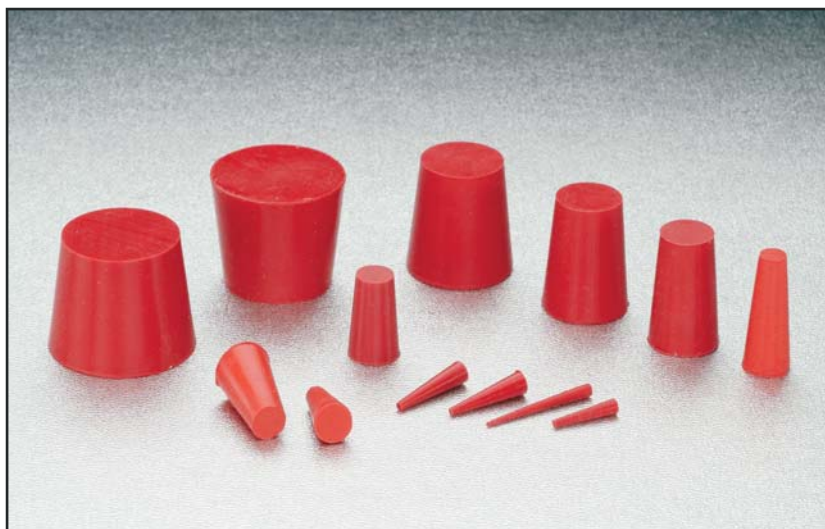
### Applications

- Ideal for plating and anodizing applications

### EPDM Tapered Plugs

Part Number	"A" Top O.D.		"B" Bottom O.D.		"C" Length Plug		Ready to Ship
	In.	mm	In.	mm	In.	mm	
974970	0.100	2.54	0.031	0.79	1.000	25.40	
595788	0.125	3.18	0.031	0.79	0.625	15.88	✓
912074	0.125	3.18	0.062	1.57	0.625	15.88	✓
146069	0.187	4.75	0.062	1.57	0.750	19.05	
683986	0.200	5.08	0.062	1.57	0.750	19.05	✓
105673	0.250	6.35	0.125	3.18	0.750	19.05	✓
631765	0.250	6.35	0.125	3.18	1.000	25.40	
952038	0.344	8.74	0.187	4.75	0.625	15.88	✓
322960	0.344	8.74	0.187	4.75	1.000	25.40	
103389	0.375	9.53	0.250	6.35	0.750	19.05	✓
316230	0.375	9.53	0.125	3.18	1.250	31.75	
316229	0.437	11.10	0.250	6.35	1.000	25.40	
033962	0.472	11.99	0.354	8.99	0.748	19.00	✓
079319	0.500	12.70	0.125	3.18	2.000	50.80	✓
843878	0.500	12.70	0.313	7.95	0.813	20.65	✓
418656	0.594	15.09	0.406	10.31	1.000	25.40	✓
594413	0.656	16.66	0.500	12.70	1.000	25.40	✓
430494	0.750	19.05	0.563	14.30	1.000	25.40	✓
316233	0.812	20.62	0.625	15.88	1.000	25.40	✓
800065	0.938	23.83	0.718	18.24	1.000	25.40	✓
361234	1.024	26.01	0.787	19.99	1.000	25.40	✓
361235	1.063	27.00	0.905	22.99	1.000	25.40	
361236	1.260	32.00	1.024	26.01	1.000	25.40	✓
361237	1.338	33.99	1.063	27.00	1.000	25.40	



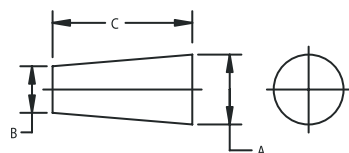


# Silicone Tapered Plugs

The tapered design of these plugs allows one size to fit multiple ports. Soft rubber materials conform to provide a tight seal. Silicone Tapered Plugs will withstand multiple passes through most coating processes.

## Silicone Tapered Plugs

Part Number	"A" Top O.D.		"B" Bottom O.D.		"C" Length Plug		Ready to Ship
	In.	mm	In.	mm	In.	mm	
729043	0.100	2.54	0.031	0.79	1.000	25.40	
001215	0.125	3.18	0.031	0.79	0.625	15.88	✓
098481	0.125	3.18	0.062	1.57	0.625	15.88	✓
573688	0.187	4.75	0.062	1.57	0.750	19.05	✓
190676	0.200	5.08	0.062	1.57	0.750	19.05	
632740	0.250	6.35	0.125	3.18	0.750	19.05	
505198	0.250	6.35	0.125	3.18	1.000	25.40	
826154	0.344	8.74	0.187	4.75	0.625	15.88	
600486	0.344	8.74	0.187	4.75	1.000	25.40	
390292	0.375	9.53	0.250	6.35	0.750	19.05	
649566	0.375	9.53	0.125	3.18	1.250	31.75	✓
337820	0.437	11.10	0.250	6.35	1.000	25.40	✓
443051	0.472	11.99	0.354	8.99	0.748	19.00	✓
046817	0.500	12.70	0.125	3.18	2.000	50.80	✓
734506	0.500	12.70	0.313	7.95	0.812	20.62	✓
602762	0.594	15.09	0.406	10.31	1.000	25.40	✓
853325	0.656	16.66	0.500	12.70	1.000	25.40	✓
440972	0.750	19.05	0.563	14.30	1.000	25.40	
255081	0.812	20.62	0.625	15.88	1.000	25.40	✓
498005	0.938	23.83	0.718	18.24	1.000	25.40	✓
833210	1.024	26.01	0.787	19.99	1.000	25.40	✓
259356	1.063	27.00	0.905	22.99	1.000	25.40	
903694	1.260	32.00	1.024	26.01	1.000	25.40	✓
578430	1.338	33.99	1.063	27.00	1.000	25.40	



### Product Features

- Withstands temperatures up to 600°F (316°C)
- Will not contaminate a paint line
- Custom sizes and colors available
- Red is stocked

### Applications

- Specifically designed for powder coating and E-coating applications



## EPDM Pull Plugs

Designed to provide tight seals on both ends of threaded and non-threaded through holes. Choose a diameter slightly larger than the hole to mask. The plug will stretch when pulled through the hole by its tab and then relax to provide an air tight seal.



### Product Features

- Superior chemical resistance
- Withstands temperatures up to 475°F (246°C)
- Custom sizes and colors available
- Black is stocked

### Applications

- Ideal for plating and anodizing applications

### EPDM Pull Plugs

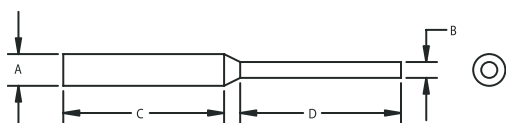
Part Number	"A" O.D. Plug		"B" O.D. Tab		"C" Length Plug		"D" Length Tab		Ready to Ship
	In.	mm	In.	mm	In.	mm	In.	mm	
659080	0.067	1.702	0.047	1.194	0.625	15.875	0.625	15.875	✓
409314	0.093	2.362	0.062	1.575	0.625	15.875	0.625	15.875	
840719	0.109	2.769	0.062	1.575	0.625	15.875	0.625	15.875	
022916	0.118	2.997	0.082	2.083	1.000	25.400	1.000	25.400	✓
566961	0.125	3.175	0.082	2.083	0.625	15.875	0.625	15.875	
649516	0.130	3.302	0.082	2.083	0.625	15.875	0.625	15.875	
840720	0.140	3.556	0.082	2.083	0.625	15.875	0.625	15.875	✓
074309	0.156	3.962	0.082	2.083	0.625	15.875	0.625	15.875	✓
606654	0.158	4.013	0.093	2.362	1.000	25.400	1.000	25.400	✓
865593	0.162	4.115	0.093	2.362	0.625	15.875	0.625	15.875	
210218	0.187	4.750	0.110	2.794	0.625	15.875	0.625	15.875	
659449	0.197	5.004	0.110	2.794	1.000	25.400	1.000	25.400	
063940	0.218	5.537	0.110	2.794	1.000	25.400	1.000	25.400	
020314	0.225	5.715	0.125	3.175	1.000	25.400	1.000	25.400	
705663	0.257	6.528	0.130	3.302	1.000	25.400	1.000	25.400	✓
866513	0.275	6.985	0.130	3.302	0.950	24.130	0.950	24.130	
847265	0.281	7.137	0.138	3.505	1.000	25.400	1.000	25.400	✓
725300	0.335	8.509	0.157	3.988	1.000	25.400	1.000	25.400	✓
843774	0.350	8.890	0.157	3.988	0.900	22.860	0.900	22.860	✓
493482	0.388	9.855	0.157	3.988	1.000	25.400	1.000	25.400	✓
315066	0.400	10.160	0.157	3.988	1.000	25.400	1.000	25.400	✓
914604	0.468	11.887	0.250	6.350	1.000	25.400	1.000	25.400	
858195	0.510	12.954	0.250	6.350	1.000	25.400	1.000	25.400	✓
744765	0.530	13.462	0.250	6.350	1.000	25.400	1.000	25.400	
644663	0.612	15.545	0.250	6.350	1.000	25.400	1.000	25.400	✓
703829	0.640	16.256	0.375	9.525	1.000	25.400	1.000	25.400	
015679	0.700	17.780	0.375	9.525	1.000	25.400	1.000	25.400	✓
686017	0.729	18.517	0.315	8.001	1.000	25.400	1.000	25.400	
441029	0.809	20.549	0.315	8.001	1.000	25.400	1.000	25.400	
713613	0.896	22.758	0.375	9.525	1.000	25.400	1.000	25.400	✓
772179	1.020	25.908	0.375	9.525	1.000	25.400	1.000	25.400	✓





# Silicone Pull Plugs

Designed to provide tight seals on both ends of threaded and non-threaded through holes. Choose a diameter slightly larger than the hole to mask. The plug will stretch when pulled through the hole by its tab and then relax to provide an air tight seal.



## Silicone Pull Plugs

Part Number	"A" O.D. Plug		"B" O.D. Tab		"C" Length Plug		"D" Length Tab		Ready to Ship
	In.	mm	In.	mm	In.	mm	In.	mm	
218100	0.067	1.702	0.047	1.194	0.625	15.875	0.625	15.875	✓
218103	0.093	2.362	0.062	1.575	0.625	15.875	0.625	15.875	
218104	0.109	2.769	0.062	1.575	0.625	15.875	0.625	15.875	✓
564030	0.118	2.997	0.082	2.083	1.000	25.400	1.000	25.400	✓
218105	0.125	3.175	0.082	2.083	0.625	15.875	0.625	15.875	
218106	0.130	3.302	0.082	2.083	0.625	15.875	0.625	15.875	✓
218107	0.140	3.556	0.082	2.083	0.625	15.875	0.625	15.875	✓
218108	0.156	3.962	0.082	2.083	0.625	15.875	0.625	15.875	✓
673612	0.158	4.013	0.093	2.362	1.000	25.400	1.000	25.400	✓
218109	0.162	4.115	0.093	2.362	0.625	15.875	0.625	15.875	
218210	0.187	4.750	0.110	2.794	0.625	15.875	0.625	15.875	
415899	0.197	5.004	0.110	2.794	1.000	25.400	1.000	25.400	✓
218110	0.218	5.537	0.110	2.794	1.000	25.400	1.000	25.400	✓
218111	0.225	5.715	0.125	3.175	1.000	25.400	1.000	25.400	
218211	0.257	6.528	0.130	3.302	1.000	25.400	1.000	25.400	✓
154946	0.275	6.985	0.130	3.302	0.950	24.130	0.950	24.130	
340564	0.281	7.137	0.138	3.505	1.000	25.400	1.000	25.400	✓
218116	0.335	8.509	0.157	3.988	1.000	25.400	1.000	25.400	✓
138778	0.350	8.890	0.157	3.988	0.900	22.860	0.900	22.860	✓
218118	0.388	9.855	0.157	3.988	1.000	25.400	1.000	25.400	✓
218119	0.400	10.160	0.157	3.988	1.000	25.400	1.000	25.400	✓
218123	0.468	11.887	0.250	6.350	1.000	25.400	1.000	25.400	
218125	0.510	12.954	0.250	6.350	1.000	25.400	1.000	25.400	✓
218126	0.530	13.462	0.250	6.350	1.000	25.400	1.000	25.400	
218127	0.612	15.545	0.250	6.350	1.000	25.400	1.000	25.400	
218128	0.640	16.256	0.375	9.525	1.000	25.400	1.000	25.400	
218129	0.700	17.780	0.375	9.525	1.000	25.400	1.000	25.400	
400237	0.729	18.517	0.315	8.001	1.000	25.400	1.000	25.400	
356703	0.809	20.549	0.315	8.001	1.000	25.400	1.000	25.400	
228224	0.896	22.758	0.375	9.525	1.000	25.400	1.000	25.400	✓
995671	1.020	25.908	0.375	9.525	1.000	25.400	1.000	25.400	✓

### Product Features

- Withstands temperatures up to 600°F (316°C)
- Will not contaminate a paint line
- Custom sizes and colors available
- Stocked in clear silicone

### Applications

- Specifically designed for powder coating and E-coating applications



## Silicone Washer Plugs

Silicone Washer Plugs are designed for those applications which require a hole to be plugged, and the surrounding surface area to be masked. Typical applications include the masking of the grounding area around a threaded port. The opposite side of the plug, the tab, aids for easy removal. This, combined with its reusability feature, makes the Silicone Washer Plugs an attractive alternative to discs.



### Product Features

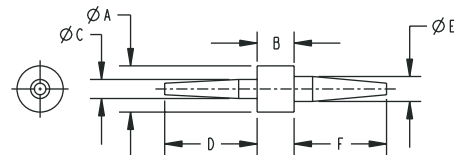
- Withstands temperatures up to 600°F (316°C)
- Will not contaminate a paint line
- Custom sizes and colors available
- Withstands multiple passes through most coating processes

### Applications

- Specifically designed for powder coating and E-coating applications

Silicone Washer Plugs

Part Number	Washer		Top Plug		Bottom Plug		Ready to Ship
	"A" O.D.	"B" Length	"C" O.D. Top	"D" Length	"E" O.D. Bottom	"F" Length	
278878	0.250	0.200	0.103	0.500	0.130	0.500	✓
230423	0.250	0.200	0.103	0.500	0.180	0.500	✓
117628	0.250	0.200	0.103	0.500	0.209	0.500	✓
425599	0.312	0.200	0.103	0.500	0.155	0.500	✓
675077	0.312	0.200	0.103	0.500	0.209	0.500	✓
736584	0.312	0.200	0.103	0.500	0.275	0.500	✓
301660	0.375	0.200	0.130	0.500	0.155	0.500	✓
512514	0.375	0.200	0.130	0.500	0.180	0.500	✓
753616	0.375	0.200	0.130	0.500	0.209	0.500	✓
019263	0.375	0.200	0.130	0.500	0.250	0.500	✓
882561	0.500	0.200	0.130	0.500	0.140	0.500	✓
619261	0.500	0.200	0.130	0.500	0.155	0.500	✓
307871	0.500	0.200	0.130	0.500	0.180	0.500	✓
997360	0.500	0.200	0.130	0.500	0.200	0.500	✓
231535	0.500	0.200	0.130	0.500	0.275	0.500	✓
130258	0.500	0.200	0.130	0.500	0.390	0.500	✓
140665	0.500	0.200	0.130	0.500	0.455	0.500	✓
844390	0.500	0.200	0.180	0.500	0.238	0.500	✓
219896	0.500	0.220	0.275	0.500	0.375	0.500	✓
985175	0.716	0.200	0.218	0.500	0.218	0.500	✓
389703	0.787	0.200	0.375	0.500	0.512	0.500	✓
205449	0.787	0.200	0.551	0.500	0.689	0.500	✓
167437	0.866	0.200	0.375	0.500	0.455	0.500	✓





# Silicone Flange Plugs

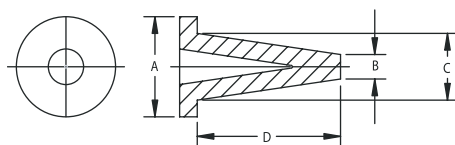
Silicone Flange Plugs are recommended for applications requiring a grounding area mask. The tapered, hollow design allows for easy insertion into threaded or non-threaded holes.

### Product Features

- Resists temperatures up to 600°F (316°C)
- Withstands multiple passes through most coating processes
- Will not contaminate a paint line
- Custom sizes and colors available

### Silicone Flange Plugs

Part Number	"A" Washer O.D.		"B" Bottom O.D.		"C" Top O.D.		"D" Plug Length		Ready to Ship
	In.	mm	In.	mm	In.	mm	In.	mm	
033535	0.493	12.522	0.099	2.515	0.248	6.299	0.890	22.606	
902820	0.489	12.421	0.126	3.200	0.315	8.001	1.020	25.908	✓
552620	0.631	16.027	0.138	3.505	0.335	8.509	0.985	25.019	✓
731321	0.650	16.510	0.178	4.521	0.394	10.008	1.100	27.940	✓
108386	0.631	16.027	0.153	3.886	0.409	10.389	1.100	27.940	✓
272113	0.749	19.025	0.275	6.985	0.550	13.970	1.420	36.068	✓
524540	0.986	25.044	0.394	10.008	0.688	17.475	1.500	38.100	✓
429718	1.000	25.400	0.394	10.008	0.818	20.777	1.930	49.022	✓
453218	1.103	28.016	0.394	10.008	0.768	19.507	2.000	50.800	✓
554048	1.219	30.963	0.394	10.008	0.868	22.047	2.000	50.800	✓



### Applications

- Specifically designed for powder coating and E-coating applications



## Discs

### (A) 2 Mil Green Polyester Discs

The industry standard for most powder coating and E-coating applications. These discs have a 1.5 mil silicone adhesive and will withstand temperatures up to 400°F (204°C).

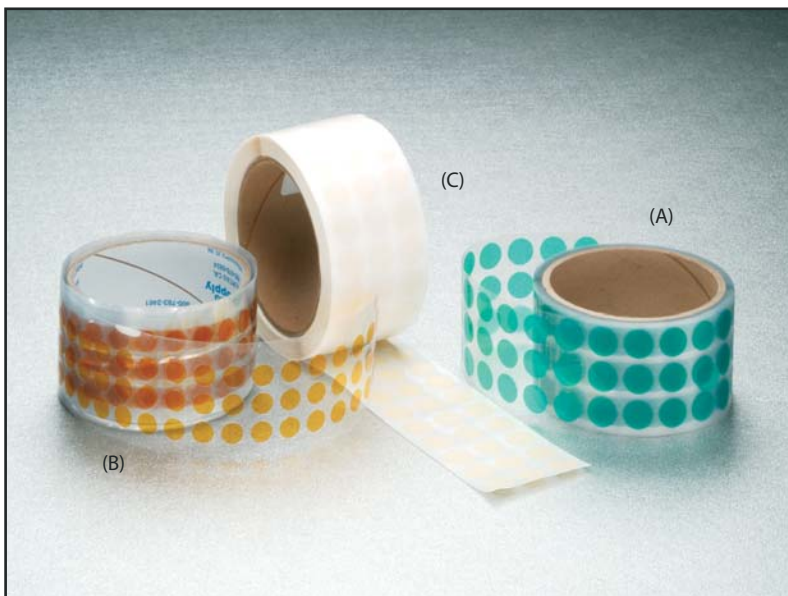
### (B) 1 Mil Polyimide Kapton™ Discs

Recommended for applications requiring extremely high heat resistance, including high temperature powder coating and the masking of printed circuit boards. These discs have a 1.5 mil silicone adhesive and can withstand temperatures up to 500°F (260°C).

### (C) Hi-Temp Crepe Discs

Recommended for most painting processes, Hi-Temp Crepe Discs will withstand temperatures up to 325°F (163°C). Provides good line definition and removes easily.

Ask about our specialty discs which include Woven Glass Cloth, Lead Foil, Aluminum Foil, Electroplaters Vinyl Discs, and other Polyester styles.



(A) Polyester Discs

Part Number	Diameter		Pieces Per Roll	Ready to Ship
	In.	mm		
255374	0.125	3.18	2,000	
478999	0.156	3.96	2,000	
361921	0.187	4.75	2,000	✓
648053	0.218	5.54	2,000	✓
646381	0.250	6.35	2,000	✓
359504	0.281	7.14	2,000	✓
534418	0.312	7.92	2,000	
225242	0.375	9.53	2,000	✓
556790	0.437	11.10	2,000	✓
428234	0.500	12.70	2,000	
948998	0.562	14.27	2,000	
332045	0.625	15.88	2,000	✓
949828	0.687	17.45	1,000	
512873	0.750	19.05	1,000	✓
761920	0.812	20.62	1,000	✓
512875	0.875	22.23	1,000	✓
128753	0.937	23.80	1,000	✓
490504	1.000	25.40	1,000	✓
887392	1.062	26.97	500	
583263	1.125	28.58	500	
029717	1.187	30.15	500	
791197	1.250	31.75	500	✓
950101	1.312	33.32	500	
667311	1.375	34.93	500	✓
969564	1.437	36.50	500	
852960	1.500	38.10	500	✓
076319	1.625	41.28	500	
795162	1.750	44.45	500	
043817	1.812	46.02	500	
099025	1.875	47.63	500	
818088	2.000	50.80	500	
511301	3.000	76.20	250	
294383	4.000	101.60	250	
566528	5.000	127.00	100	

(B) Kapton™ Discs

Part Number	Diameter		Pieces Per Roll	Ready to Ship
	In.	mm		
144906	0.125	3.18	2,000	
316656	0.156	3.96	2,000	
616122	0.187	4.75	2,000	✓
525567	0.218	5.54	2,000	
631801	0.250	6.35	2,000	✓
421855	0.281	7.14	2,000	
104553	0.312	7.92	2,000	
016073	0.375	9.53	2,000	✓
345875	0.400	10.16	2,000	
649369	0.437	11.10	2,000	
866041	0.500	12.70	2,000	
489266	0.562	14.27	2,000	
134310	0.625	15.88	2,000	
183120	0.687	17.45	1,000	
664557	0.750	19.05	1,000	✓
553661	0.812	20.62	1,000	
989918	0.875	22.23	1,000	
440741	0.937	23.80	1,000	
675462	1.000	25.40	1,000	✓
583490	1.062	26.97	500	
257754	1.125	28.58	500	
676199	1.187	30.15	500	
090576	1.250	31.75	500	
559613	1.312	33.32	500	
644098	1.375	34.93	500	✓
968268	1.437	36.50	500	
854043	1.500	38.10	500	
484147	1.625	41.28	500	
544373	1.750	44.45	500	
395225	1.812	46.02	500	
768832	1.875	47.63	500	
559785	2.000	50.80	500	
208290	3.000	76.20	250	
248475	4.000	101.60	250	
280956	5.000	127.00	100	
967013	6.000	152.40	100	



# Protective Film and Custom Die Cuts

## (C) Crepe Discs

Part Number	Diameter		Pieces Per Roll	Ready to Ship
	In.	mm		
888115	0.125	3.18	5000	✓
431930	0.156	3.96	5000	
925671	0.187	4.75	5000	
197825	0.218	5.54	5000	
431076	0.250	6.35	5000	✓
924461	0.281	7.14	5000	
407541	0.312	7.92	5000	
962478	0.375	9.53	5000	✓
797896	0.437	11.10	5000	✓
268045	0.500	12.70	5000	
536071	0.562	14.27	5000	
361760	0.625	15.88	5000	✓
952929	0.687	17.45	4000	
531062	0.750	19.05	4000	✓
381394	0.812	20.62	4000	
691727	0.875	22.23	4000	
873794	0.937	23.80	4000	✓
974677	1.000	25.40	2000	
169237	1.062	26.97	2000	
107699	1.125	28.58	2000	
591915	1.187	30.15	2000	
545238	1.250	31.75	2000	
645583	1.312	33.32	2000	
192339	1.375	34.93	2000	
543342	1.437	36.50	2000	
558869	1.500	38.10	2000	
145134	1.562	39.67	2000	
996183	1.625	41.28	1000	
372139	1.687	42.85	1000	
243445	1.750	44.45	1000	✓
154651	1.812	46.02	1000	
620229	1.875	47.63	1000	
321122	1.937	49.20	1000	
209372	2.000	50.80	500	
490772	2.125	53.98	500	
535065	2.250	57.15	500	
371030	2.375	60.33	500	
415520	2.625	66.68	500	
402489	2.750	69.85	500	
031062	2.875	73.03	500	
271964	3.000	76.20	500	✓
570357	3.250	82.55	500	
209472	3.500	88.90	500	
877470	3.625	92.08	500	
626052	3.750	95.25	500	
664395	4.000	101.60	250	
315596	4.250	107.95	250	
209572	4.500	114.30	250	
460319	4.750	120.65	250	
225186	5.000	127.00	250	
673592	5.250	133.35	250	
317054	5.500	139.70	250	
599398	5.750	146.05	250	
958042	6.000	152.40	250	
316854	6.500	165.10	250	

Protect your product's finish from scratching or chipping by using our Protective Film Tape during shipment or assembly. A low cost alternative for protecting large surface areas and minimizing returns.

Available in discs and squares or die cut to your specifications. Custom Die Cuts are a simple solution to many of those odd shaped parts. Custom shapes can typically be made in a week with tooling costs ranging from \$200 to \$400. Tabs can be added for easy removal.



Available in Crepe, Polyester, Kapton, Lead Foil, Aluminum Foil, Glass Cloth.

### Film Tape - Discs

Part Number	Diameter		Pieces Per Roll
	In.	mm	
522138	1	25.4	500
361523	2	50.8	250
325194	3	76.2	150
615035	4	101.6	100
679378	5	127.0	100
769042	6	152.4	50
283996	7	177.8	50
442972	8	203.2	50
999918	9	228.6	50
950581	10	254.0	50
891235	11	279.4	50

### Film Tape - Squares

Part Number	Size		Pieces Per Roll
	In.	mm	
704932	1 x 1	25.4 x 25.4	500
381928	2 x 2	50.8 x 50.8	250
989022	3 x 3	76.2 x 76.2	150
593623	4 x 4	101.6 x 101.6	100
486179	5 x 5	127.0 x 127.0	100
464633	6 x 6	152.4 x 152.4	50
978660	7 x 7	177.8 x 177.8	50
589405	8 x 8	203.2 x 203.2	50
342740	9 x 9	228.6 x 228.6	50
735930	10 x 10	254.0 x 254.0	50
635186	11 x 11	279.4 x 279.4	50

## Tapes

### (A) Hi-Temp Crepe Tape

Recommended for most painting processes, will withstand temperatures up to 325°F (163°C). Provides good line definition and removes easily.

### (B) 2 Mil Green Polyester Tape

The industry standard for most powder coating and E-coating applications. This tape has a 1.5 mil silicone adhesive and will withstand temperatures up to 400°F (204°C).

### (C) 1 Mil Polyimide Kapton™ Tape

Recommended for applications requiring extremely high heat resistance including high temperature powder coating and the masking of printed circuit boards. This tape has a 1.5 mil silicone adhesive and can withstand temperatures up to 500°F (260°C).

### (D) Silicone Tape

This non-adhesive, self-fusing tape withstands temperatures up to 500°F (260°C). This tape maintains a high tracking resistance because it employs no adhesive coating, offering a non-contaminating surface. Silicone tape is a chemically cross linked tape that fuses to itself instantly and forms a permanent mass within 24 hours.



Ideal for protecting or masking irregular shapes, Stockcap tapes come in a variety of materials for almost any process.

### (A) Hi-Temp Crepe Tape

Part Number	Width		Length	
	In.	mm	Yards	Meters
394375	0.236	6	60	55.00
422149	0.472	12	60	55.00
561756	0.709	18	60	55.00
467310	0.945	24	60	55.00
851305	1.417	36	60	55.00
965762	1.890	48	60	55.00

### (B) Green Polyester Tape

Part Number	Width		Length	
	In.	mm	Yards	Meters
652964	0.125	3.18	72	65.84
630587	0.250	6.35	72	65.84
692175	0.312	7.92	72	65.84
104564	0.375	9.53	72	65.84
733642	0.500	12.70	72	65.84
217218	0.625	15.88	72	65.84
673795	0.750	19.05	72	65.84
986474	1.000	25.40	72	65.84
225511	1.500	38.10	72	65.84
665420	2.000	50.80	72	65.84
425603	3.000	76.20	72	65.84
021363	4.000	101.60	72	65.84
899244	5.000	127.00	72	65.84
147208	6.000	152.40	72	65.84

### (C) Kapton™ Tape

Part Number	Width		Length	
	In.	mm	Yards	Meters
090037	0.125	3.18	36	32.92
974678	0.250	6.35	36	32.92
845075	0.312	7.92	36	32.92
503013	0.375	9.53	36	32.92
975400	0.500	12.70	36	32.92
804754	0.625	15.88	36	32.92
553310	0.750	19.05	36	32.92
196025	1.000	25.40	36	32.92
329342	1.500	38.10	36	32.92
489592	2.000	50.80	36	32.92
298746	3.000	76.20	36	32.92
535025	4.000	101.60	36	32.92
165556	5.000	127.00	36	32.92
859933	6.000	152.40	36	32.92

### (D) Silicone Tape

Part Number	Width		Length		Color
	In.	mm	Yards	Meters	
036389	1	25.4	12	10.97	Red
882034	1	25.4	12	10.97	Black



Cut to any desired length to suit your application.



# Silicone Tubing and Sleeves

Silicone Tubing and Sleeves are ideal for covering long bolts, tubes, or pins where conventional silicone caps are too short. Tubing can be cut to your desired length with no tooling charges. These sleeves often represent an inexpensive alternative to investing in the molds needed to make a traditional cap.

## Silicone Tubing and Sleeves

Part Number	Inside Diameter		Length		Wall Thickness		Ready to Ship
	In.	mm	Feet	Meters	In.	mm	
398591	0.040	1.02	100	30.48	0.062	1.57	✓
754271	0.062	1.57	100	30.48	0.062	1.57	✓
764763	0.080	2.03	100	30.48	0.062	1.57	✓
621910	0.093	2.36	100	30.48	0.062	1.57	✓
246447	0.109	2.77	100	30.48	0.062	1.57	✓
899888	0.125	3.18	100	30.48	0.062	1.57	✓
123259	0.140	3.56	100	30.48	0.062	1.57	✓
603149	0.156	3.96	100	30.48	0.062	1.57	✓
503390	0.172	4.37	100	30.48	0.062	1.57	✓
527756	0.187	4.75	100	30.48	0.062	1.57	✓
044684	0.203	5.16	100	30.48	0.062	1.57	✓
964624	0.218	5.54	100	30.48	0.062	1.57	✓
969828	0.234	5.94	100	30.48	0.062	1.57	✓
402546	0.250	6.35	100	30.48	0.062	1.57	✓
701478	0.281	7.14	100	30.48	0.062	1.57	✓
176420	0.312	7.92	100	30.48	0.062	1.57	✓
912682	0.343	8.71	100	30.48	0.062	1.57	✓
574941	0.375	9.53	100	30.48	0.062	1.57	✓
829873	0.406	10.31	100	30.48	0.062	1.57	✓
331389	0.437	11.10	100	30.48	0.062	1.57	✓
589474	0.500	12.70	100	30.48	0.062	1.57	✓
153491	0.625	15.88	50	15.24	0.062	1.57	✓
566124	0.750	19.05	50	15.24	0.062	1.57	✓
906823	0.875	22.23	50	15.24	0.062	1.57	✓
517131	0.937	23.80	50	15.24	0.062	1.57	✓
547728	1.000	25.40	50	15.24	0.062	1.57	✓
571353	1.125	28.58	50	15.24	0.062	1.57	✓
830383	1.250	31.75	50	15.24	0.062	1.57	✓
683464	1.375	34.93	50	15.24	0.062	1.57	✓
023542	1.500	38.10	50	15.24	0.062	1.57	✓
820733	1.625	41.28	50	15.24	0.062	1.57	✓
613328	1.750	44.45	50	15.24	0.062	1.57	✓
959592	1.875	47.63	50	15.24	0.062	1.57	✓
594234	2.000	50.80	50	15.24	0.062	1.57	✓

### Product Features

- Resists temperatures up to 600°F (316°C)
- Will not contaminate a paint line

### Applications

- Powder coating
- E-coating
- Paint Masks - wet paint



**UNITED STATES**

Sinclair & Rush, Inc.  
123 Manufacturers Drive  
Arnold, MO 63010  
Tel: 636-282-6800  
Fax: 636-282-6888  
e-mail: stockcap@stockcap.com

**ENGLAND**

Sinclair & Rush, Ltd.  
Units 11-13 Spectrum West  
20/20 Maidstone Business Estate  
Maidstone Kent ME 16 0LL  
Tel: 44-1622-693200  
Fax: 44-1622-693201  
e-mail: sales@sinclair-rush.co.uk

**AUSTRALIA**

Sinclair & Rush, Pty. Ltd.  
51 Wellington Street  
Riverstone 2765 NSW Sydney  
Tel: 61-2-9627-3211  
Fax: 61-2-9627-5156  
Toll Free: 1-800-00-3211  
e-mail: info@sinclair-rush.com.au

**MEXICO**

Sinclair & Rush  
Costa Brava #35648  
Col. Primavera  
Monterrey, N.L. Mexico CP 64830  
Tel: 52 (81) 8030-4787  
Sin Costo: 01 (800) 021-8272  
Fax: 52 (81) 8030-4796  
e-mail: ventas@sinclair-rush.com-mx

**SPAIN**

Sinclair & Rush Espana SL  
Alberto Alcocer, 24 - 5o  
28036 Madrid  
Tel: +34 91 458 36 49  
Fax: +34 91 344 04 76  
e-mail: pnavarro@sinclair-rush-es.com

**GERMANY**

Sinclair & Rush GmbH  
Viersener Str. 3  
D-47929 Grefrath  
Germany  
Tel: 49 2158 69240  
Fax: 49 2158 692410  
e-mail: stockcap@t-online.de

**STOCKCAP**  
A Sinclair & Rush Company

**1-800-827-CAPS (2277)**  
**WWW.STOCKCAP.COM**